

SW105 | SW115

**SANY**

Quality Changes the World



# THE RELIABLE ALL-ROUNDER

COMPACT, EFFICIENT AND PRECISE.

CONSTRUCTION MACHINERY



**COMPACT WHEEL LOADER**  
**SW105 | SW115**

Engine  
YANMAR 4TNV98C  
DEUTZ TD 2.9 L4  
Rated power  
51.7 kW / 2500 rpm  
55.4 kW / 2600 rpm  
Full load bucket capacity  
1.0 m<sup>3</sup> / 1.1 m<sup>3</sup>  
Operating mass  
5400 / 5800 kg



# SANY

**By your side throughout Europe,  
for sales, service and maintenance**

SANY Europe is part of the SANY Group, a globally active manufacturer of construction machinery, harbour equipment and wind turbines. Our wide range of powerful hydraulic excavators and wheel loaders has been specially developed for the European market and is distinguished by its efficient and reliable performance and its safe, straightforward and comfortable operation. It is a matter of course for us that all EU regulations and standards are adhered to, and that we fulfil our own stringent quality requirements. In addition to the latest technology and meticulous machining, these include comprehensive sales, service and maintenance support through our Europe-wide dealer network.

**125 000 m<sup>2</sup>**  
FACTORY PREMISES

**> 100**  
DEALERS IN EUROPE

**5 YEARS'**  
WARRANTY\*

**MOVING MORE**

\* Optionally available



**SW105 | SW115**

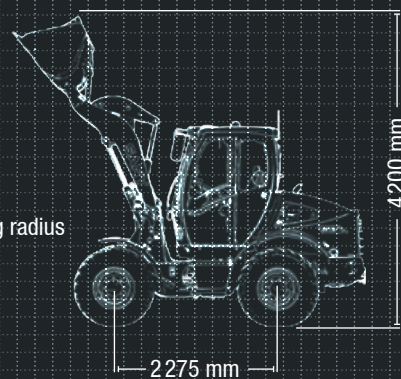
## SW115 HARD FACTS

Transport height  
2760 mm

Transport length  
5295 mm

Inner tyres turning radius  
2585 mm

Max. speed  
40 km/h



## BETTER PERFORMANCE, GREATER VERSATILITY, MORE PRODUCTIVITY

The SANY SW105/SW115 compact wheel loaders are consistently at the service of their customers. They combine maximum performance with exemplary versatility and impressive cost-effectiveness. Whether on a typical construction site working on structural and civil engineering tasks, in the

building materials trade, in agriculture and forestry or in goods handling – with its compact dimensions and high travel and working speeds, they are true workhorses and impress with their high levels of user and driving comfort, as well as with their outstanding basic equipment.







USER EXPERIENCE

**Comfortable working atmosphere**

Wide, safe entry, comfortable suspended seat – even just your first impression will be enough to convince you that the cockpit is entirely tailored to the comfort and work ergonomics of the driver. A clear view of all important information – the instruments in the cockpit feature a generously sized and intuitive display. The powerful heating and ventilation and individually adjustable steering column complete the standard features of the cab. The SW105 also stands out thanks to its eye-catching interior design.



USER EXPERIENCE

**Everything within reach**

Placing heavy loads within a centimetre's accuracy? This is no problem with the particularly sensitive joystick with driving direction rocker switch and speed level selector switch. This allows the machine to be controlled effortlessly with extreme precision. The 3. hydraulic function integrated as standard can also be controlled using the joystick. This is perfect for opening and closing a dump bucket, for example. The brake pedal with integrated inch function also gives the operator the opportunity to simply redirect the full engine power to the operating hydraulics.

ECONOMY

**Equipment that saves costs as standard**

The powerful 4-cylinder diesel engine impresses not only with its low fuel consumption but also in terms of exhaust gas emissions. It holds back and complies with the stipulated levels of the currently applicable stage V, even without the addition of AdBlue. The electronically controlled 2 stage fan can be adapted to the relevant working situation. This also saves fuel and reduces noise generation. The large one-piece hood allows easy access for maintenance and service. The electronics are built in such a way that they are particularly well-protected from dust and environmental effects.



**MACHINING**

**When it matters most** – only top-quality components are machined for the SW105/ SW115 SANY compact wheel loaders. The heavy-duty components used are ideal for tough use on the construction site.

**DIMENSIONS**

**Stability as a foundation** – together with the low-lying centre of gravity, the specially developed rear oscillating axle ensures the machine retains the highest level of stability, even on uneven ground.

**USER EXPERIENCE**

**Sensitive right down to the details** – the joystick with driving direction rocker switch and speed level selector switch, as well as the 3. hydraulic function controls, allow for particularly precise and versatile handling of the machine.



**SAFETY**

**Maximum safety** – the large windows with their downwards-sloping window lines and the compact dimensions give the driver outstanding visibility on all sides, ensuring maximum safety during operation.

**COMPONENTS**

**Reliability is our trump card** – we only use well-known and reliable components, such as powerful Yanmar/Deutz engines or tried-and-tested Bosch, Rexroth and Casappa hydraulics.

**ECONOMY**

**Top values** – the Yanmar/Deutz 4-cylinder diesel engine provides high power and torque even at low speeds, ensuring low fuel consumption.

**The added benefits SANY offers you:**



- + Particularly agile compact loader
- + Comfortable driver's cab
- + Oscillating axle for greater stability
- + High travel speed
- + Sophisticated concept
- + High safety standards
- + Extensive standard features



**Absolute reliability – for peace of mind!**

SANY's five-year warranty\* gives you the assurance that you can fully count on your equipment.

\* Optionally available



DIMENSIONS

**Maximum traction and manoeuvrability**

It's a familiar scene – on the construction site, at an outside warehouse or a bulk storage space; when you need to use your wheel loader, there is often little space for manoeuvring and working. It's a good thing that the SW105/SW115 compact wheel loaders, with their 80° articulated joint, can be steered with particular precision and only need little space thanks to their compact design. The oscillating axle (rear) ensures maximum stability when travelling both along the road and on uneven terrain.



COMPONENTS

**Only the best of everything**

No-skive hydraulic hoses provide the required safety for the delicate components. Other than this, we only use components from the heavy duty line, in order to guarantee long-term operational safety. The generously sized radiator ensures that even performance-intensive attachment devices are no problem at all for the machine. The hydraulic system is equipped with a standard float position of the lifting gear, which opens up additional possible applications. In this way, surfaces can be made level, or attachment devices such as sweepers or snow ploughs can be operated without any further modification.



SAFETY

**Stable in every situation**

With a full load bucket capacity of 1.0/1.1 m³, the SANY SW105/SW115 are particularly well suited to tough tasks. It goes without saying that they must be able to safely and frequently handle heavy loads while travelling on any type of terrain. The low centre of gravity, the engine built lengthways and the oscillating axle (rear) ensures the necessary road grip. The clearly visible level indicator also helps when loading; this ensures that the bucket is guided precisely above the ground.

**IDEAL  
FOR  
EVERY USE**



**SW105**

**SW115**

SAFETY

**Work safely and productively at all times**

The large windows and deeply drawn window lines give the operator an optimum view at all times. The optional electrically actuated safety valves provide not only comfort when switching to the float position, but also increased safety when loading. The LED reversing lights (SW105), working lights, beacon lamp and secure loops for fixing during transport also contribute to increasing safety.



**Compact and versatile**

Both machines impress with compact dimensions and a high degree of stability and tilt resistance. Both machines boast comprehensive standard features (float position; front electric kit; 3. circuit etc.). There are differences, among others, in the cab interiors, the joystick, the performance data and the additional options.



**Better equipped – more versatility**

In comparison to its smaller brother, the SW115 also boasts a few additional features. Aside from the automatic stage adjustment, it also allows higher travel speeds, has a more finely graduated gear box and features a hydraulically pilot-controlled joystick, which ensures maximum user comfort. A hand-throttle is also part of the standard features; this makes it possible to operate attachment devices with a constant oil flow.

- + 40 km/h
- + 2 speed levels – 2 gears
- + Parking brake electrically & automatically operated
- + Pilot controlled joysticks
- + High lifting capacities



ENGINE	SW105	SW115
Model	YANMAR 4TNV98C	DEUTZ TD 2.9 L4
Type	4 cylinders with indirect injection and water cooling	4 cylinders with indirect injection, turbocharged and water cooling
Emission	Stage V*	Stage V
Rated power ISO/TR 14396	51.7 kW/2500 rpm	55.4 kW/2600 rpm
Displacement	3319 ccm	2925 ccm
Exhaust Treatment	AGR / DPF	DPF

ELECTRICS	SW105	SW115
Battery	1 × 12 V / 110 Ah	1 × 12 V / 110 Ah
Alternator (capacity)	80 A	95 A
Protection class	IP 67	IP 67

TRANSMISSION	SW105	SW115
Transmission type	Hydrostatic	Hydrostatic
Performance regulation	Automatic	Automatic
Gears/stages	0 / 2	2 / 2
Forwards/backwards	Lever with electr. switch / Lever	Lever with electr. switch / Lever
Max. travel speed slow	0–7 km/h	0–4 / 0–11 km/h
Max. travel speed high	0–20 km/h (0–30 km/h opt.)	0–15 / 0–20 km/h (0–40 km/h opt.)
Stage adjustment	-	Automatic

HYDRAULIC SYSTEM	SW105	SW115
Main pump	Gear pump	Gear pump
Max. oil flow	70 l/min	90 l/min
Relief valve (working hydraulic)	230 bar	230 bar
Relief valve (steering)	190 bar	190 bar

SERVICE FILLING QUANTITIES	SW105	SW115
Fuel tank	75 l	75 l
Engine oil	11 l	8 l
Front axle	5.6 l	5.2 l
Rear axle	5.8 l	6.2 l
Gear box	3.8 l	1.8 l
Hydraulic system	70 l	70 l
Brake system	2 l	1.1 l
Engine coolant	15 l	15 l

OPERATING MASS	SW105	SW115
Operating mass	5400 kg	5800 kg
Max. permissible mass	6200 kg	6270 kg

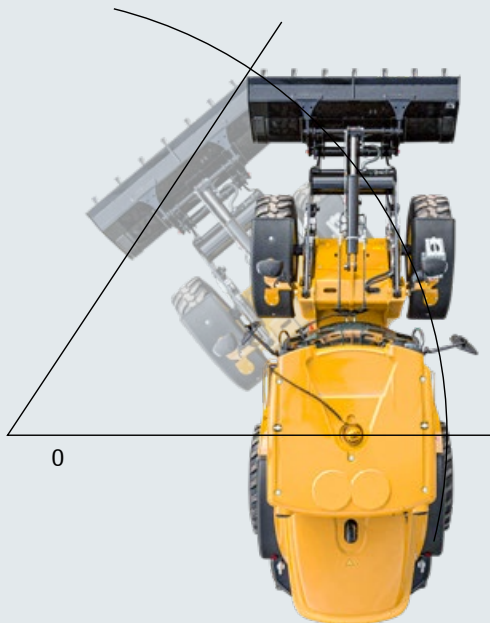
\* from Q2 - 2021

STEERING	SW105	SW115
Kind of steering	Articulated	Articulated
Total steering angle	80°	80°
Inner tyres turning radius	2585 mm	2585 mm
Outer tyres turning radius	4515 mm	4515 mm
Outer bucket turning radius	4980 mm	4980 mm

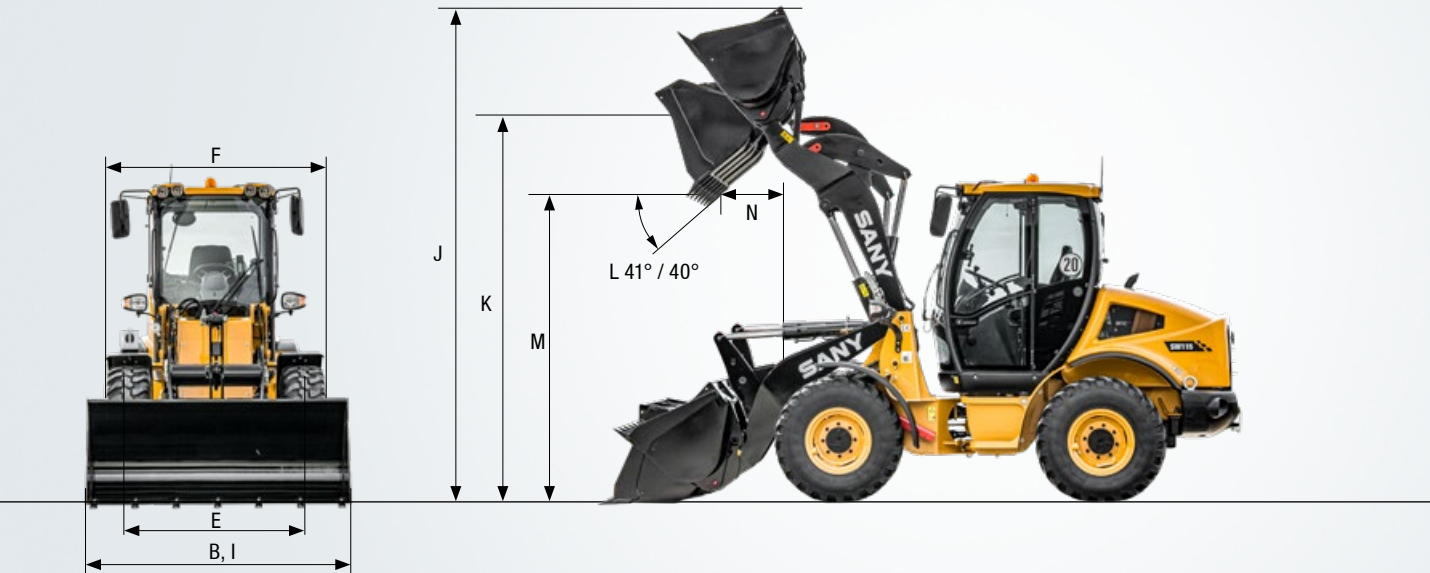
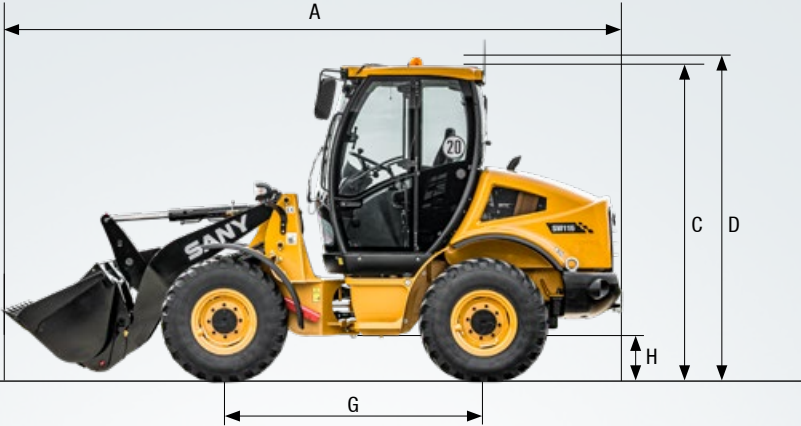
TYRES	SW105	SW115
Dimensions	16/70 x 20	405/70 R20

BRAKES	SW105	SW115
Service brake	Hydraulic multi-disc oil brake on front axle working on all wheels	Hydraulic multi-disc oil brake on front axle working on all wheels
Parking brake	mechanical operating on service brake, manually activated	mechanical operating on service brake, manually activated

AXLES	SW105	SW115
Type	Heavy duty; planetary drive on every wheel; oscillating axle (rear)	Heavy duty; planetary drive on every wheel; oscillating axle (rear)
Angle of oscillation	25°	25°
Differential	Self locking differential on front axle	Self locking differential on front axle



DIMENSIONS	SW105	SW115
A Transport length (transport position)	5270 mm	5295 mm
B Transport width	2000 mm	2100 mm
C Transport height	2760 mm	2760 mm
D Transport height with beacon lamp	2960 mm	2860 mm
E Tyre width	1530 mm	1530 mm
F Transport width (tyres)	1873 mm	1937 mm
G Wheel base	2275 mm	2275 mm
H Ground clearance	330 mm	330 mm



ATTACHMENTS	SW105	SW115	SW105	SW115	SW105	SW115	SW105	SW115
	Universal bucket		4 in 1 bucket		Lightweight bucket		Fork	
Bucket weight	1 m³	1.1 m³	0.9 m³	0.9 m³	1.5 m³	1.5 m³	-	-
I Bucket width	2000 mm	2100 mm	2100 mm	2100 mm	2250 mm	2250 mm	-	-
J Max. height	4100 mm	4200 mm	4050 mm	4145 mm	4155 mm	4250 mm	-	-
K Heights to hinge point	3260 mm	3360 mm	3260 mm	3360 mm	3260 mm	3360 mm	-	-
L Dump angle	41°	40°	41°	40°	41°	40°	-	-
M Dump height	2550 mm	2685 mm	2525 mm	2659 mm	2500 mm	2634 mm	-	-
N Reach fully raised	675 mm	660 mm	650 mm	635 mm	725 mm	710 mm	-	-
O External bucket turning radius	4980 mm	4980 mm	4940 mm	4940 mm	5090 mm	5090 mm	-	-
Full load bucket capacity (SAE)	350 kg	400 kg	500 kg	500 kg	500 kg	500 kg	-	-
Bucket static tipping load, straight	4600 kg	4950 kg	4800 kg	5150 kg	4350 kg	4700 kg	-	-
Bucket static tipping load, full turned	4200 kg	4400 kg	4400 kg	4600 kg	4000 kg	4150 kg	-	-
Breakout force	5600 kg	6400 kg	6100 kg	6890 kg	5200 kg	6010 kg	-	-
Transport length incl. attachment	5270 mm	5295 mm	5220 mm	5425 mm	5320 mm	5525 mm	-	-
Forks length	-	-	-	-	-	-	1200 mm	1200 mm
Max. loading height (fork or quick-hitch)	-	-	-	-	-	-	3050 mm	3150 mm
Max. dumping distance (fork or quick-hitch)	-	-	-	-	-	-	1200 mm	1350 mm
Forks static tipping load full turned	-	-	-	-	-	-	3200 kg	3400 kg
Forks payload EN 474 (80%)	-	-	-	-	-	-	2560 kg	2720 kg
Forks payload EN 474 (60%)	-	-	-	-	-	-	1920 kg	2040 kg



Versatile as standard

The compact SANY machines are already optimally equipped for versatile use as standard. Optional extra equipment makes them even more flexible, for example a variety of attachment devices, hydraulic kits for oil circulation, stronger batteries or air-conditioning.



COMFORT / CABIN

Heating	●	●
Armrest right & left	●	●
12 V socket	●	●
Window wiper	●	●
Washer for window wiper	●	●
Mechanical joystick	●	
Pilot pressure Joystick		●
Additional hydraulic circuit on joystick	●	●
Windows openable by 180°	●	●
Windows gap opening	●	●
Rear mirror foldable	●	●
Joystick with travel direction	●	●
Hand-throttle		●
Mechan. suspension seat	●	●
Prepared for radio	●	●
Air suspension seat	opt.	opt.
Airconditioning	opt.	opt.
Heated mirrors	opt.	opt.

TRAVELMOTOR/AXLES

2 stage hydrostatic transmission	●	●
2 gears		●
Parking brake		●
Oscillating axle (rear)	●	●
Self locking differential on front axle	●	●
Inch/brake pedal	●	●
Fast travel option	opt.	opt.

● SW105   ● SW115

The standard and special options differ depending on the country to which the mini excavator is delivered. If you have any questions, please contact your dealer directly.

WORKING EQUIPMENT

3. hydr. circuit	●	●
Front electrics kit	●	●
Bucket level indication	●	●
Different types of quick-hitches	opt.	opt.
Different attachments	opt.	opt.

LIGHTS

Lights for road travel	●	●
Working lights (front)	●	●
Working lights (rear)	●	●

MAINTENANCE/TRANSMISSION

Hood suspended by gas-spring	●	●
2 stage fan	●	●
Stronger battery	opt.	opt.

SAFETY

Safety valves (electr. actuated)	opt.	opt.
Reverse travel alarm	●	●
Beacon lamp	●	●
Battery master switch	●	●
Safety valves	●	●
LED rearlights	●	
ROPS/FOPS certificate	●	●
Homologation	opt.	opt.

A SERVICE YOU CAN RELY ON

Just as we do with our excavators, we demand high quality and reliability of our service products. This underlines our equipment's performance in terms of their durability and their excellent price-performance ratio. After all, maintenance is

crucial for efficiency, cost-effectiveness and safety. Your SANY dealer is happy to help you with a comprehensive range of services to ensure that your machine continues operating efficiently in the long term.

SANY – flexible, fast and always there for you

Rapid assistance, tailored advice and a reliable supply of original parts – that is what we mean by a premium service.



The added benefits SANY offers you:

- ✚ Fast supply thanks to the central warehouse near Cologne
- ✚ More than 15 000 spare parts for high machine reliability
- ✚ Expert knowledge for optimal supply for your machine
- ✚ Thanks to SANY's special training programme, our dealers are always kept up-to-date so that they can face all technical challenges.

Parts supply – fast and reliable

By purchasing a SANY compact wheel loader, you have invested in the future. Fast availability of spare parts is your guarantee of minimal downtimes and failure times.



Detailed information in black and white

Handbooks and documents are available for all SANY compact wheel loaders; these can help you with operation, maintenance, servicing and repairs. These include operating and maintenance instructions and technical specifications.





# TWO MACHINES THAT CAN PERFORM

There is hardly any other construction machine that can be used for so many different tasks as a wheel loader. The SW105/SW115 SANY wheel loaders stand out for their exemplary versatility. The best conditions for maximum productivity. Their optimal balance of power and weight makes them particularly efficient, and the extensive standard features provided ex works emphasise increase their flexibility and add numerous possible applications.



### POWERFUL

No compromises when it comes to reliability and durability. Our exclusive use of heavy-duty components ensures that the wheel loaders can hold their own during their tough day-to-day work.

### STABILITY AS A FOUNDATION

The clever weight distribution, thanks to the engine placement (40/60), the low-lying centre of gravity and the oscillating axle for a low centre of gravity shift ensure the machine maintains its high level of stability in every situation.

### SENSITIVE RIGHT DOWN TO THE DETAILS

The compact wheel loader can be controlled quickly and precisely using the joystick. Operators can have all the important vehicle functions to hand with just one instrument – and have everything they need at a glance with the clear display elements.

### MAXIMUM SAFETY

In order to protect people and machines optimally during daily operations, outstanding safety components are essential. This includes, among other things, electrically actuated safety valves, no-skive hydraulic hoses, a clearly visible level indicator, marked lashing points, a reverse travel alarm and a beacon lamp.

### RELIABILITY IS OUR TRUMP CARD

Outstanding performance and tried-and-tested, durable technology. All built-in components are designed for tough everyday use on the construction site.

### TOP VALUES

The high-torque 4-cylinder diesel engine was developed for demanding applications and provides a high torque even in the low speed range – both this and the travel motor as a high pressure system saves fuel. You can also save AdBlue with this low-emission engine – it complies with emission values set by the emission standards, even without the use of AdBlue.

### TECHNICAL HIGHLIGHTS (SW115)

Engine	DEUTZ TD 2.9 L4
Rated power (ISO/TR14396)	55.4 kW / 2600 rpm
Max. travel speed	40 km/h
Inner tyres turning radius	2585 mm
Bucket static tipping load, straight	4950 kg
Max. oil flow	90 l/min



**"A GREAT MACHINE PROVIDING  
IMPRESSIVE STABILITY"**

David Bower (Head greenkeeper) – Golfclub Erftaue e.V.

Not all products are available in all markets. As part of our continuous improvement process, we reserve the right to modify specifications and designs without giving prior notice. The figures may contain additional options.

# SANY

Quality Changes the World

#### SANY EUROPE GmbH

Sany Allee 1  
D-50181 Bedburg  
fon +49 2272 90531 100  
fax +49 2272 90531 109  
info@sanyeurope.com  
www.sanyeurope.com