

SRSC45E5

SANY

Quality Changes the World



FULL OF HIGH VOLTAGE

HIGHER, FURTHER, MORE EFFICIENT – NOW ALSO FULLY ELECTRIC



REACH STACKER

SRSC45E5

Battery capacity
422 kWh

Load capacities at row 1 / 2 / 3
45 / 31 / 15 t

Wheel base
6000 mm

Axle
Kessler

FULL ELECTRIC REACH STACKER

- ✦ High efficiency and low consumption
- ✦ Cost savings in continuous operation
- ✦ Fast charging with dual gun charging
- ✦ Field experience with more than 400 Reach Stackers and Empty Container Handlers

Travel speed max.
20 km/h
Overall weight
73 000 kg
Overall width
6 042 – 12 175 mm
Turning radius min.
8 100 mm



BATTERY

Type	Lithium iron phosphate
Capacity	422 kWh
Warranty period	The attenuation in 5 years shall not exceed 30%
Full discharge cycle	> 2800
Cooling mode	liquid
Continuous working time	6–8 h

CHARGER

Charging duration	1–1.5 h
Charging power	300 kW

ELECTRIC MOTORS

Travel motor power rated/peak	157 / 310 kW
Lift motor power rated/peak	160 / 270 kW

DRIVE AXLE

Drive axle type	Kessler D102
-----------------	--------------

BOOM

Lifting height max. (SANY Spreader)	15 100 mm
Lifting height min. (SANY Spreader)	1 120 mm
Tilting Angle	0–60°

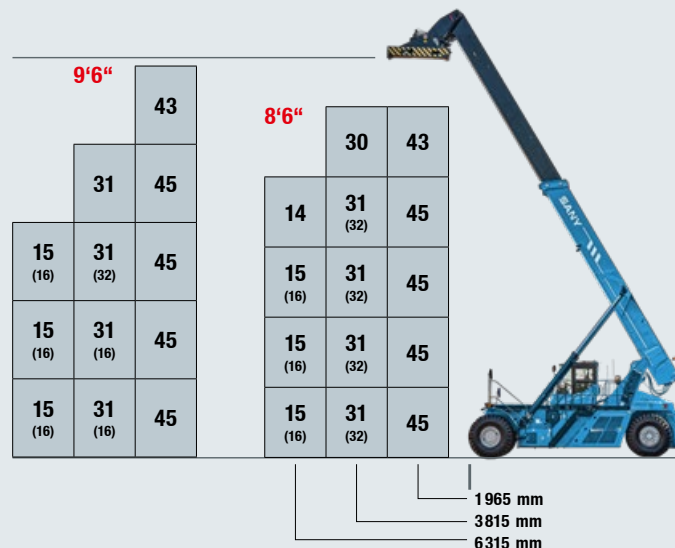
TYRE

Tyre size	18.00-25
-----------	----------

SPREADER SANY

Manufacturer	SANY
Model	SDJ450H
Side shift	+/- 800 mm
Rotation angle	+105° / -195°
Mechanical pile slope (slope compensation)	-2° / +2°
Spreader weight (TW)	7 200 kg
Application	Top Lift

LOAD CHART



Not all products are available in all markets. As part of our continuous improvement process, we reserve the right to modify specifications and designs without giving prior notice. The figures may contain additional options.

SANY

Quality Changes the World

SANY EUROPE GmbH
Sany Allee 1
D-50181 Bedburg
Tel. +49 2272 90531 100
Fax +49 2272 90531 109
info@sanyeurope.com
www.sanyeurope.com