

SMHW30G5

SANY

Quality Changes the World



DEDICATION TO HANDLE MATERIAL

POWERFUL, PRECISE, EFFICIENT



MATERIAL HANDLER
SMHW30G5

Power
145 kW
Total weight
28500 – 30500 kg
Loading equipment
12 – 14 m

MATERIAL HANDLER

- + High efficiency, low consumption
- + Reinforced undercarriage stability
- + Comprehensive security features

Travel speed max. **20 km/h**
 Total weight **28500 – 30500 kg**
 Loading equipment **12 – 14 m**



ENGINE

Manufacturer	CUMMINS
Model	6.7
Engine power	145 kW / 2000 rpm
Max. torque	902 Nm
Emissions standard	EU Stage V
Displacement/number of cylinders	6.7 l / 6
Diesel fuel capacity	465 l
AdBlue fluid	50 l

CABINE

Lifting range	2600 mm
Eye level	5600 mm

GEARBOX

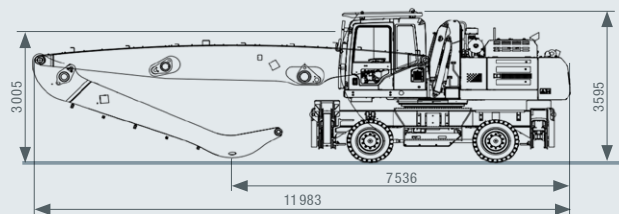
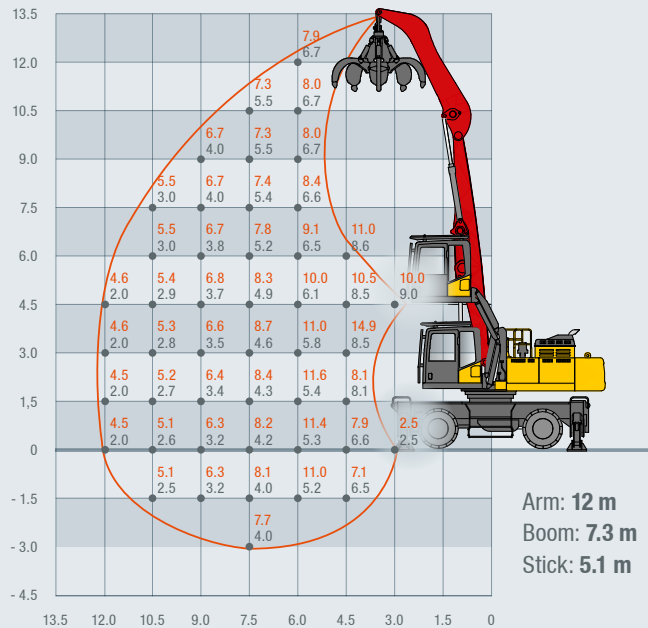
Max. travel speed	20 km/h
Climbing power	35 %
Gearbox type	Hydrostatic drive, 0–5 km/h, 0–20 km/h
Gearbox model	DANA 360
Axles	KESSLER
Steering type	Front-wheel steering
Tires	10.00-20 solid rubber

HYDRAULIC SYSTEM

Hydraulic pressure	320 bar
Max. oil flow	2x 260 l
Filling quantity of the hyd. system	230 l

LOADING EQUIPMENT

Arm	Boom	Stick
12 m	7.3 m	5.1 m
14 m	8.6 m	5.6 m



Not all products are available in all markets. As part of our continuous improvement process, we reserve the right to modify specifications and designs without giving prior notice. The figures may contain additional options.

SANY

Quality Changes the World