

SMHW48G5

SANY

Quality Changes the World



POWERFUL MATERIAL HANDLING SOLUTION

HIGH CAPACITY –
FLEXIBLE LOADING
EQUIPMENT



MATERIAL HANDLER
SMHW48G5

Power
252 kW
Total weight
44 000 – 48 000 kg
Loading equipment
16.1 – 18 m

EQUIPMENT **SMHW48G5**

MATERIAL HANDLER

- + High efficiency, low consumption
- + Reinforced undercarriage stability
- + Comprehensive security features

Travel speed max.
20 km/h
Total weight
44 000 – 48 000 kg
Loading equipment
16.1 – 18 m



ENGINE

Manufacturer	CUMMINS
Model	L9
Engine power	252 kW / 1 800 rpm
Max. torque	1 526 Nm
Emissions standard	EU Stage V
Displacement/number of cylinders	9.0 l / 6
Diesel fuel capacity	540 l
AdBlue fluid	80 l

CABINE

Lifting range	2650 mm
Eye level	6120 mm

GEARBOX

Travel speed max.	20 km/h
Climbing power	35 %
Gearbox type	Hydrostatic drive, 0–5 km/h, 0–20 km/h
Gearbox model	DANA 360
Axles	Meritor (CUMMINS)
Steering type	Front-wheel steering
Tires	12.00-24 solid rubber

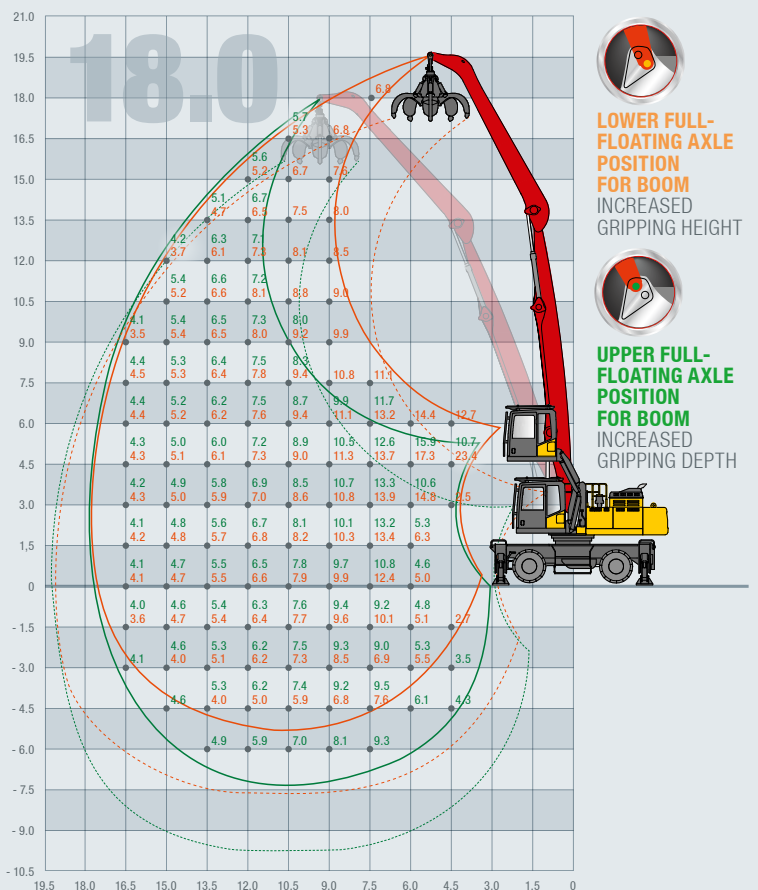
HYDRAULIC SYSTEM

Hydraulic pressure	340 bar
Max. oil flow	1x 696 l
Filling quantity of the hyd. system	340 l

Not all products are available in all markets. As part of our continuous improvement process, we reserve the right to modify specifications and designs without giving prior notice. The figures may contain additional options.

LOADING EQUIPMENT

Arm	Boom	Stick
16.1 m	8.6 m	7.5 m
17.1 m	9.6 m	7.5 m
18 m	10.5 m	7.5 m



SANY

Quality Changes the World

SANY EUROPE GmbH

Sany Allee 1
D-50181 Bedburg
Tel. +49 2272 90531 100
Fax +49 2272 90531 109
info@sanyeurope.com
www.sanyeurope.com