

STH625E



SANY

Quality Changes the World

MORE FEATURES, MORE POSSIBILITIES

PERFORMANCE AND EFFICIENCY
ON THE HIGHEST LEVEL

Compact, efficient, high-powered and fully electrical telehandler. The STH625E delivers less noise, less vibration and less pollution. Compact dimension, is perfect for working indoors or in other enclosed spaces urban or construction.

FULL ELECTRIC COMPACT TELEHANDLER STH625E

Operating mass
5,000 kg
Battery size
34 kWh
Hydraulic power
32 kW
Working hours
8

PROVEN TECHNOLOGY, NEW ENERGY

MAIN FEATURES

| | | | | | | | |
|----------------|----------|-----------------|---------------|------------------|---------|----------------|----------|
| Lifting height | 6 meters | Battery voltage | 347 V / 96 AH | Travelling speed | 20 kph | Turning radius | 3300 mm |
| Overall width | 1850 mm | Driving power | 32 kW | Height over cab | 1920 mm | Capacity | 2,500 kg |

OPERATING COMFORT/CAB

| |
|--|
| 10-inch touchscreen display and encoder navigation |
| Heater and air conditioning |
| Radio with Bluetooth and microphone |
| Adjustable seat with suspension |
| 12 V power socket |
| Sunblind, roof and front screen |
| Heated rear screen |
| Front, roof and rear wiper and washers |
| Armrest with storage and USB charger |
| Cup and bottle holders |
| Fully adjustable steering column |
| Intuitive keypad functions (all backlit) |
| EVI Telematics |

WORKING LIGHTS

| |
|--|
| 7 x LED Working lights on cab and boom |
| Full LED road lights |
| Amber flashing beacon |

WORK EQUIPMENT

| |
|--|
| Standard Sany Fast Fit carriage with 1200 mm forks |
| Manitou carriage with fork frame (optional) |
| On board charger |
| External 3 phase fast charge: optional |
| Three steering modes: 4WS, 2WS and crab |
| Fully proportional joystick |
| Auxiliary hydraulic venting from cab |

SAFETY

| |
|---|
| CE / UKCA-certified |
| ROPS ISO:3471:2008 and FOPS ISO:3449:2005 |
| Screen and roof guard (optional) |
| Reversing alarm |
| Hi-viz seatbelt |
| Integrated reversing camera and distance sensor |
| Seat switch and green „ready“ beacon |
| Load weight monitoring |
| Load moment Indicator display |



Absolute reliability – for peace of mind!

SANY's telehandler comes with 3 years, 3,000 hrs warranty* gives you the assurance that you can fully count on you equipment.

STH265e CATL battery comes with 5 years or 10,000 hrs warranty period.

* With participating partners

CHARGE ANYWHERE WITH ANY POWER SOCKET

SANY PREMIUM PORTABLE CHARGER –
4 SOCKET ADAPTER PLUGS – 230V / 370V AC

Electric technology

SANY's electric telehandler offers significant operational benefits:

- + No service or diesel filters to replace
- + Easy and quick battery charging
- + Low noise and vibration levels
- + Endless applications and use

Energy recovery

Regenerative braking and harnessing boom lowering forces.

SANY's E-POWER energy recovery system captures up to 15 % power ensuring the STH625e is efficient and more productive for longer.



PERFORMANCE PARAMETERS

| | | |
|---------------------------------|-------|------|
| Maximum lift capacity | kg | 2500 |
| Lift capacity at maximum height | kg | 2000 |
| Lift capacity at maximum reach | kg | 800 |
| Lift height | mm | 6000 |
| Maximum forward reach | mm | 3350 |
| Carriage crowd angle | ° | 12 |
| Carriage dump angle | ° | 117 |
| Frame levelling +/- | ° | NA |
| Outside turning radius (4WS) | mm | 3300 |
| Auxiliary hydraulic flow | l/min | 80 |
| Auxiliary hydraulic pressure | Mpa | 270 |
| Noise at driving position | Lpa | 68 |
| Noise to environment | Lwa | 76 |

BOOM PARAMETERS

| | | |
|-----------------------|-----|---------|
| Boom (raise/lower) | sec | 9.4/6.7 |
| Boom (extend/retract) | sec | 9.6/6 |

TYRES

| | |
|-----------|---------|
| Type/size | 12-16.5 |
|-----------|---------|

WORKING POWER INFORMATION

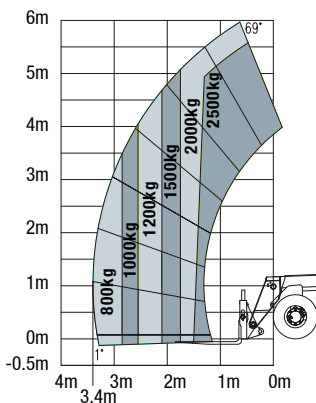
| | | |
|-------------------------|-----|------------|
| Battery nominal voltage | V | 347 / 96AH |
| Battery technology | | LFP |
| Battery energy | kWh | 34 |
| Recharge hours rapid | H | 2 |
| Recharge hours standard | H | 8 |
| Recharge voltage | V | 220/370 |
| Driving motor power | kW | 32 |

SERVICE REFILL CAPACITIES

| | | |
|------------------|-----|----|
| Hydraulic system | ltr | 70 |
|------------------|-----|----|

CABIN

Cabin is ROPS & FOPS tested & conforms to IOS 3471/3449.



TRANSMISSION

| | | |
|-------------------------|--------------------------|------------|
| Transmission type | | Electrical |
| Transmission brand | | Dana 301 |
| Transmission motor | | Inovance |
| Driving Power | kW | 32 |
| Axles | | Dana 211 |
| Number of forward gears | | 2 |
| Number of Reverse gears | | 2 |
| Max, travel speed | kph | 20 |
| Parking brake | | SAHR |
| Service brake | Oil-immersed multi-discs | |

HYDRAULIC SYSTEM

| | | |
|---------------------|-------|-----------|
| Hydraulic pump type | | Gear pump |
| Hydraulic motor | | Inovance |
| Hydraulic power | kW | 32 |
| Hydraulic Pump | | Cassapa |
| Hydraulic Manifold | | Husco |
| System pressure | bar | 270 |
| Hydraulic flow | l/min | 80 |

DIMENSIONS

| | | |
|--------------------------------|----|------|
| Length to front of carriage | mm | 4000 |
| Overall width | mm | 1850 |
| Height over cab without beacon | mm | 1920 |
| Height over cab with beacon | mm | 2010 |
| Wheelbase | mm | 2390 |
| Overall cabin width | mm | 960 |
| Ground clearance | mm | 250 |
| Turning radius over tyres | mm | 3300 |

POINT LOADS

Machine loaded with models maximum capacity

| | |
|---------------------|---------|
| Load per front tyre | 3260 kg |
| Load per rear tyre | 490 kg |

Machine unloaded with boom in horizontal travel position

| | |
|---------------------|---------|
| Load per front tyre | 1200 kg |
| Load per rear tyre | 1300 kg |

