

SANY

Quality Changes the World

SANY CRANE EUROPE

CONSISTENTLY STRONG
REMARKABLY VERSATILE



CRANE COLLECTION

SANY®



LATTICE BOOM
CRAWLER CRANE



TELESCOPIC
CRAWLER CRANE



ALL-TERRAIN CRANE



ROUGH-TERRAIN CRANE



TRUCK-MOUNTED CRANE



POWER LINX

SANY CRANE EUROPE

CONSISTENTLY STRONG
REMARKABLY VERSATILE

■ CONTENTS



LATTICE BOOM CRAWLER CRANE

SCE600A

SCE1000A

SCE1000A-EV

SCE1350A

SCE1350A-EV

SCC2000A-EV

SCE2500A

SCE2800A

SCC3200T

SCE4000A-1

SCE4800A

SCE6000A

SCE8000A

SCE12500A

SCE22000A



TELESCOPIC CRAWLER CRANE

SCE400TB

STB500T5-EV

SCE600TB

SCE800TB

SCE800TB-EV

SCE1000TB-EV

SCE1500TB

SCE1500TB-EV

SCE2500TB



**ALL-TERRAIN
CRANE**

SAC600E
SAC700E
SAC900E
SAC1200E
SAC1500E
SAC2500E



**ROUGH-TERRAIN
CRANE**

SRE450
SRE450N
SRE600
SRE900
SRE1100
SRE1300



**TRUCK-MOUNTED
CRANE**

SPC500E



POWER LINX

SPL210

LATTICE BOOM CRAWLER CRANE

COMPACT AND EFFICIENT **SCE600A**



60 t



168 kW / 1800 rpm



16.4 t



4.46 m / 4.39 m



- + Cummins engine of low fuel consumption and low noise emission, auto idling.
- + Ground bearing pressure display, auto forward steering and traveling, independent monitor.
- + Basic machine with crawlers and boom base is 3.0 m wide, satisfying global transport standard.
- + Ø22 mm hoist wire rope with strong line pull, optional main and aux. freefall available.

ENGINE

Cummins

MAIN PUMP

Kawasaki

MAIN VALVE

Kawasaki

REDUCER

Rexroth / O&K

H

Max. lifting capacity: 60 t

Max. lifting moment: 222 t·m

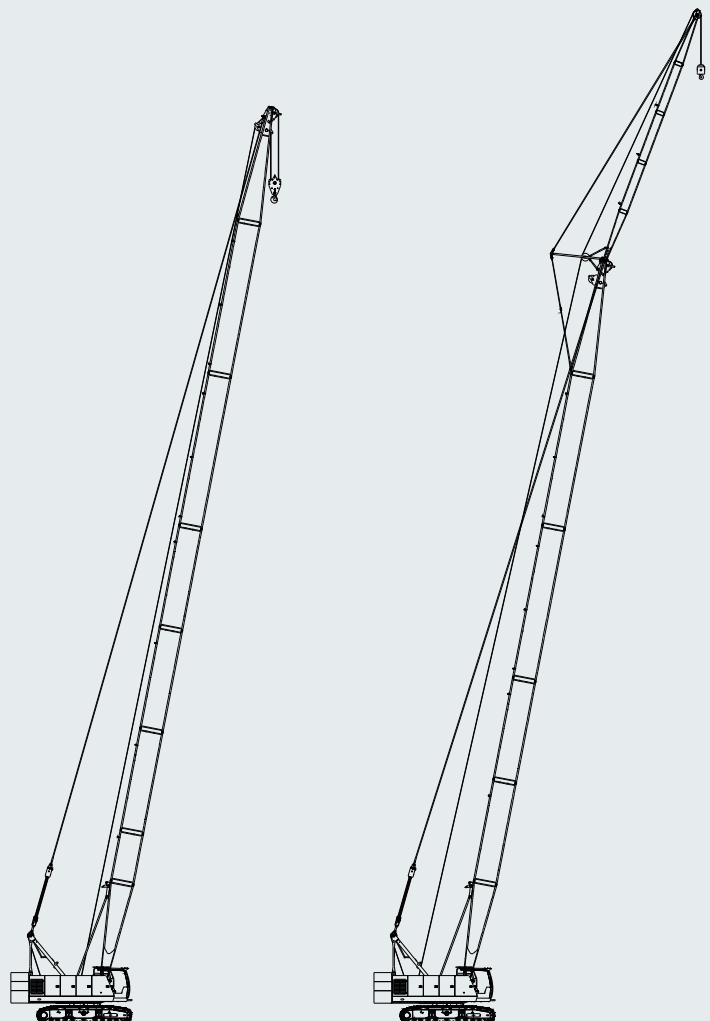
Boom length: 13 m ~ 52 m

FJ

Max. lifting capacity: 7 t

Jib length: 6.1 m ~ 15.25 m

Longest boom + longest jib: 43 m + 15.25 m



H

FJ

LATTICE BOOM CRAWLER CRANE

ADAPTABLE AND VERSATILE **SCE1000A**



100 t



242 kW / 1800 rpm



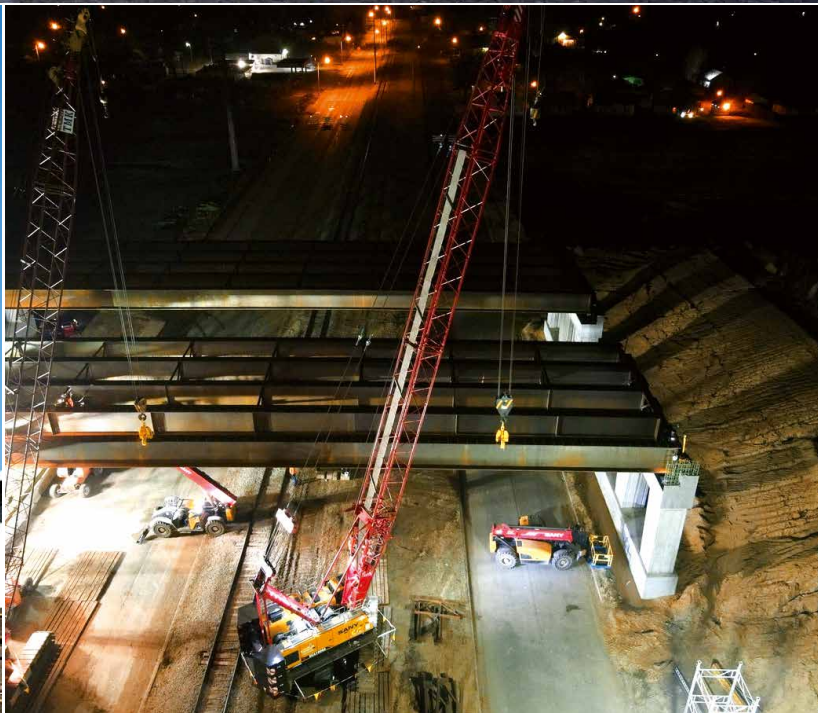
31.2 t



11 t



3.49 m / 5.1 m



- + Reduced operational cost due to globally standard transport plan.
- + Highly efficient self assembly and disassembly, retractable crawlers.
- + Optional main/aux. winch freefall, luffing jib.
- + New smart driver's cab with full consideration given to operator comfort.
- + Deployed as the auxiliary crane for ≤ 6 MW wind turbine erection.
- + Widely applied in steel cage hoisting and steel structure hoisting.

ENGINE

Cummins

MAIN PUMP

Kawasaki

MAIN VALVE

Kawasaki

REDUCER

Rexroth

H

Max. lifting capacity: 100 t

Max. lifting moment: 380 t·m

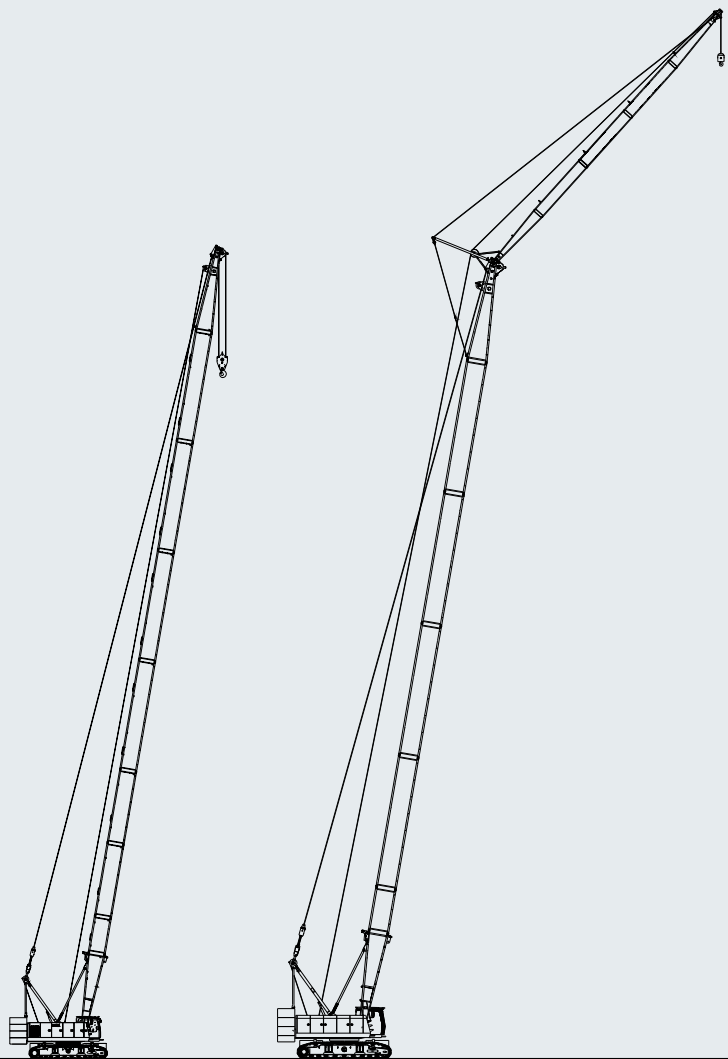
Boom length: 13 m ~ 64 m

FJ

Max. lifting capacity: 11 t

Jib length: 9 m ~ 22.5 m

Longest boom + longest jib: 52 m + 22.5 m



H

FJ

LATTICE BOOM CRAWLER CRANE

**GO GREEN
WITH PURE
ELECTRIC
SOLUTION**

SCE1000A-EV



100 t



206 kW



282 kWh



618 V



28.6 t



11 t



5.09 m / 3.5 m





- + Zero emission, environmentally friendly and energy-saving.
- + With a 282 kWh high-capacity power battery, the endurance exceeds 8 hours (European working conditions).
- + Low operating costs, it reduces operating costs by 45 % compared to traditional fuel-powered models and eliminates engine maintenance expenses.
- + Intelligent safety, it features a high-voltage safety design with real-time insulation monitoring through the Battery Management System (BMS). In the event of a sudden electrical leakage, it can proactively disconnect the high voltage. The charging port includes an electronic lock. The third-generation intelligent control system offers one-touch start/stop functionality and a 10.1-inch touchscreen display for smart and convenient operation.
- + Multiple Charging Modes:
 DC Fast Charging: Supports a maximum of 240 kW DC fast charging, allowing for a quick charging time of as little as 2 hours.
 Multiple AC Power Charging: The AC charger is compatible with various power levels, including 10 kW, 20 kW, 40 kW, and optionally 80 kW, making it suitable for different types of distribution boxes.
 Operation with charging plug in, meeting the diverse needs of customers across various operational scenarios.

ELECTRIC MOTOR

Danfoss

MAIN PUMP

Kawasaki

MAIN VALVE

Kawasaki

REDUCER

Rexroth

H

Max. lifting capacity: 100 t

Max. lifting moment: 380 t·m

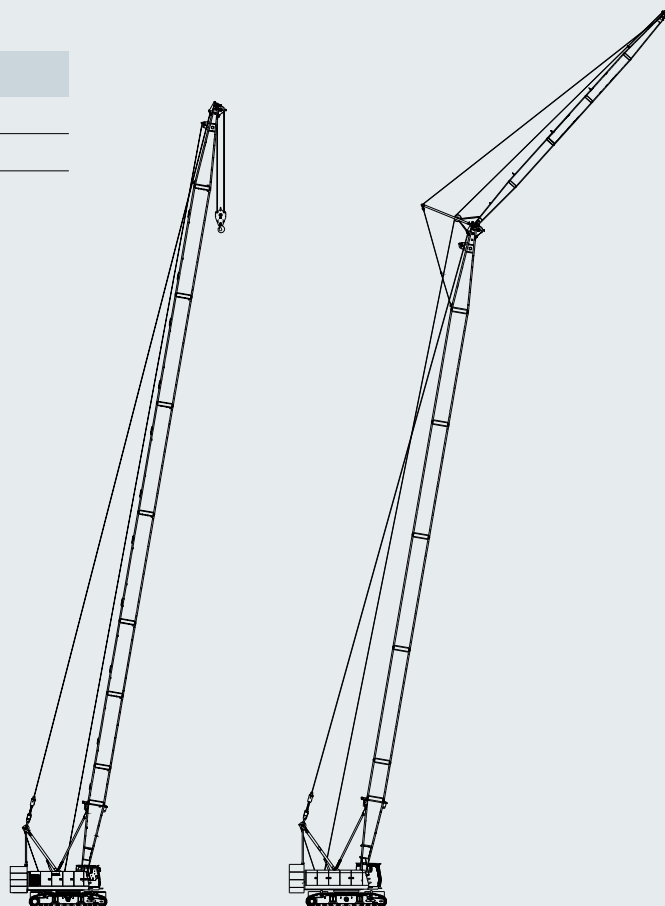
Boom length: 64 m

FJ

Max. lifting capacity: 12 t

Jib length: 9 m ~ 22.5 m

Longest boom + longest jib: 52 m + 22.5 m



H

FJ

LATTICE BOOM CRAWLER CRANE

VERSATILE POWER, UNMATCHED EFFICIENCY **SCE1350A**



135 t



242 kW / 1800 rpm



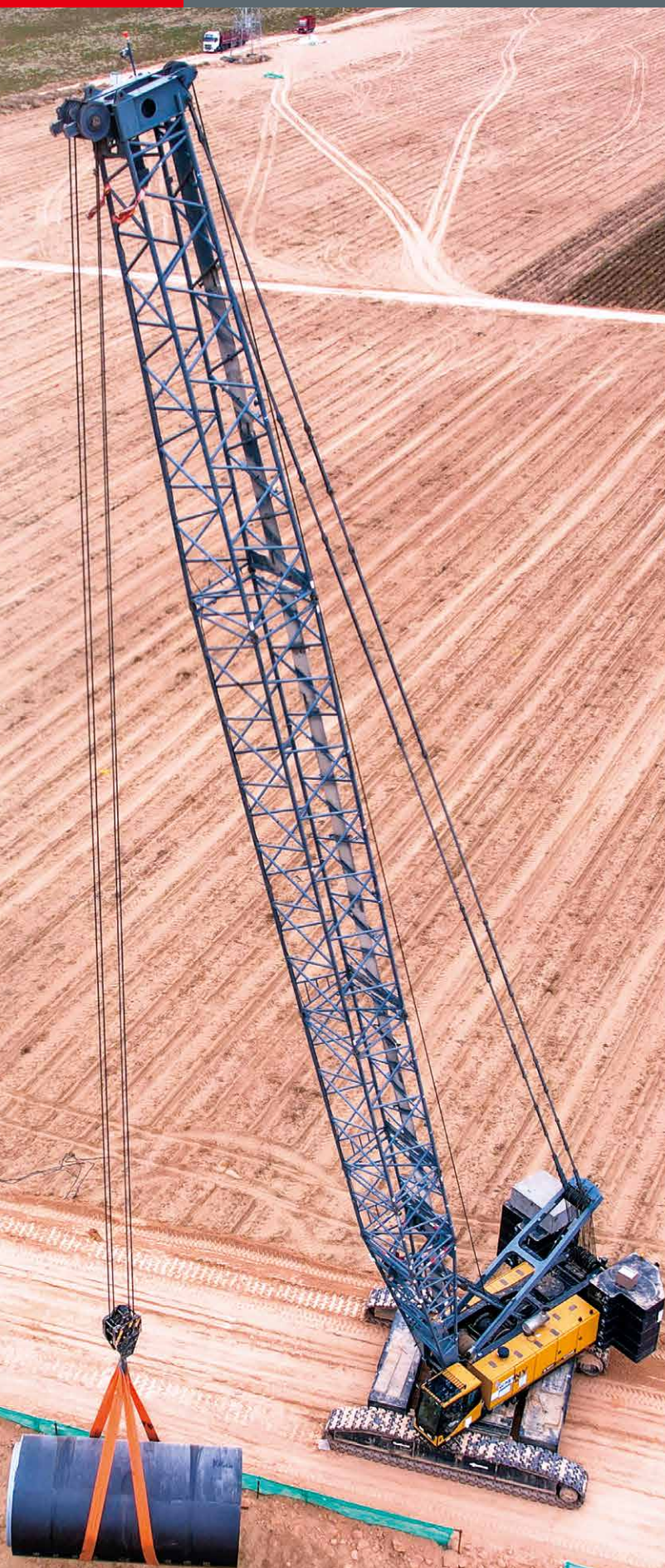
54 t



20 t



5.65 m



- + Reduced operational cost due to globally standard transport plan.
- + Highly efficient self assembly and disassembly.
- + Wide application with optional main/aux. winch freefall, luffing jib.
- + Ground bearing pressure down to 0.112 Mpa.
- + New smart driver's cab with full consideration given to operator comfort.
- + Deployed as the auxiliary crane for ≤ 8 MW wind turbine erection.
- + Standard reduced counterweight load charts available, suitable for trestle bridge hoisting, auxiliary hoisting, operation on soft foundation.
- + Strong lifting capacities on 43 m boom, suitable for subway and steel cage hoisting.

ENGINE

Cummins

MAIN PUMP

Kawasaki

MAIN VALVE

Kawasaki

REDUCER

Rexroth

H

Max. lifting capacity: 135 t

Max. lifting moment: 668 t·m

Boom length: 16 m ~ 76 m

FJ

Max. lifting capacity: 27 t

Jib length: 13 m ~ 31 m

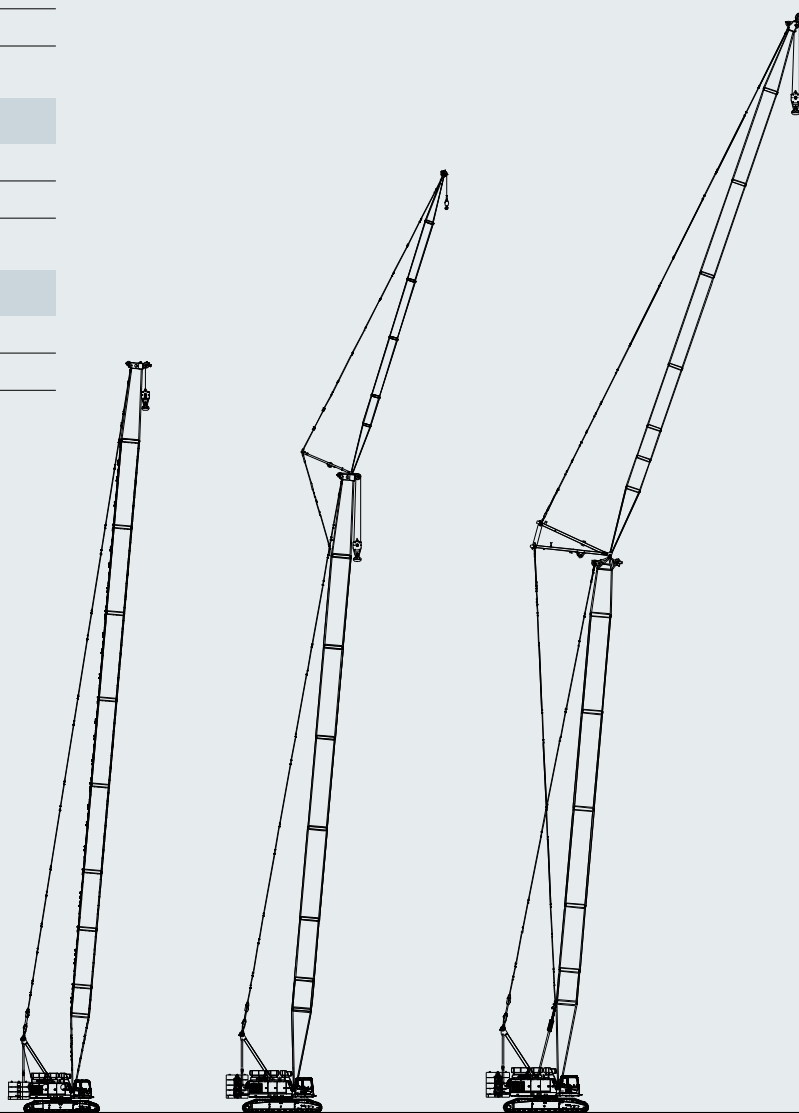
Longest boom + longest jib: 61 m + 31 m

LJ

Max. lifting capacity: 40 t

Jib length: 22 m ~ 52 m

Longest boom + longest jib: 49 m + 52 m



H

FJ

LJ

LATTICE BOOM CRAWLER CRANE

UNBEATABLE EFFICIENCY, ZERO EMISSIONS **SCE1350A-EV**



135 t



336 kW



368 kWh



52 t



20 t



5.65 m





- + Reduced operational cost due to globally standard 3 meter transport plan.
- + Highly efficient self assembly and disassembly.
- + Wide application with optional main/aux. winch freefall, luffing jib.
- + Ground bearing pressure down to 0.112 Mpa.
- + New smart driver's cab with full consideration given to operator comfort.
- + Standard reduced counterweight load charts available, suitable for trestle bridge hoisting, auxiliary hoisting, operation on soft foundation.
- + Strong lifting capacities on 43 m boom, suitable for subway and steel cage hoisting.
- + Zero emission, fast charging, long working range.

ELECTRIC MOTOR
Danfoss

MAIN PUMP
Kawasaki

MAIN VALVE
Kawasaki

REDUCER
Rexroth

H

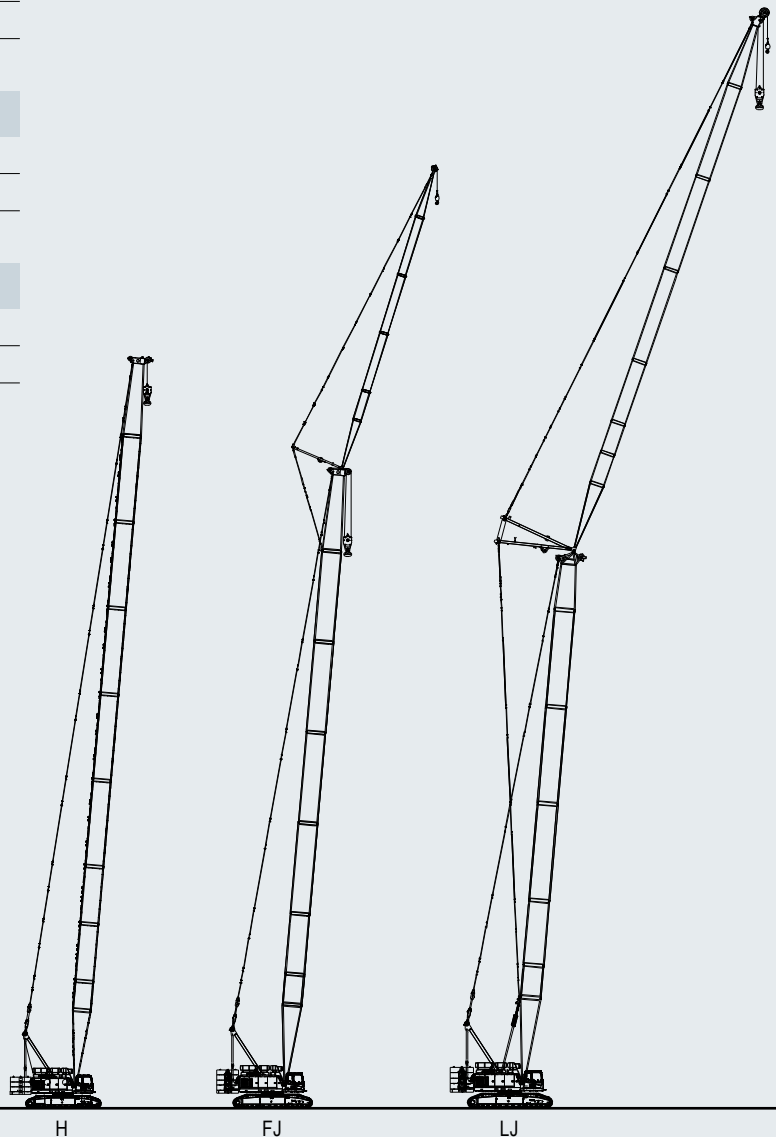
Max. lifting capacity: 135 t
Max. lifting moment: 668 t·m
Boom length: 16 m ~ 76 m

FJ

Max. lifting capacity: 27 t
Jib length: 13 m ~ 31 m
Longest boom + longest jib: 61 m + 31 m

LJ

Max. lifting capacity: 40 t
Jib length: 22 m ~ 52 m
Longest boom + longest jib: 49 m + 52 m



LATTICE BOOM CRAWLER CRANE

HEAVY LIFTS. GREEN SHIFTS SCC2000A-EV



200 t



234 kW



422.87 kWh



77 t



20 t



7.5 m





- + High-capacity 422 kWh battery – over 8 hours of runtime for uninterrupted operation.
- + European standard dual-gun DC fast charging – full charge in less than 2 hours, supports AC charging for safer and more reliable operation.
- + Third-generation intelligent control system – wireless remote control for the whole machine, making operation effortless and enjoyable.
- + Innovative chain-type flat track pads for enhanced adaptability across various terrains.
- + Mixed boom technology with a three-stage nesting boom design, enabling full transportation with just seven trailers.

BATTERY
CATL

ELECTRIC MOTOR
Danfoss

MAIN PUMP
Danfoss

MAIN VALVE
Danfoss

H

Max. lifting capacity: 200 t

Max. lifting moment: 1304 t·m

Boom length: 20 m ~ 86 m

FJ

Jib length: 12 m ~ 30 m

Longest boom + longest jib: 59 m + 24 m / 53 m + 30 m

LJ

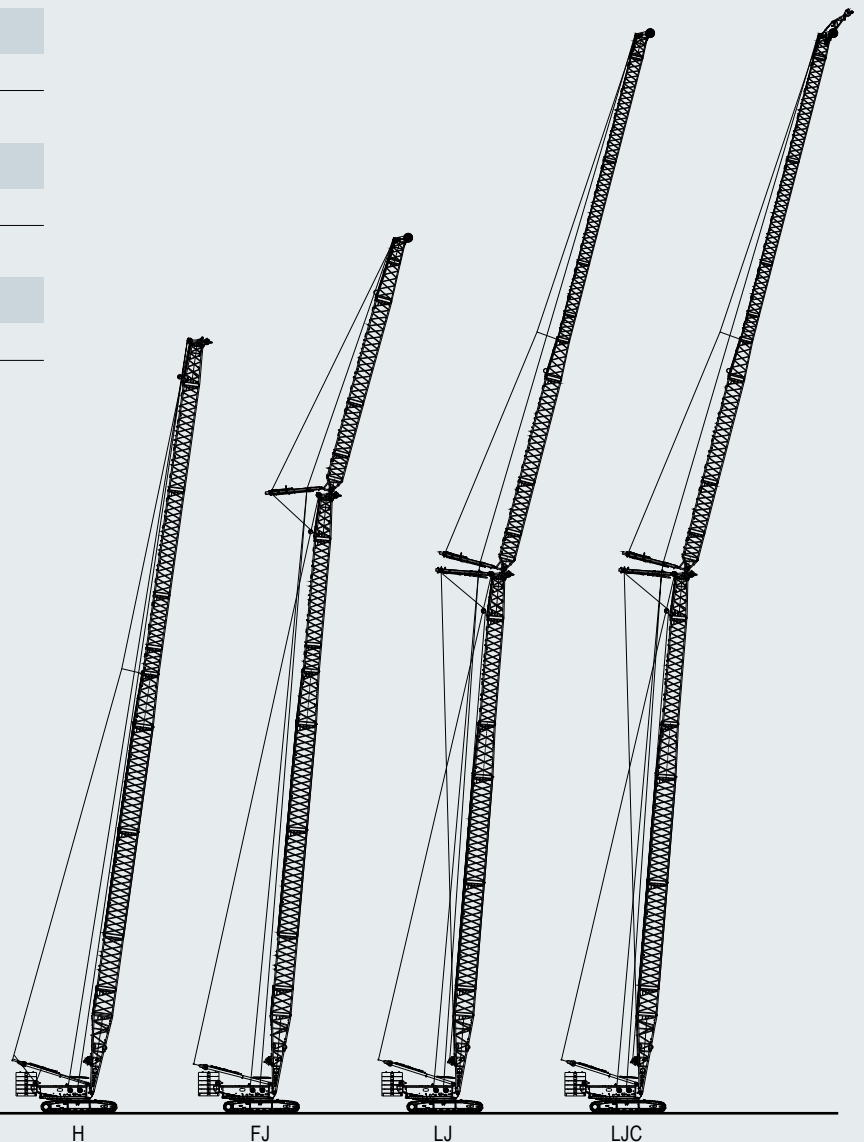
Jib length: 18 m ~ 63 m

Longest boom + longest jib: 59 m + 63 m

LJC

Jib length: 18 m ~ 63 m

Longest boom + longest jib: 56 m + 63 m



H

FJ

LJ

LJC

LATTICE BOOM CRAWLER CRANE

INTELLIGENT POWER, PRECISION PERFORMANCE **SCE2500A**



250 t



86 t



25 t



7.5 m



- + The main machine can be transported with a 3 m-wide boom base, saving time and effort during installation.
- + Immediate response, with handle start-stop reaction time <0.5 seconds.
- + Includes work area restrictions, real-time ground pressure display, and smart operation monitoring.
- + Engine features automatic idling and shutdown, with an efficient mode for low overall fuel consumption.

ENGINE

Cummins

MAIN PUMP

InLine

MAIN VALVE

SANY

REDUCER

SANY / Zhuzhou Gear

H

Max. lifting capacity: 250 t

Max. lifting moment: 1380 t·m

Boom length: 16 m ~ 85 m

FJ

Max. lifting capacity: 36.3 t

Jib length: 13 m ~ 31m

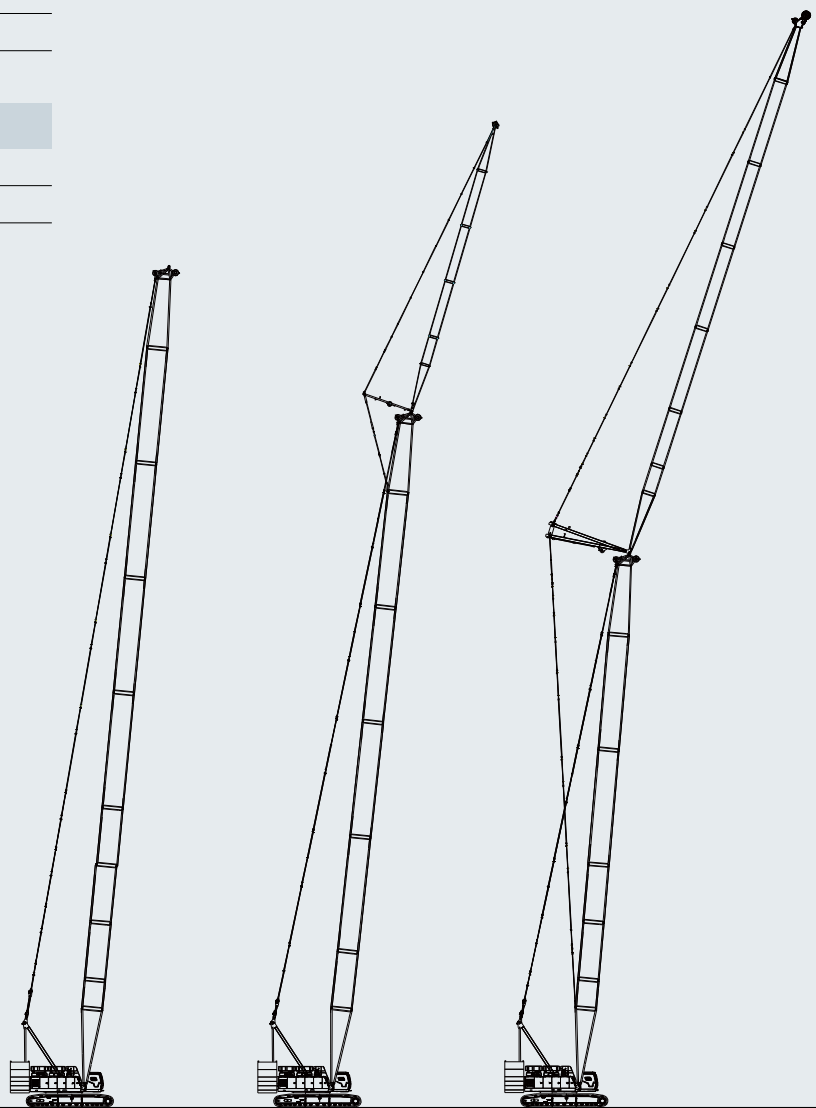
Longest boom + longest jib: 70 m + 31 m

LJ

Max. lifting capacity: 66.8 t

Jib length: 22 m ~ 58 m

Longest boom + longest jib: 55 m + 58 m



H

FJ

LJ

ALL ROUNDER FOR INFRASTRUCTURE BUILDING **SCE2800A**



280 t



298 kW



100 t



40 t



6.78 m



- + Widely applied in storied building, factory, subway, bridge, pipeline, port and base construction.
- + Self-dis/assembly of boom base, rear counterweight, and crawlers.
- + Ground bearing pressure down to 0.14 Mpa.
- + Boom and jib with reduced width, suitable for transportation in Europe.
- + Optional main/aux. hoist winch freefall.
- + Porsche driver's cab featuring streamlined modeling and convenient control.

ENGINE

Cummins

MAIN PUMP

Rexroth

MAIN VALVE

Rexroth

REDUCER

Rexroth / O&K

H

Max. lifting capacity: 280 t

Max. lifting moment: 1500 t·m

Boom length: 20 m ~ 92 m

FJ

Max. lifting capacity: 74.2 t

Jib length: 13 m ~ 42 m

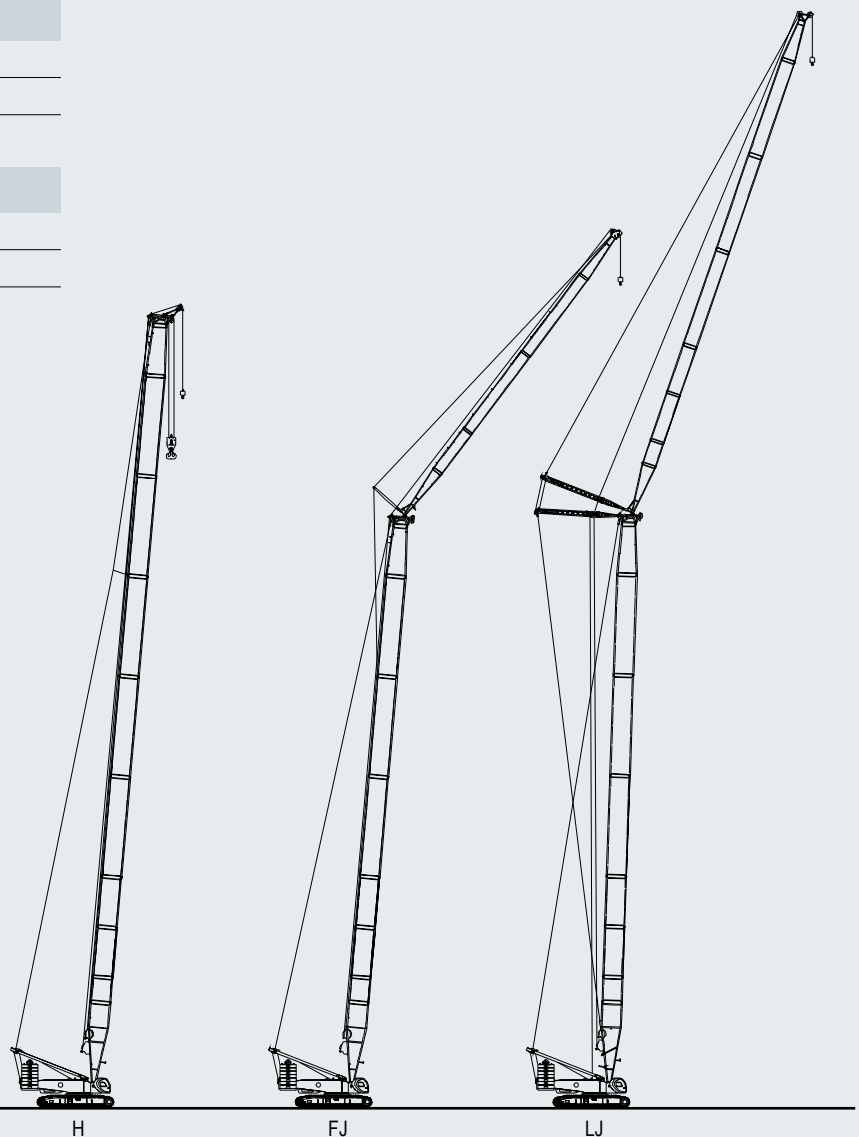
Longest boom + longest jib: 62 m + 42 m

LJ

Max. lifting capacity: 110 t

Jib length: 21 m ~ 63 m

Longest boom + longest jib: 62 m + 63 m



PIONEER OF CONSTRUCTION SCC3200T



320 t



Stage V



Full configuration (boom+fixed jib+luffing jib)
87m+37m+70m



- + The new generation of "T-series" products, developed under a global design concept, are tailored to meet the diverse needs of markets including Europe, the USA, Australia, and South Korea.
- + Multi-Main Pump Hydraulic System: Featuring electric proportional adjustment for both the main pump and valve, this system offers precise, efficient performance with multi-function capabilities, multi-stage speeds, and fine inching control.
- + Self-Disassembly/Assembly: The boom base, rear counterweight, and crawlers can be easily disassembled and assembled, providing enhanced convenience for transport and setup.
- + Modular Boom: With configurations like H 87 m, LJ 60 m + 70 m, and FJ 63 m + 13 m, the modular boom system allows for interchangeable parts across various configurations, significantly reducing costs for customers in terms of purchasing and storage.

ENGINE

Cummins

MAIN PUMP

Rexroth

HOISTING REDUCER

Rexroth

TRAVELING REDUCER

O&K

H

Max. lifting capacity: 320 t

Max. lifting moment: 2000 t·m

Boom length: 24 m ~ 87 m

HJ

Max. lifting capacity: 145 t

Boom length: 58.5 m ~ 97.5 m

FJ

Max. lifting capacity: 88.9 t

Jib length: 13 m ~ 37 m

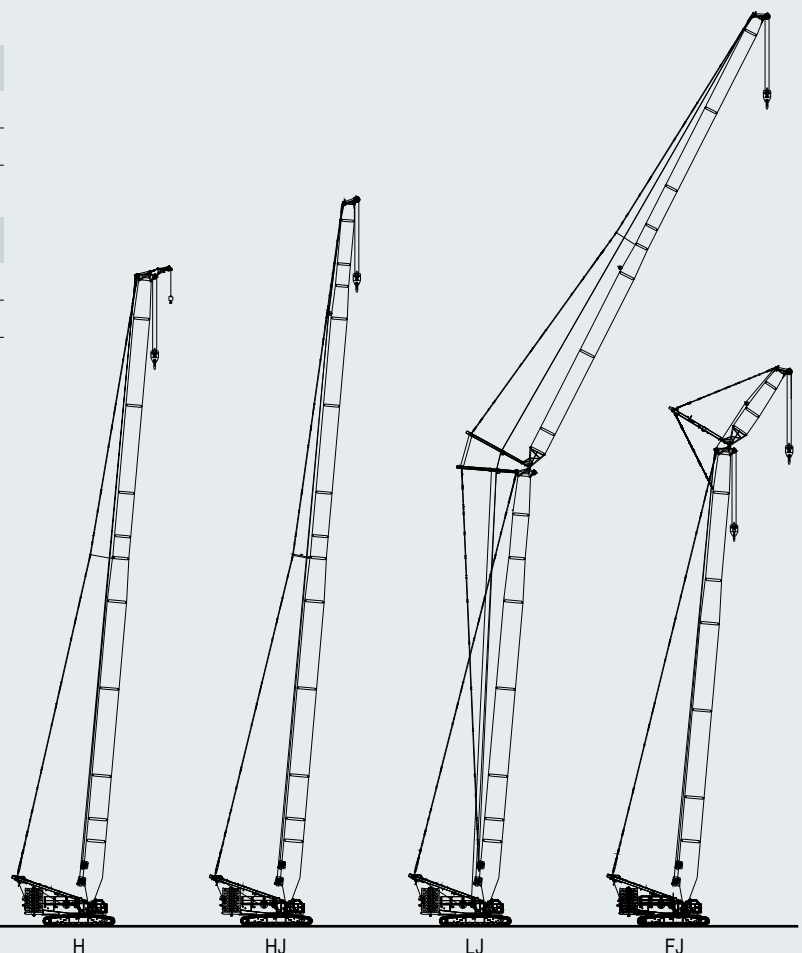
Longest boom + longest jib: 45 m + 37 m

LJ

Max. lifting capacity: 127 t

Jib length: 25 m ~ 70 m

Longest boom + longest jib: 60 m + 70 m



H

HJ

LJ

FJ

STRONG AND RELIABLE SCE4000A-1



400 t



298 kW / 2100 rpm



150 t



40 t



7.3 m



- + Suitable for shield hoisting, wind power maintenance, petrochemical and logistics park hoisting.
- + Powered pins fitted for efficient dis/assembly of the whole machine.
- + Neat hydraulic tube arrangement.
- + Reserved maintenance access for easy troubleshooting and maintenance.

ENGINE

Cummins

MAIN PUMP

Rexroth

MAIN VALVE

Rexroth

REDUCER

Rexroth

H

Max. lifting capacity: 400 t

Max. lifting moment: 2695 t·m

Boom length: 24 m ~ 84 m

LJ

Max. lifting capacity: 165 t

Jib length: 21 m ~ 75 m

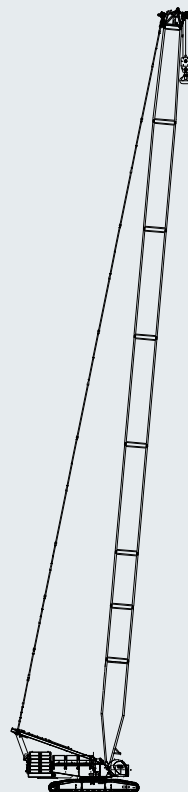
Longest boom + longest jib: 66 m + 75 m

HJFJ

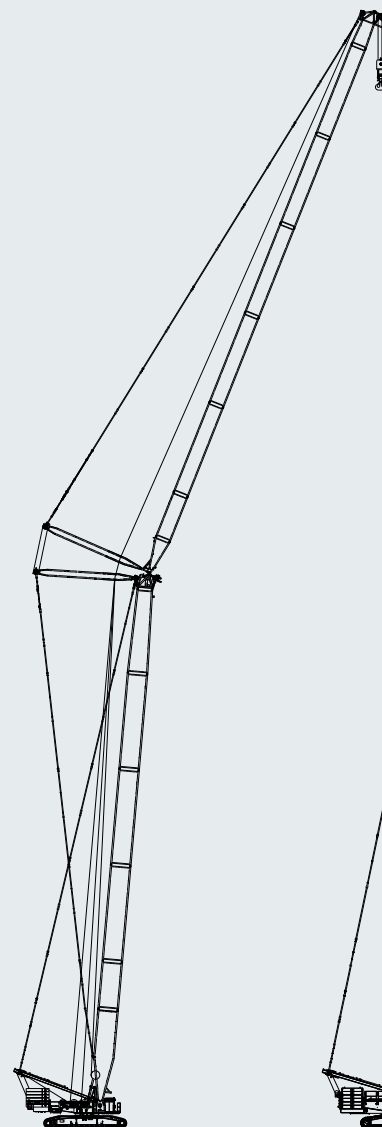
Max. lifting capacity: 72.8 t

Jib length: 9 m

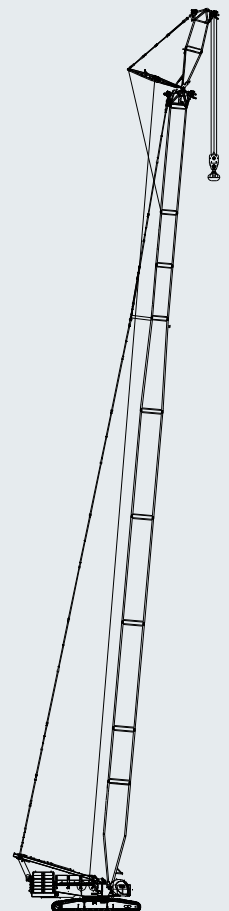
Longest boom + longest jib: 90 m + 9 m



H



LJ



HJFJ

LATTICE BOOM CRAWLER CRANE

SMART AND STRONG SCE4800A



480 t



298 kW / 2100 rpm



180 t



50 t



210 t



7.63 m



- + More adaptable to constricted jobsite with front erection outriggers.
- + Suitable for installation and maintenance of 3 MW wind turbine with maximum height of 120 m.
- + Stronger capacity at LJ 60 m + 72 m without superlift device.
- + Smart operation realized by wireless remote control and extra large touch displays.

ENGINE

Cummins

MAIN PUMP

Rexroth

MAIN VALVE

Rexroth

REDUCER

Rexroth

H

Max. lifting capacity: 480 t

Max. lifting moment: 2984 t·m

Boom length: 24 m ~ 84 m

LJ

Max. lifting capacity: 177 t

Luffing jib length: 24 m ~ 72 m

Longest boom + longest luffing jib: 60 m + 72 m

HJFJ-2

Max. lifting capacity: 140 t

Fixed jib length: 72 m ~ 96 m

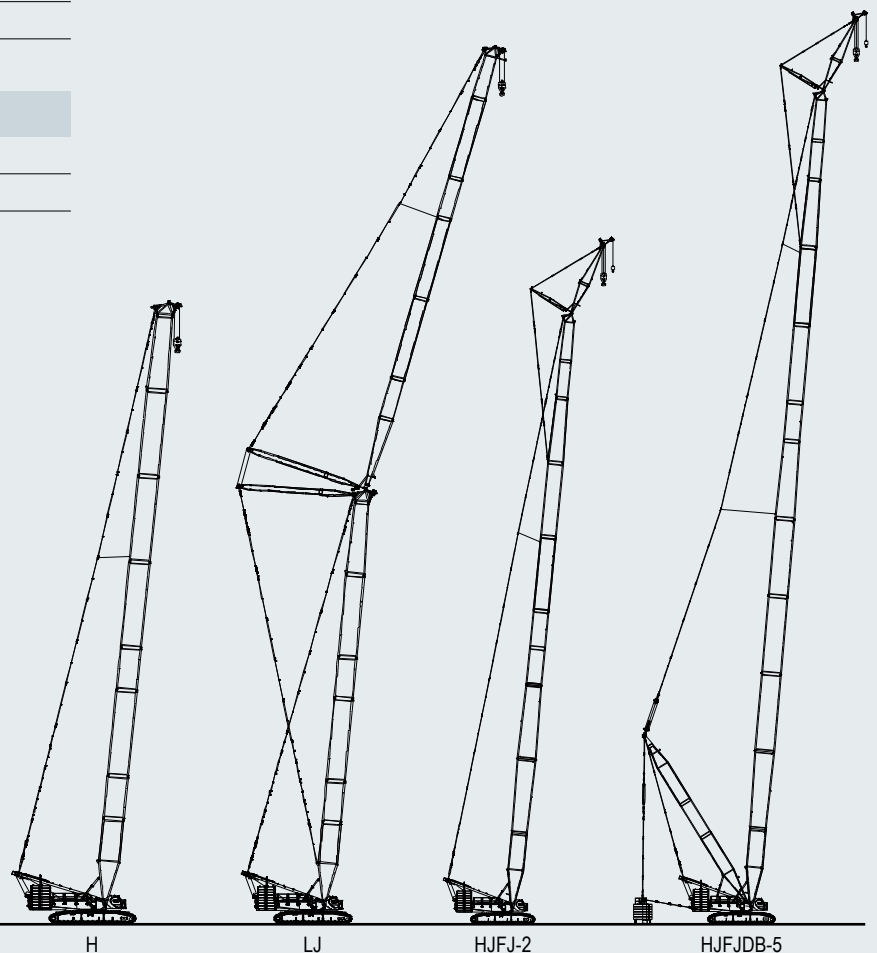
Longest boom + longest jib: 96 m + 12 m

HJFJDB-5

Max. lifting capacity: 133 t

Fixed jib length: 96 m ~ 126 m

Longest boom + longest jib: 126 m + 12 m



H

LJ

HJFJ-2

HJFJDB-5

STRONG AND EFFICIENT SCE6000A



600 t



447 kW / 1800 rpm



280 t + 210 t (superlift CW)



50 t



8 m

- + Strong lifting capacities suitable for wind turbine installation with maximum tower height of 130 m.
- + Fast set-up and disassembly via one-key erection of mast and self dis/assembly of crawler frames.
- + Economical transport, meeting global transport standards.
- + Optimal safety guaranteed by remote controlled operation and one-key adjustment of center of gravity.
- + More adaptable to constricted jobsite with front erection outriggers.
- + Smart operation realized by wireless remote control and extra large touch displays.
- + Optional front erection outriggers, requiring less space, specifically designed for maintenance of mountain wind turbines.

ENGINE

Cummins

MAIN PUMP

Rexroth

MAIN VALVE

Rexroth

REDUCER

Rexroth

H

Max. lifting capacity: 600 t

Max. lifting moment: 3528 t·m (7200 t·m with superlift)

Boom length: 24 m ~ 84 m (138 m with superlift)

FJh

Max. lifting capacity: 558 t

Jib length: 12 m

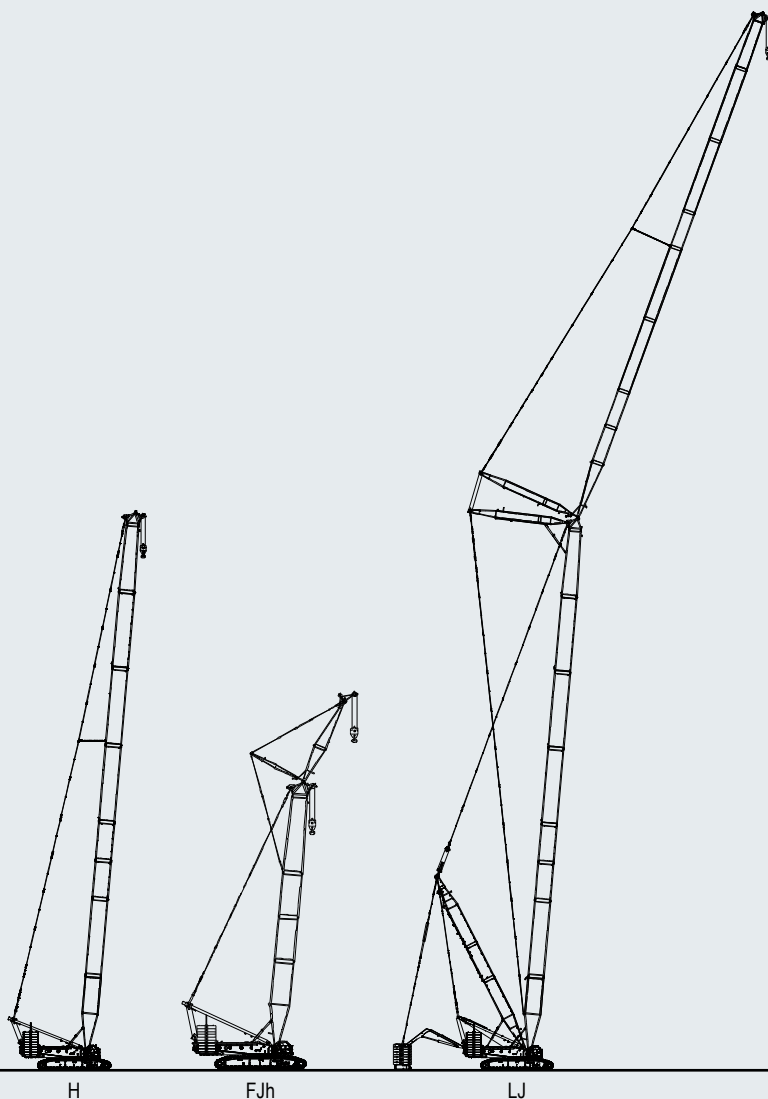
Longest boom + longest jib: 36 m + 12 m

LJ

Max. lifting capacity: 217 t

Jib length: 24 m ~ 72 m (84 m with superlift)

Longest boom + longest jib: 66 m + 72 m (84m with superlift)



POWER MEETS PRECISION **SCE8000A**



800 t



447 kW / 1800 rpm



230 t



80 t



390 t



9 m



- + Strong lifting capacities suitable for wind turbine installation with maximum tower height of 162 m.
- + Fast set-up and disassembly via one-key erection of mast and self dis/assembly of crawler frames.
- + Economical transport, meeting global transport standards.
- + Optimal safety guaranteed by remote controlled operation and one-key adjustment of center of gravity.
- + The average ground bearing pressure in wind power condition is reduced to 0.2 MPa.

ENGINE

Cummins

MAIN PUMP

Rexroth

MAIN VALVE

Rexroth

REDUCER

Rexroth

H

Max. lifting capacity: 800 t

Max. lifting moment: 4956 t·m

Boom length: 99 m

HDB

Max. lifting capacity: 800 t

Max. lifting moment: 12000 t·m

Boom length: 111 m

ZHJFJ

Max. lifting capacity: 240 t

Jib length: 12 m

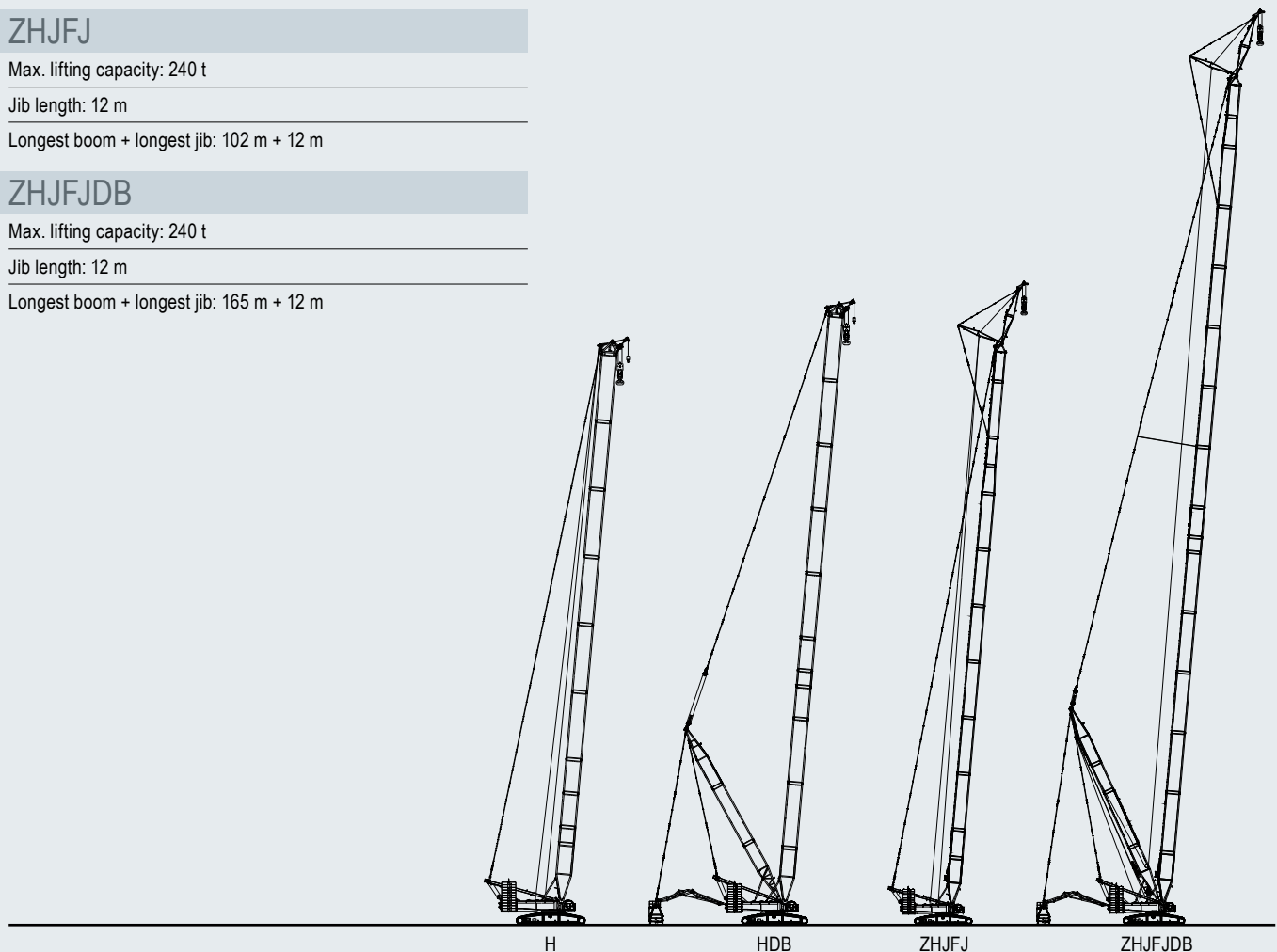
Longest boom + longest jib: 102 m + 12 m

ZHJFJDB

Max. lifting capacity: 240 t

Jib length: 12 m

Longest boom + longest jib: 165 m + 12 m



H

HDB

ZHJFJ

ZHJFJDB

BLENDING HEIGHT WITH OPTIMUM POWER **SCE12500A**



1250 t



2×315 kW



250 t



90 t



550 t



9.8 m



- + HDB 90 m suitable for 700 t petrochemical packed column hoisting, LJDB 108 m + 114 m delivering larger lifting range, HJFJDB 165 m + 12 m suitable for onshore 160 m wind turbine erection.
- + Ultra long boom erected within 30 min thanks to double pump confluence technology.
- + Double Mercedes-Benz engines, reliable power system.
- + Fast dis/assembly with powered pins and wireless remote control.
- + Boom/jib nested for economical transport and stacked in three layers, 60 % less storing space needed.
- + Porsche driver's cab featuring streamlined modeling, wider view and better NVH performance.

ENGINE
Benz

MAIN PUMP
Danfoss

MAIN VALVE
Rexroth

REDUCER
Rexroth

H

Max. lifting capacity: 1250 t

Max. lifting moment: 19800 t·m

Boom length: 108 m

HJDB

Max. lifting capacity: 650 t

Boom length: 171 m

LJDB

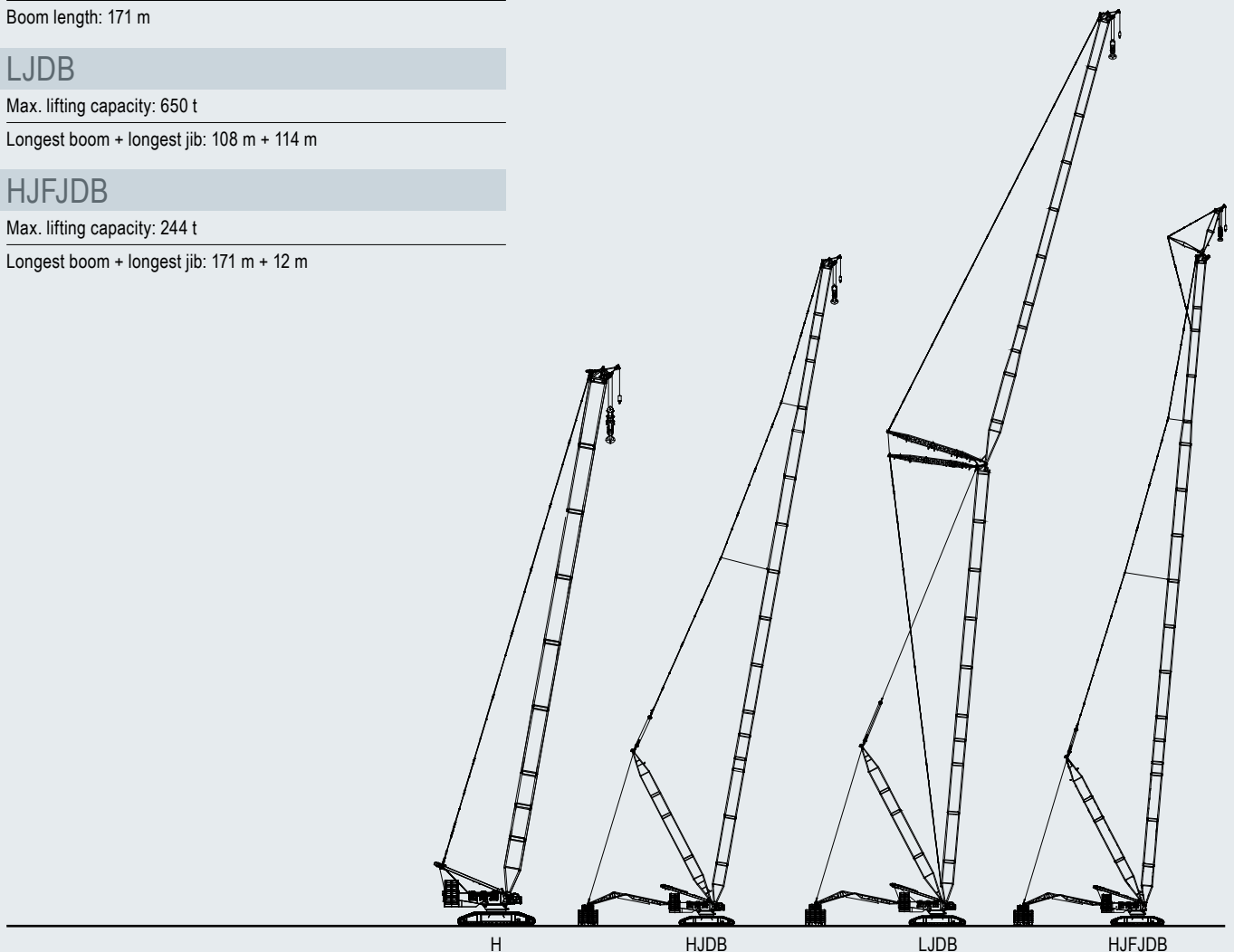
Max. lifting capacity: 650 t

Longest boom + longest jib: 108 m + 114 m

HJFJDB

Max. lifting capacity: 244 t

Longest boom + longest jib: 171 m + 12 m



H

HJDB

LJDB

HJFJDB

LATTICE BOOM CRAWLER CRANE

SUPER HEAVY LIFTER SCE22000A



2200 t



2×390 kW



340 t



89 t



1160 t



11.5 m

- + Optimal safety guaranteed by remote controlled operation and one-key adjustment of center of gravity.
- + Strong lifting capacities and performances in petrochemical and nuclear power plant applications.
- + Capable of making up a 4000 tonner by two 2200 t units with a few additional parts.
- + An option of using 500t auxiliary crane as superlift counterweight wagon to realize superlift counterweight grounding slewing.
- + Optional powerful three-winch working condition, pioneering in petrochemical application.
- + Optional superlift counterweight suspension system increases operation efficiency by 20%.
- + Maximum transport weight of single piece less than 55 t, detaching mechanism adopted between slewing bearing and undercarriage.
- + Double-engine mode featuring higher operation speed, single-engine mode with lower energy cost.
- + Key components imported from well-known brands of high reliability.
- + Capacious cabin providing wider view and accommodating a crew of more people.
- + Smart lifting software including ground bearing pressure offered for free.

ENGINE
Benz

MAIN PUMP
Rexroth

MAIN VALVE
Rexroth

REDUCER
Rexroth

HDB

Max. lifting capacity: 2200 t

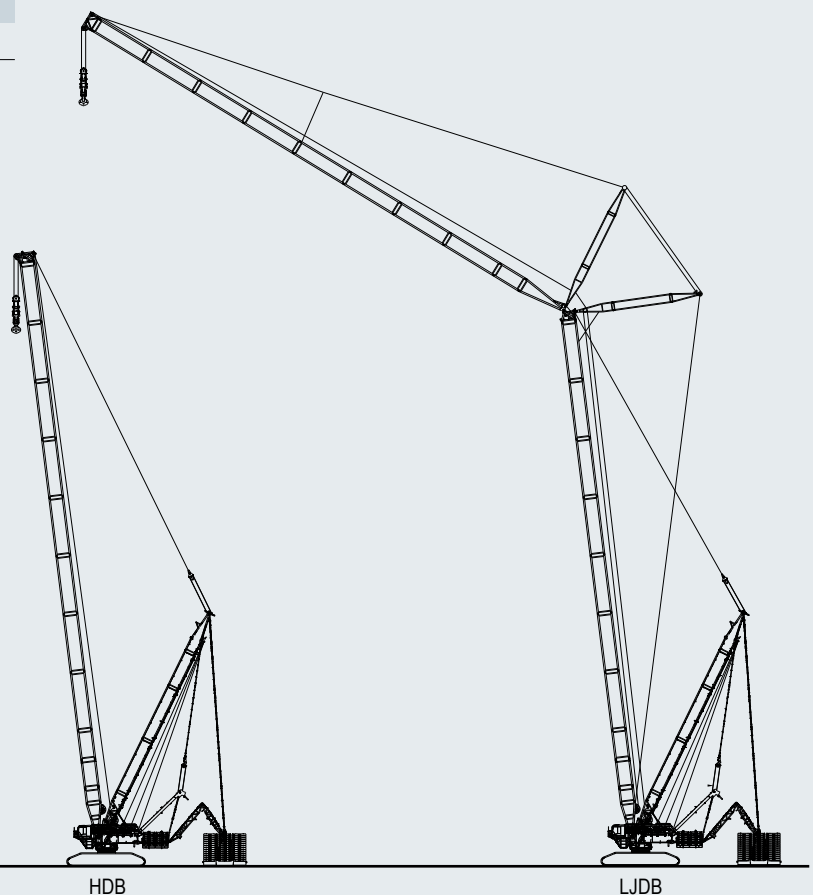
Max. lifting moment: 38000 t·m

Boom length: 54 m ~ 120 m

LJDB

Max. lifting capacity: 917 t

Longest boom + longest jib: 108 m + 108 m



HDB

LJDB

TELESCOPIC CRAWLER CRANE

SIMPLE AND RELIABLE SCE400TB



40 t



168 kW / 1800 rpm



13 t



4.65 m / 2.99 m



- + U-shape large profile boom with max. lifting moment 160 t.m, lifting performance improved by more than 15 %.
- + Fully retracted width 3 m, only 1 trailer needed for the whole machine transportation.
- + The third-generation intelligent control system, one-button start/stop, 10.1" dual touchscreen display, intelligent and convenient.
- + Combined motions are carried out efficiently, with each motion starting and braking smoothly.

ENGINE

Cummins

MAIN PUMP

Danfoss

MAIN VALVE

Danfoss

REDUCER

Brevini / Zhuzhou Gear

H

Max. lifting capacity: 40 t

Max. lifting moment: 160 t.m

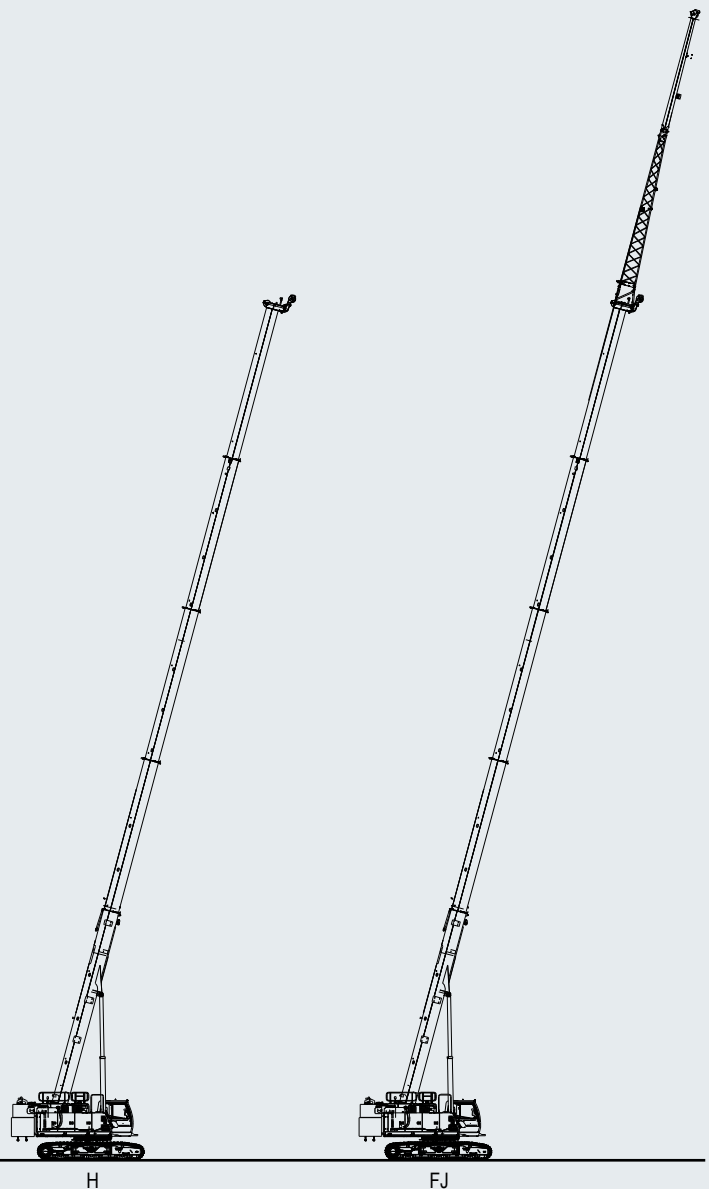
Boom length: 11.3 m ~ 44 m

FJ

Max. lifting capacity: 3.4 t

Jib length: 9.2 m / 16 m

Longest boom + longest jib: 44 m + 16 m



TELESCOPIC CRAWLER CRANE

HIGH COST PERFORMANCE **STB500T5-EV**



50 t



146 kW / 1800 rpm



13 t



4.65 m / 3.82 m / 2.99 m





- + Pure electric, low emission, environmentally friendly and energy saving.
- + Long Battery Range Equipped with 210 kWh high-capacity power battery, supporting 8h long time operation.
- + Lower Operating Cost Reduces energy consumption costs by 37 % compared to traditional fuel engine models and eliminates engine maintenance expenses.
- + Safe and Reliable High voltage safety design, real-time insulation monitoring by BMS, capable of actively disconnecting high voltage in the event of sudden leakage, third-generation intelligent control system, one-button start/stop, 10.1" dual touchscreen display, intelligent and convenient.
- + Fast Charging Support 120 kW DC charging, charging time <2h.
- + 10 kW, 20 kW, 40 kW, 80 kW AC charging modes are available for customers, applicable to all site power configurations.
- + High Adaptability Equipped with lower structure charging port, allowing an operation with charging plug in, meeting various customer usage scenarios.

BATTERY
CATL

ELECTRIC MOTOR
Dana

MAIN PUMP
Danfoss

MAIN VALVE
Danfoss

H

Max. lifting capacity: 50 t

Max. lifting torque: 160 t·m

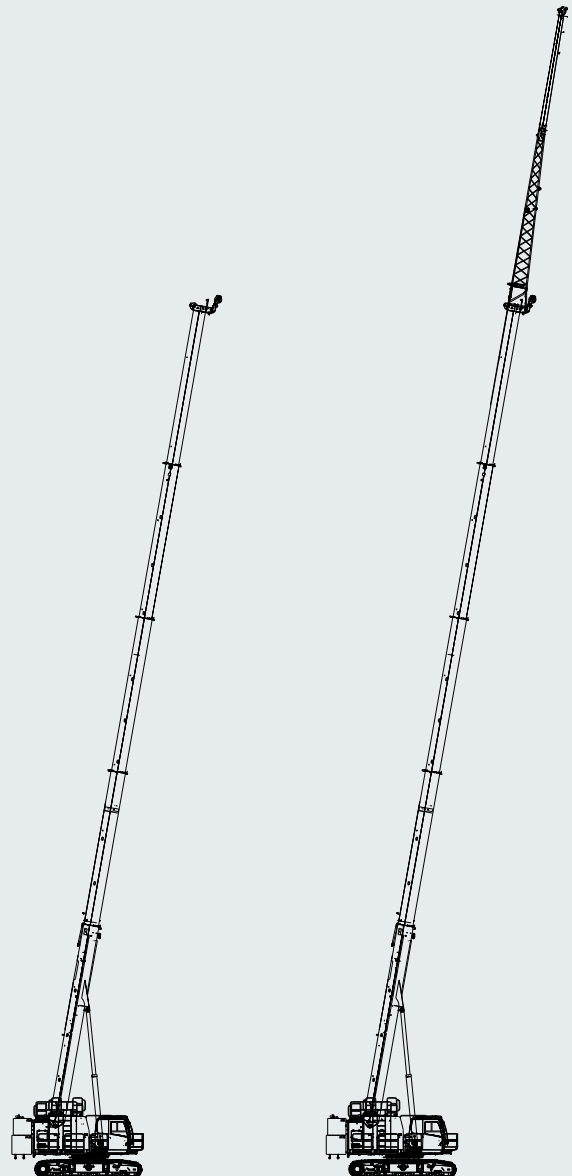
Boom length: 11.3 m ~ 44 m

FJ

Max. lifting capacity: 3.5 t

Jib options: 9.2 m / 16 m

Boom combination: 44 m + 16 m



H

FJ

TELESCOPIC CRAWLER CRANE

MOVE & WORK EFFICIENTLY **SCE600TB**



60 t



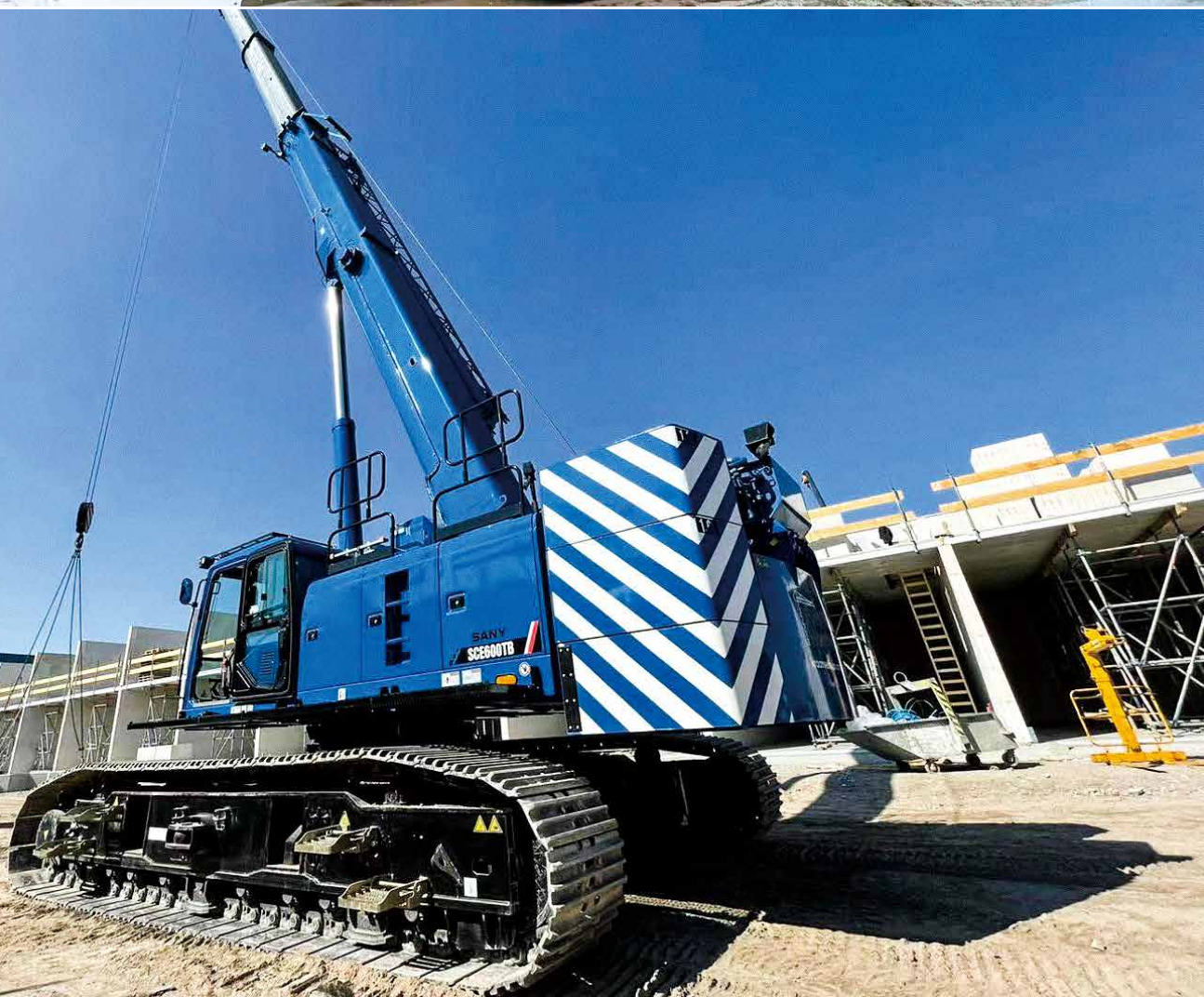
145 kW / 2000 rpm



19 t



4.8 m / 4.05 m / 3 m



- + Lower operational cost with globally standard transport solution.
- + Fast set-up with self loading and unloading of counterweight.
- + New smart cab of optimal operator comfort.
- + Ground bearing pressure down to 0.095 MPa.
- + 4° gradient load chart available.

ENGINE

Cummins

MAIN PUMP

InLine

MAIN VALVE

Rexroth

REDUCER

Rexroth / Brevini

H

Max. lifting capacity: 60 t

Max. lifting moment: 220 t·m

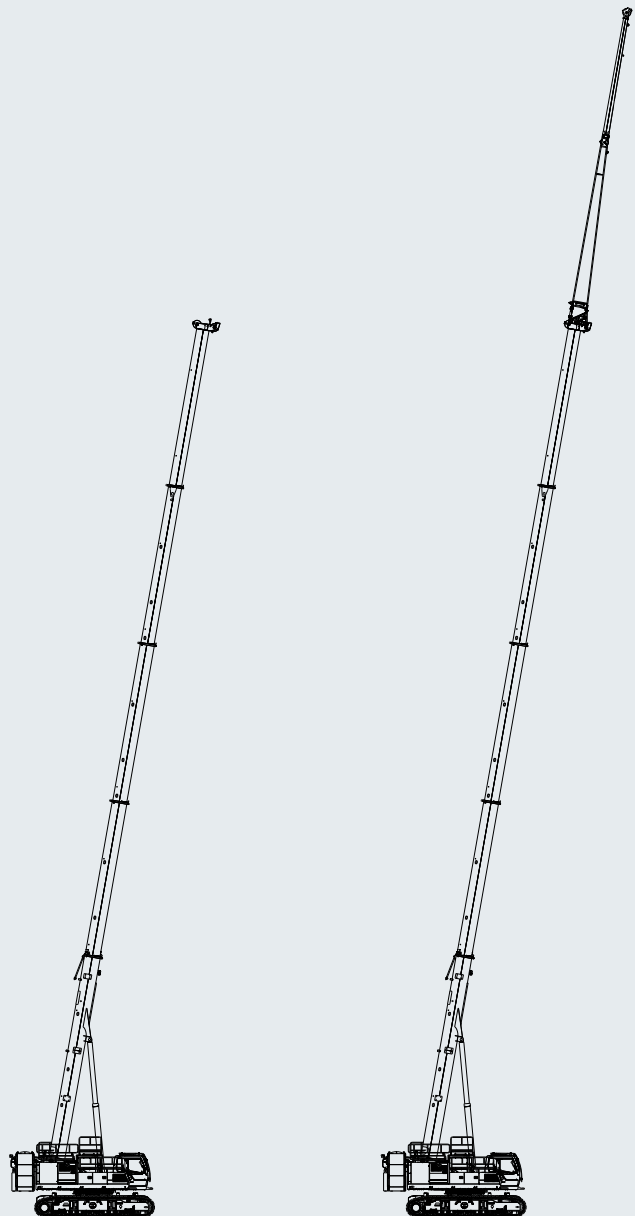
Boom length: 11.88 m ~ 46 m

FJ

Max. lifting capacity: 5 t

Jib length: 9.2 m / 16 m

Longest boom + longest jib: 46 m + 16 m



H

FJ



TELESCOPIC CRAWLER CRANE

PROVEN RELIABILITY SCE800TB



80 t



242 kW /1800 rpm



26 t



6 t



5.10 m / 4.30 m / 3.49 m



- + Reduced operational cost due to globally standard transport plan.
- + Ground bearing pressure down to 0.09 Mpa.
- + Strong lifting capacity, with slope load charts.
- + Driver's cab equipped with large touch screen, more convenient control.

ENGINE

Cummins

MAIN PUMP

Danfoss

MAIN VALVE

Rexroth

REDUCER

Rexroth / O&K

H

Max. lifting capacity: 80 t

Max. lifting moment: 300 t·m

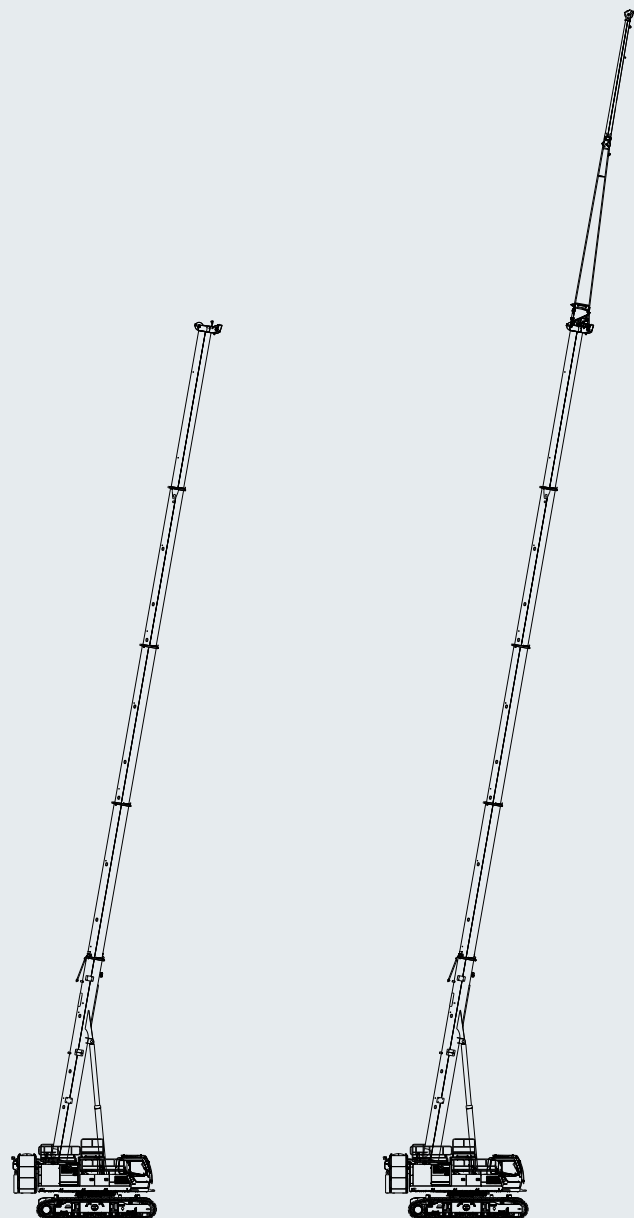
Boom length: 47 m

FJ

Max. lifting capacity: 5.5 t

Jib length: 10.2 m / 17.5 m

Longest boom + longest jib: 47 m + 17.5 m



H

FJ



TELESCOPIC CRAWLER CRANE

SUSTAINABLE POWER, EMISSION-FREE **SCE800TB-EV**



80 t



206 kW / 1500 rpm



282 kWh



618 V



26 t



6 t



5.10 m / 4.30 m / 3.49 m





- + Zero emission, environmentally friendly and energy-saving.
- + Large capacity battery of ultra long range.
- + New smart cab of optimal operator comfort.
- + Lower operational cost with globally standard transport solution.
- + Self dis/assembly system, retractable crawlers, higher efficiency.

ELECTRIC MOTOR
Danfoss

MAIN PUMP
Danfoss

MAIN VALVE
Danfoss

REDUCER
Rexroth / O&K

H

Max. lifting capacity: 80 t

Max. lifting moment: 313 t·m

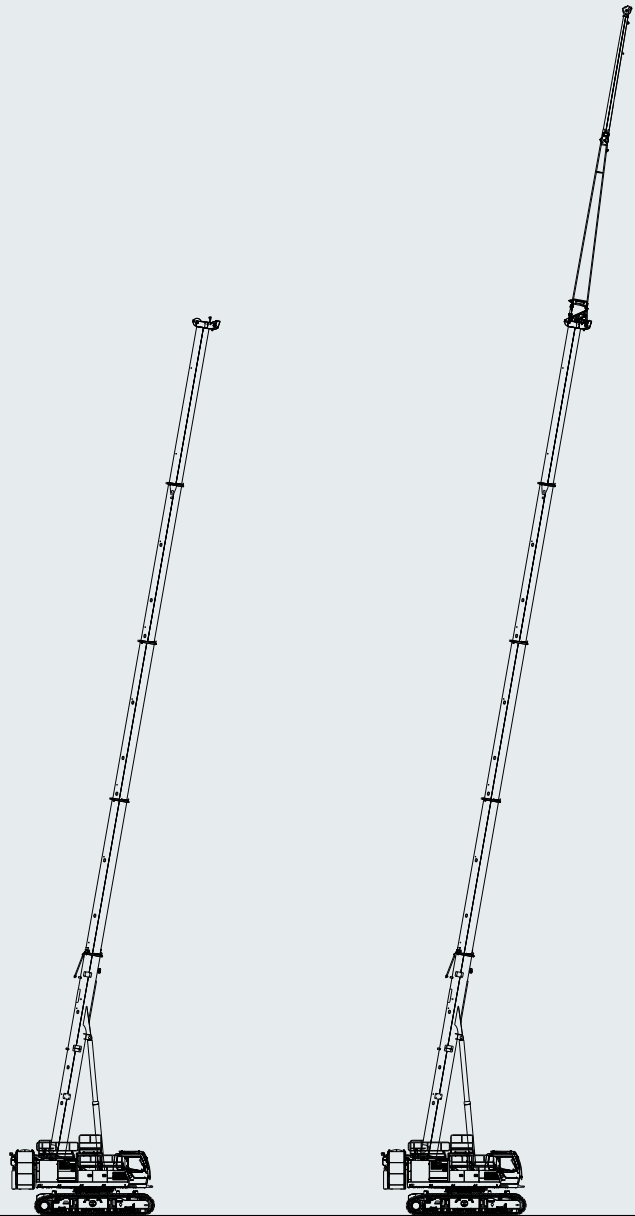
Boom length: 47 m

FJ

Max. lifting capacity: 5.5 t

Jib length: 10.2 m / 17.5 m

Longest boom + longest jib: 47 m + 17.5 m



H

FJ

TELESCOPIC CRAWLER CRANE

POWERING EFFICIENCY WITH ZERO EMISSIONS **SCE1000TB-EV**



100 t



206 kW



282 kWh



618 V



31 t



14 t



5.095 m / 4.29 m / 3.485 m





- + Zero emission, environmentally friendly and energy-saving.
- + Large capacity battery of ultra long range.
- + New smart cab of optimal operator comfort.
- + Lower operational cost with globally standard transport solution.
- + Self dis/assembly system, retractable crawlers, higher efficiency.

ELECTRIC MOTOR
Danfoss

MAIN PUMP
Danfoss

MAIN VALVE
Danfoss

REDUCER
Rexroth

H

Max. lifting capacity: 100 t

Max. lifting moment: 360 t·m

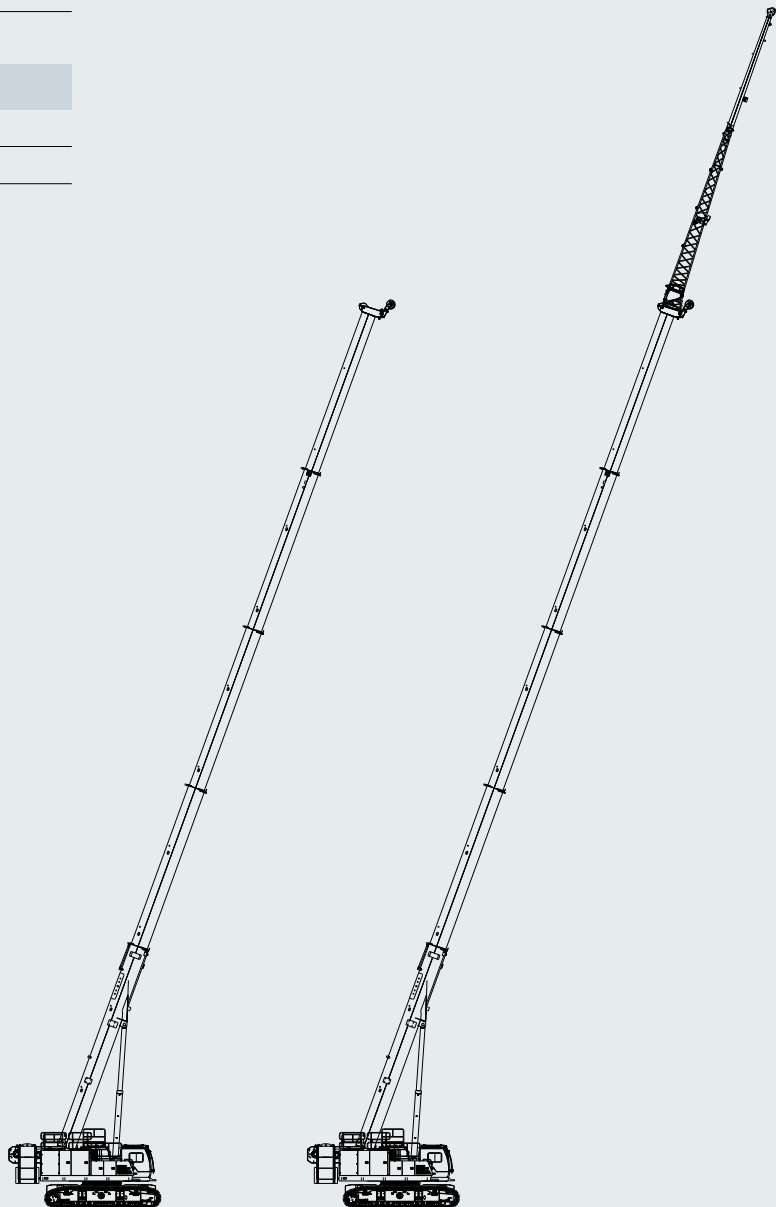
Boom length: 49.9 m

FJ

Max. lifting capacity: 6.2 t

Jib length: 10.2 m / 17.5 m

Longest boom + longest jib: 49.9 m + 17.5 m



H

FJ

TELESCOPIC CRAWLER CRANE

UNMATCHED POWER, SMART EFFICIENCY **SCE1500TB**



150 t



242 kW / 1800 rpm



36 t



10 t



3.97 m / 4.92 m / 5.84 m



- + Stronger lifting capacities in its class.
- + Basic machine transport width 3.4 m, height 3.3 m, satisfying European transport standard.
- + Self dis/assembly for whole machine.
- + Highly adaptable with load charts of variable counterweights, track gauges, and 4° gradient.
- + The 3rd Gen smart control system with 12.8" touch screen, intuitive and convenient.

ENGINE

Cummins

MAIN PUMP

Danfoss

MAIN VALVE

Danfoss

REDUCER

Rexroth

H

Max. lifting capacity: 150 t

Max. lifting moment: 480 t·m

Boom length: 59.9 m

FJ

Max. lifting capacity: 6.5 t

Jib length: 9.4 m / 15.5 m

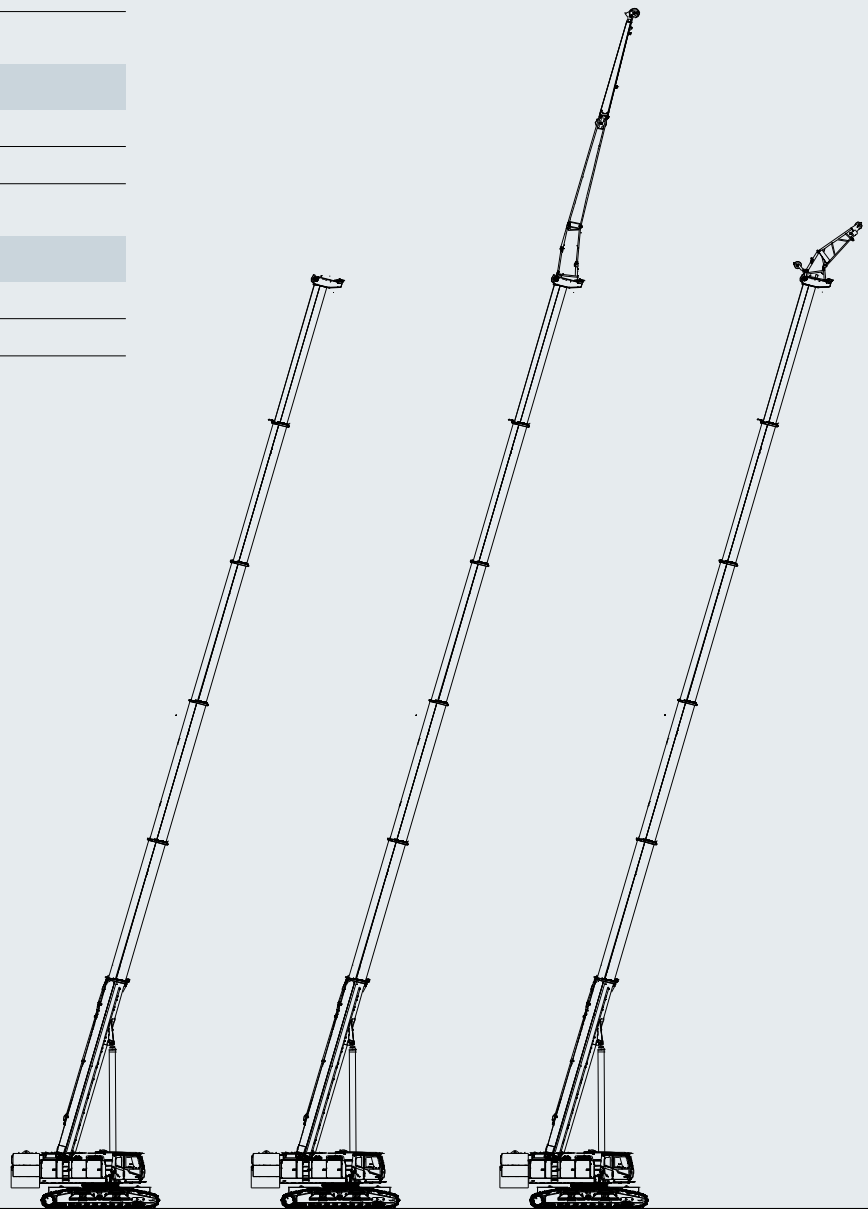
Longest boom + longest jib: 59.9 m + 15.5 m

FJh

Max. lifting capacity: 35.6 t

Jib length: 3 m

Longest boom + longest jib: 59.9 m + 3 m



H

FJ

FJh

TELESCOPIC CRAWLER CRANE

ECO-POWER UNLEASHED

ULTIMATE EFFICIENCY AND ENDURANCE **SCE1500TB-EV**



150 t



206 kW



282 kWh



618 V



46 t



10 t



5.85 m / 4.92 m / 3.99 m





- + Zero emission, environmentally friendly and energy-saving.
- + With a 282 kWh high-capacity power battery, the endurance exceeds 8 hours (European working conditions).
- + Low operating costs, it reduces operating costs by 45 % compared to traditional fuel-powered models and eliminates engine maintenance expenses.
- + Intelligent safety, it features a high-voltage safety design with real-time insulation monitoring through the Battery Management System (BMS). In the event of a sudden electrical leakage, it can proactively disconnect the high voltage. The charging port includes an electronic lock. The third-generation intelligent control system offers one-touch start/stop functionality and a 10.1-inch touchscreen display for smart and convenient operation.
- + Multiple Charging Modes:
 DC Fast Charging: Supports a maximum of 240 kW DC fast charging, allowing for a quick charging time of as little as 2 hours.
 Multiple AC Power Charging: The AC charger is compatible with various power levels, including 10 kW, 20 kW, 40 kW, and optionally 80 kW, making it suitable for different types of distribution boxes.
 Operation with charging plug in, meeting the diverse needs of customers across various operational scenarios.

ELECTRIC MOTOR

Danfoss

MAIN PUMP

Danfoss

MAIN VALVE

Danfoss

REDUCER

Rexroth

H

Max. lifting capacity: 150 t

Max. lifting moment: 480 t·m

Boom length: 59.9 m

FJ

Max. lifting capacity: 6.5 t

Jib length: 9.4 m / 15.5 m

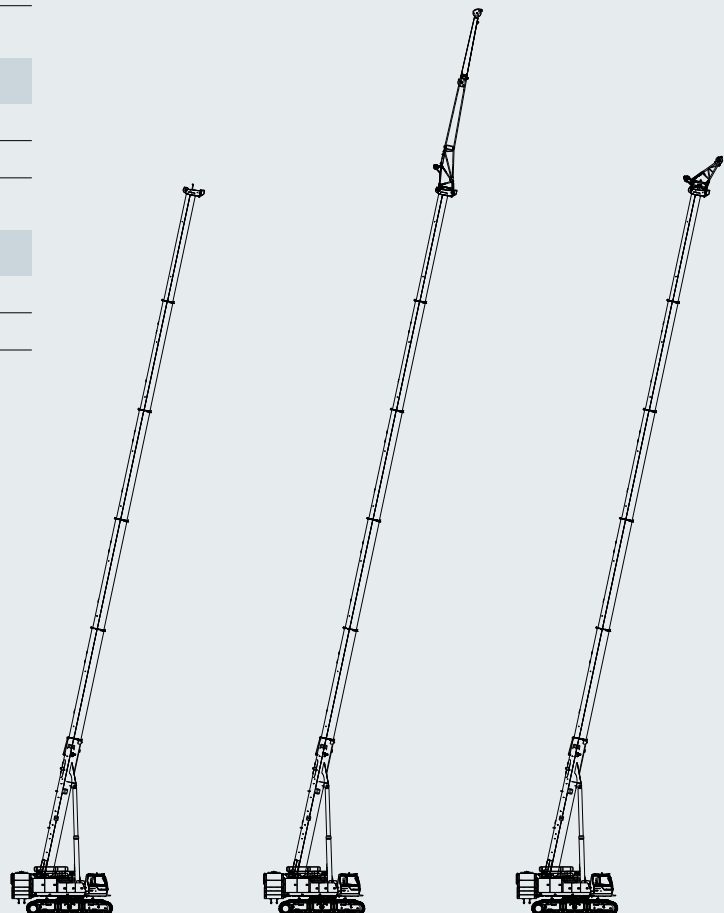
Longest boom + longest jib: 59.9 m + 15.5 m

FJh

Max. lifting capacity: 35.6 t

Jib length: 3 m

Longest boom + longest jib: 59.9 m + 3 m



H

FJ

FJh

TELESCOPIC CRAWLER CRANE

SMART CONTROL, SEAMLESS TRANSPORT **SCE2500TB**



250 t



242 kW / 1800 rpm



60 t



20 t



5.20 m / 6.28 m / 7.35 m



- + Stronger lifting capacities in its class.
- + Basic machine transport width 3 m, height 3.3 m, satisfying European transport standard.
- + Self dis/assembly for whole machine.
- + Highly adaptable with load charts of variable counterweights, track gauges, and 4° gradient.
- + The 3rd Gen smart control system with 10.1" touch screen, intuitive and convenient.

ENGINE

Cummins

MAIN PUMP

Danfoss

MAIN VALVE

SANY

REDUCER

Zhuzhou Gear

H

Max. lifting capacity: 250 t

Max. lifting moment: 860 t·m

Boom length: 14.4 m ~ 75.4 m

FJ

Max. lifting capacity: 10.5 t

Jib length: 11.2 m ~ 43 m

Longest boom + longest jib: 70.7 m + 43 m

FJh

Max. lifting capacity: 42 t

Jib length: 3 m

Longest boom + longest jib: 75.4 m + 3 m



H

FJ

FJh

COMPACT AND FLEXIBLE **SAC600E**



60 t



50 m



16 m



280 kW / 1600 rpm



13 t



- + One-click telescopic boom technology.
- + Variable outrigger span technology.
- + Anti-electromagnetic interference module.
- + Counterweight recognition function.
- + Automatic installation and removal of counterweight.
- + Wireless remote control for all operation movements.
- + New-generation cabs designed for European and American market needs.

ENGINE
Benz

AXLES
Kessler

TRANSMISSION
Allison

MAIN VALVE / PUMP
Danfoss

T

Max. lifting capacity: 60 t
Max. boom length: 50 m
Max. lifting radius: 39 m
Max. lifting height: 50.5 m

TJ / TH*

Max. lifting capacity: 7.9 t
Jib length: 9.2 m / 16 m
Max. lifting radius: 44 m
Max. lifting height: 66.5 m

TA*

Max. lifting capacity: 9.1 t
Jib length: 3 m
Max. lifting radius: 40 m
Max. lifting height: 53.5 m

* Optional



T

TJ / TH*

TA*

COMPACT AND FLEXIBLE **SAC700E**



70 t



50 m



16 m



360 kW / 1600 rpm



15 t



- + One-click telescopic boom technology.
- + Variable outrigger span technology.
- + Anti-electromagnetic interference module.
- + Counterweight recognition function.
- + Automatic installation and removal of counterweight.
- + Wireless remote control for all operation movements.
- + New-generation cabs designed for European and American market needs.

ENGINE
Benz

AXLES
Kessler

TRANSMISSION
ZF Traxon

MAIN VALVE / PUMP
Danfoss / Rexroth

T

Max. lifting capacity: 70 t

Max. boom length: 50 m

Max. lifting radius: 40 m

Max. lifting height: 50.5 m

TJ / TH*

Max. lifting capacity: 8 t

Jib length: 9.6 m / 16 m

Max. lifting radius: 46 m

Max. lifting height: 66.5 m

TA*

Max. lifting capacity: 9.1 t

Jib length: 3 m

Max. lifting radius: 40 m

Max. lifting height: 53.5 m

* Optional



T

TJ / TH*

TA*

STRONG AND EFFICIENT **SAC900E**



90 t



60 m



16 m



360 kW / 1600 rpm



22.5 t



- + One-click telescopic boom technology.
- + Variable outrigger span technology.
- + Anti-electromagnetic interference module.
- + Counterweight recognition function.
- + Automatic installation and removal of counterweight.
- + Wireless remote control for all operation movements.
- + New-generation cabs designed for European and American market needs.

ENGINE
Benz

AXLES
Kessler

TRANSMISSION
ZF Traxon

T

Max. lifting capacity: 90 t

Max. boom length: 60 m

Max. lifting radius: 54 m

Max. lifting height: 60.5 m

TJ

Max. lifting capacity: 6.2 t

Jib length: 16 m

Max. lifting radius: 60 m

Max. lifting height: 76.5 m



T

TJ

ALL-TERRAIN CRANE

STRONG AND EFFICIENT SAC1200E



120 t



66 m



24 m



360 kW / 1600 rpm



150 kW / 1800 rpm



33 t



- + Double engine system with reduced operation fuel consumption.
- + One-click telescopic boom technology.
- + Variable outrigger span technology.
- + Anti-electromagnetic interference module.
- + Counterweight recognition function.
- + Automatic installation and removal of counterweight.
- + Wireless remote control for all operation movements.
- + New-generation cabs designed for European and American market needs.

CHASSIS ENGINE
Benz

CRANE ENGINE
Benz

AXLES
Kessler

TRANSMISSION
ZF Traxon

MAIN VALVE / PUMP / MOTOR
Rexroth

T

Max. lifting capacity: 120 t

Max. boom length: 66 m

Max. lifting radius: 52 m

Max. lifting height: 66 m

TJ* / TH*

Max. lifting capacity: 7 t

Jib length: 17 m

Max. lifting radius: 58 m

Max. lifting height: 83 m

TEJ* / TEH*

Max. lifting capacity: 6.1 t

Jib length: 24 m

Max. lifting radius: 60 m

Max. lifting height: 90 m

TA*

Max. lifting capacity: 29.1 t

Jib length: 2.9 m

Max. lifting radius: 54 m

Max. lifting height: 69 m

* Optional



STRONG AND EFFICIENT SAC1500E



150 t



66 m



19 m* / 26 m*



390 kW / 1600 rpm



45 t



- + One-click telescopic boom technology.
- + Variable outrigger span technology.
- + Counterweight recognition function.
- + Anti-electromagnetic interference module.
- + Automatic installation and removal of counterweight.
- + Wireless remote control for all operation movements.
- + New-generation cabs designed for European and American market needs.
- + Blind Spot Information System and Moving Off Information System to monitor and alert pedestrians and cyclists on the passenger side and in front of the crane.

ENGINE
Benz

AXLES
Kessler

TRANSMISSION
ZF Traxon

T

Max. lifting capacity: 150 t

Max. boom length: 66 m

Max. lifting radius: 62 m

Max. lifting height: 66.5 m

TJ* / TH*

Max. lifting capacity: 18.5 t

Jib length: 10.8 m / 19 m

Max. lifting radius: 70 m

Max. lifting height: 84.5 m

TEJ* / TEH*

Max. lifting capacity: 15.3 t

Jib length: 17.8 m / 26 m

Max. lifting radius: 72 m

Max. lifting height: 92 m

TA

Max. lifting capacity: 34.9 t

Jib length: 2.9 m

Max. lifting radius: 64 m

Max. lifting height: 68.5 m

* Optional



CE

MAXIMIZED PERFORMANCE AND RELIABILITY **SAC2500E**



250 t



75 m



43 m



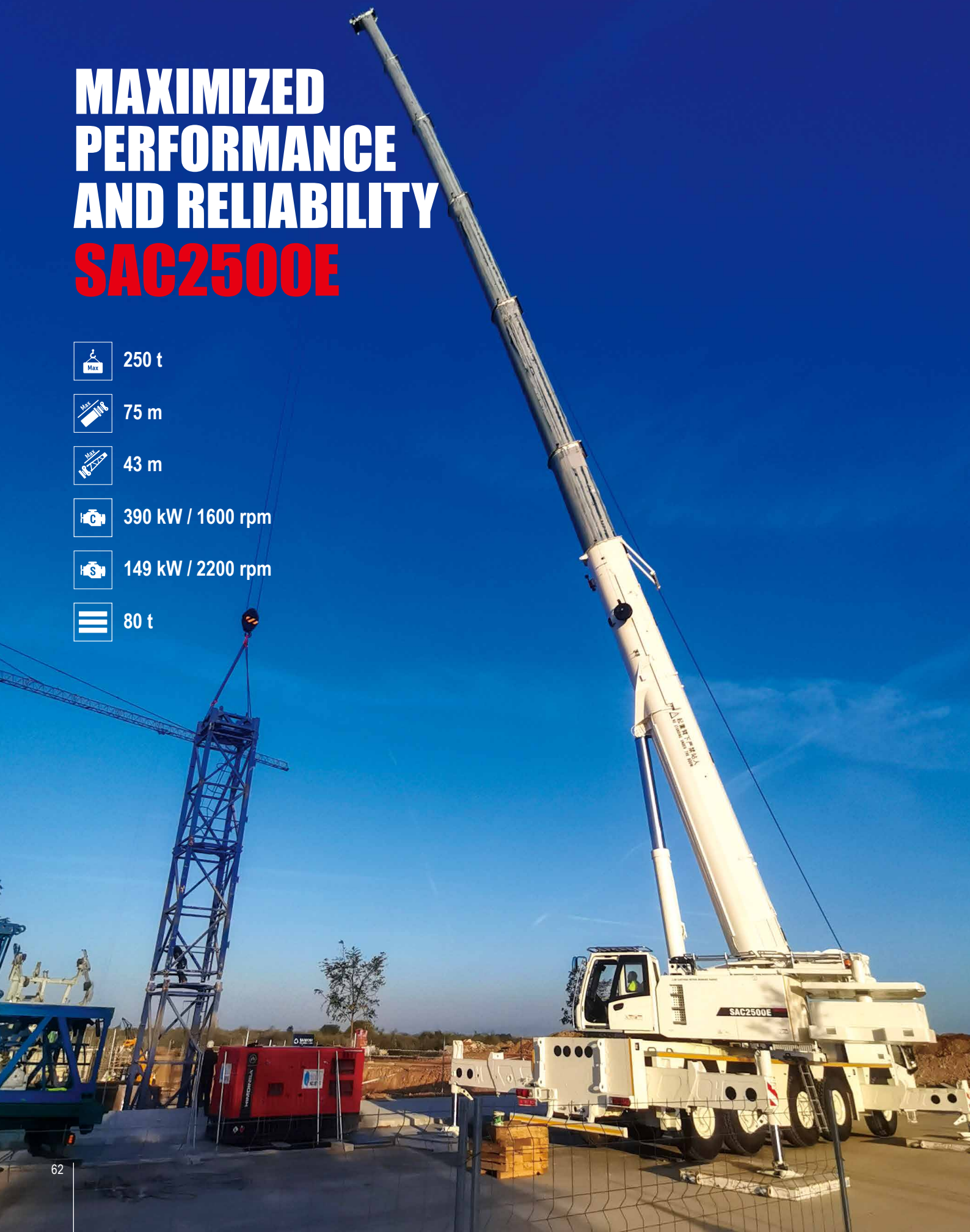
390 kW / 1600 rpm



149 kW / 2200 rpm



80 t



- + Double engine system with reduced operation fuel consumption.
- + One-click telescopic boom technology.
- + Variable outrigger span technology.
- + Anti-electromagnetic interference module.
- + Counterweight recognition function.
- + Automatic installation and removal of counterweight.
- + Wireless remote control for all operation movements.
- + New-generation cabs designed for European and American market needs.

CHASSIS ENGINE
Benz

CRANE ENGINE
Cummins

AXLES
Kessler

TRANSMISSION
ZF Traxon

MAIN VALVE / PUMP / MOTOR
Rexroth

T

Max. lifting capacity: 250 t

Max. boom length: 75 m

Max. lifting radius: 72 m

Max. lifting height: 74 m

TJ* / TH*

Max. lifting capacity: 14.6 t

Jib length: 11.2 m / 20 m

Max. lifting radius: 82 m

Max. lifting height: 93 m

TEJ / TEH*

Max. lifting capacity: 11 t

Jib length: 19.2 m / 28 m / 27.2 m / 36 m / 43 m

Max. lifting radius: 82 m

Max. lifting height: 111 m

* Optional



ROUGH-TERRAIN CRANE

OPTIMAL OFF-ROAD AGILITY **SRE450**



45 t



35 m



16 m



209 kW / 2200 rpm



4.5 t



- + Stronger lifting capacities suitable for more applications.
- + Higher stability with outrigger span 7.2 m × 7.2 m.
- + Higher working speed and efficiency.
- + Luffing cylinder hinge rearward positioned for better view.
- + New generation cab with smart LMI interface, user-friendly and comfortable.
- + MachineLink + cloud system for better monitoring and fleet management.

ENGINE

Cummins

AXLES

Meritor

TRANSMISSION

Dana

T (on outriggers)

Max. lifting capacity: 45 t

Max. boom length: 35 m

Max. lifting radius: 32 m

Max. lifting height: 35.3 m

TJ (on outriggers)

Max. lifting capacity: 4 t

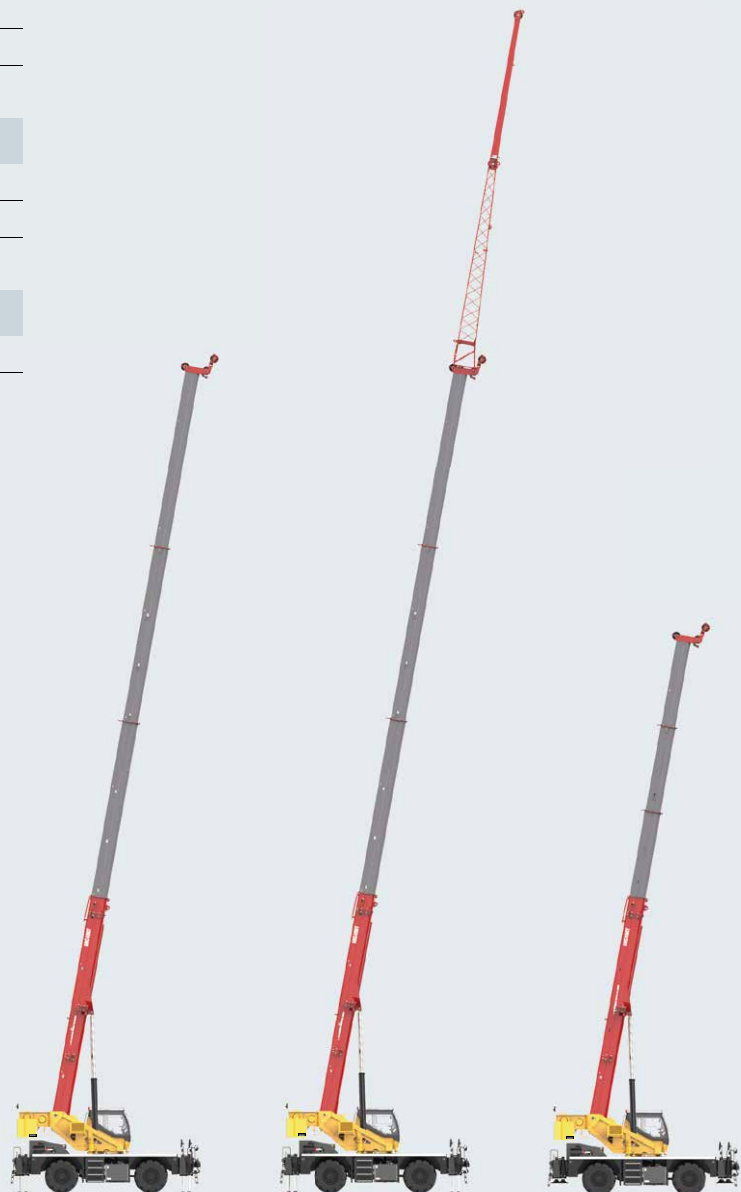
Jib length: 9.2 m / 16 m

Max. lifting height: 51.5 m

T (on tires)

Max. lifting capacity (stationary): 15.5 t

Max. lifting capacity (pick & carry): 12.5 t



T (on outriggers)

TJ (on outriggers)

T (on tires)

OPTIMAL OFF-ROAD AGILITY **SRE450N**



45 t



37.4 m



8 m



173 kW / 2000 rpm



5.5 t



- + The overall width is less than 2.55 m, meeting European transport width requirements. This reduces customer operating costs and enhances transfer efficiency.
- + For the first time, a wireless remote control is used to operate the outriggers, boom telescoping, jib pushing & pulling, and slewing.
- + Hydraulic power-assisted jib deployment, handled by one person using a remote controller within 15 minutes.
- + A new measurement and calculation method improves the accuracy of outrigger force detection, preventing crane overturning accidents and enhancing safety.
- + A newly upgraded operator's cab with 10 % more space, added tilt functionality for enhanced safety, reliability, comfort, and convenience.

ENGINE

Cummins

AXLES

Meritor

TRANSMISSION

Dana

T (on outriggers)

Max. lifting capacity: 45 t

Max. boom length: 37.4 m

Max. lifting radius: 35 m

Max. lifting height: 40.1 m

TJ (on outriggers)

Max. lifting capacity: 3.2 t

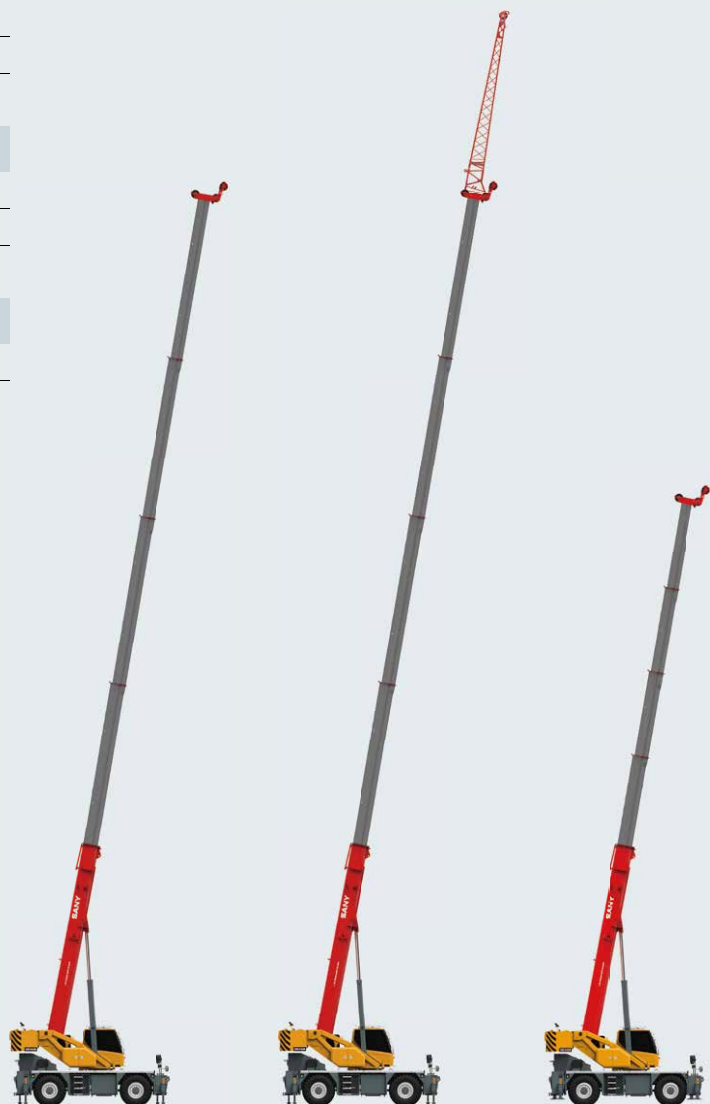
Jib length: 8 m

Max. lifting height: 48 m

T (on tires)

Max. lifting capacity (stationary): 16 t

Max. lifting capacity (pick & carry): 10 t



T (on outriggers)

TJ (on outriggers)

T (on tires)

ROUGH-TERRAIN CRANE

HIGH PERFORMANCE, HIGH RELIABILITY **SRE600**



60 t



45.5 m



16 m



209 kW / 2200 rpm



6.4 t



- + Higher stability with outrigger span 7.5 m × 7.4 m.
- + U shape boom profile, featuring lightweight and strong capacity.
- + Higher working speed and efficiency to boost productivity.
- + New generation cab with smart LMI interface, user-friendly and carefree.
- + Cab 0~20° tiltable, observing load at heights at ease.
- + MachineLink+ cloud system for better monitoring and fleet management.

ENGINE

Cummins

AXLES

Meritor

TRANSMISSION

ZF

T (on outriggers)

Max. lifting capacity: 60 t

Max. boom length: 45.5 m

Max. lifting radius: 34 m

Max. lifting height: 46 m

TJ (on outriggers)

Max. lifting capacity: 4 t

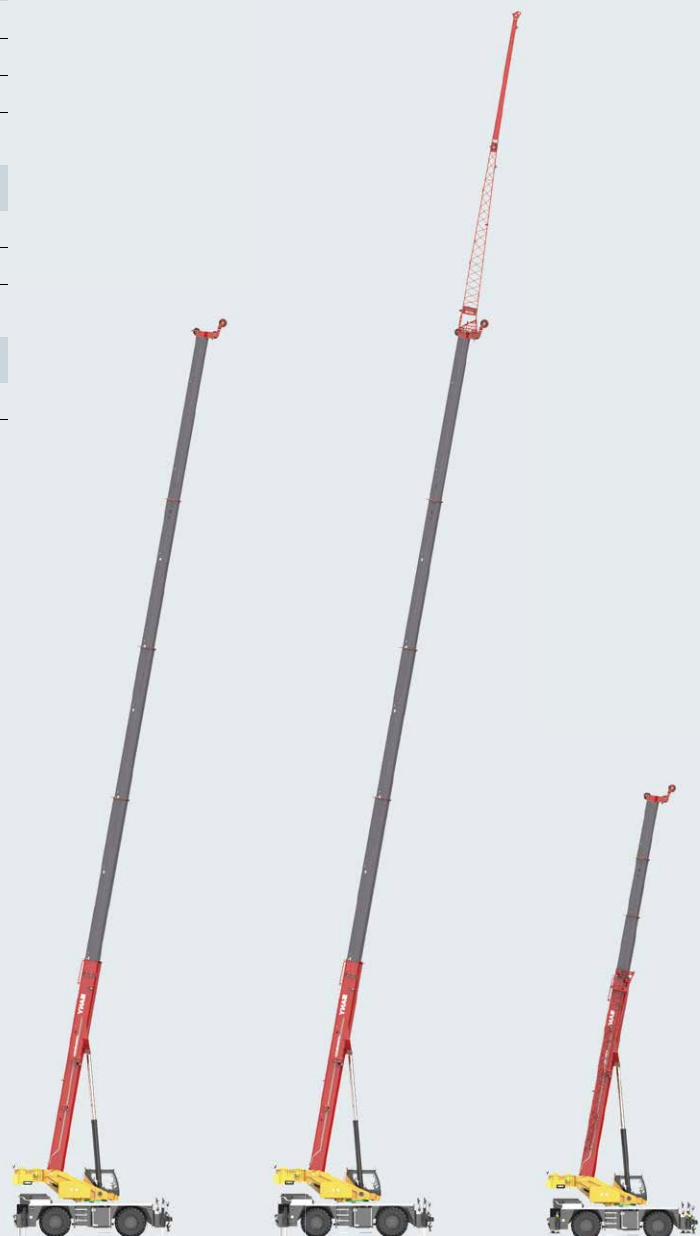
Max. boom + jib length: 45.5 m + 16 m

Max. lifting height: 62 m

T (on tires)

Max. lifting capacity (stationary): 22 t

Max. lifting capacity (pick & carry): 18 t



T (on outriggers)

TJ (on outriggers)

T (on tires)

FOCUS ON VOICE FROM THE MARKET **SRE900**



90 t



47 m



18 m



209 kW / 2200 rpm



9.5 t



- + New generation cab with smart LMI interface, user-friendly and carefree.
- + Capable of working in desert, oil field, refinery, saline land and other harsh environments.
- + Electronically controlled load-sensing hydraulic system, featuring precise and responsive control.
- + Two work modes ensuring high working efficiency and strong driving ability.
- + Robust power train boosting working flexibility and productivity.

ENGINE

Cummins

AXLES

Meritor

TRANSMISSION

Dana

T (on outriggers)

Max. lifting capacity: 90 t

Max. boom length: 47 m

Max. lifting radius: 38 m

Max. lifting height: 47.5 m

TJ (on outriggers)

Max. lifting capacity: 6 t

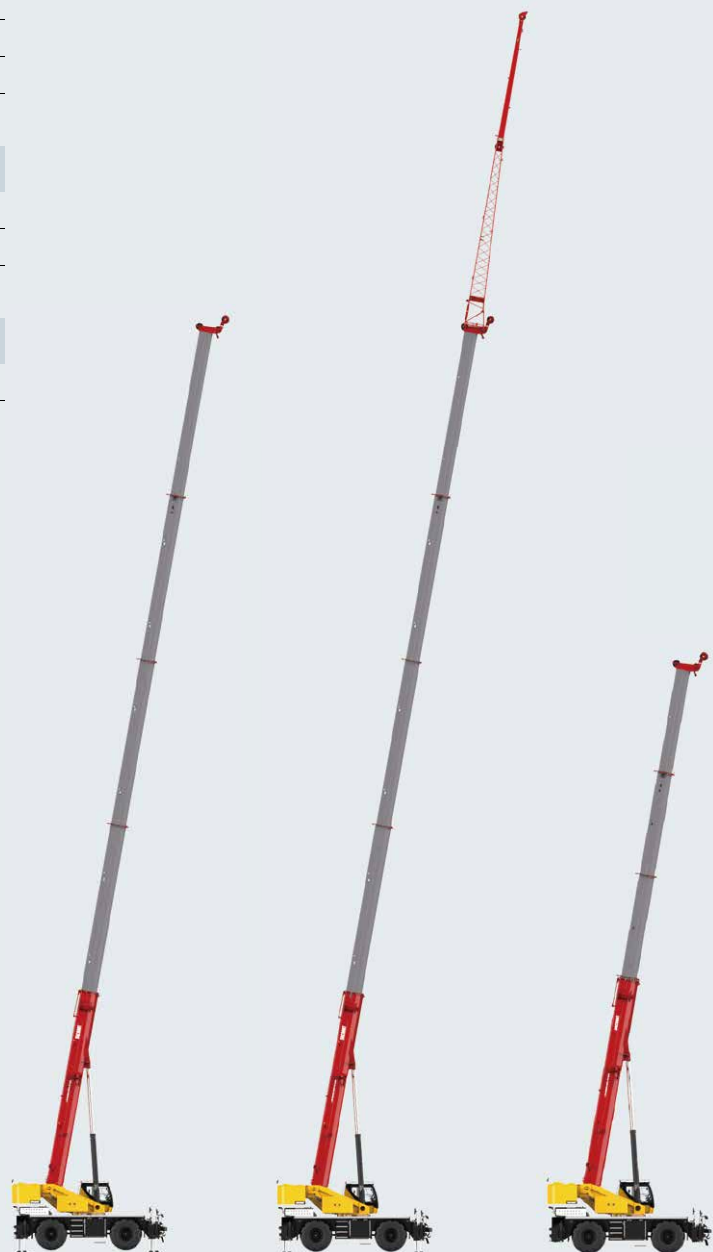
Max. boom + jib length: 47 m + 18 m

Max. lifting height: 65.5 m

T (on tires)

Max. lifting capacity (stationary): 22.4 t

Max. lifting capacity (pick & carry): 14.3 t



T (on outriggers)

TJ (on outriggers)

T (on tires)

STRONG AND SMART SRE1100



110 t



51 m



18 m



209 kW / 2200 rpm



13.5 t



- + Powerful lifting capacity with 3380 kN.m maximum lifting moment and 1740 kN.m on full-extension boom, leading in its class.
- + Higher working speed and efficiency to boost productivity.
- + New generation cab with smart LMI interface, 0~20° tiltable, user-friendly and carefree.
- + MachineLink + cloud system for better monitoring and fleet management.

ENGINE

Cummins

AXLES

Meritor

TRANSMISSION

Dana

T (on outriggers)

Max. lifting capacity: 110 t

Max. boom length: 51 m

Max. lifting radius: 40 m

Max. lifting height: 51.5 m

TJ (on outriggers)

Max. lifting capacity: 5.4 t

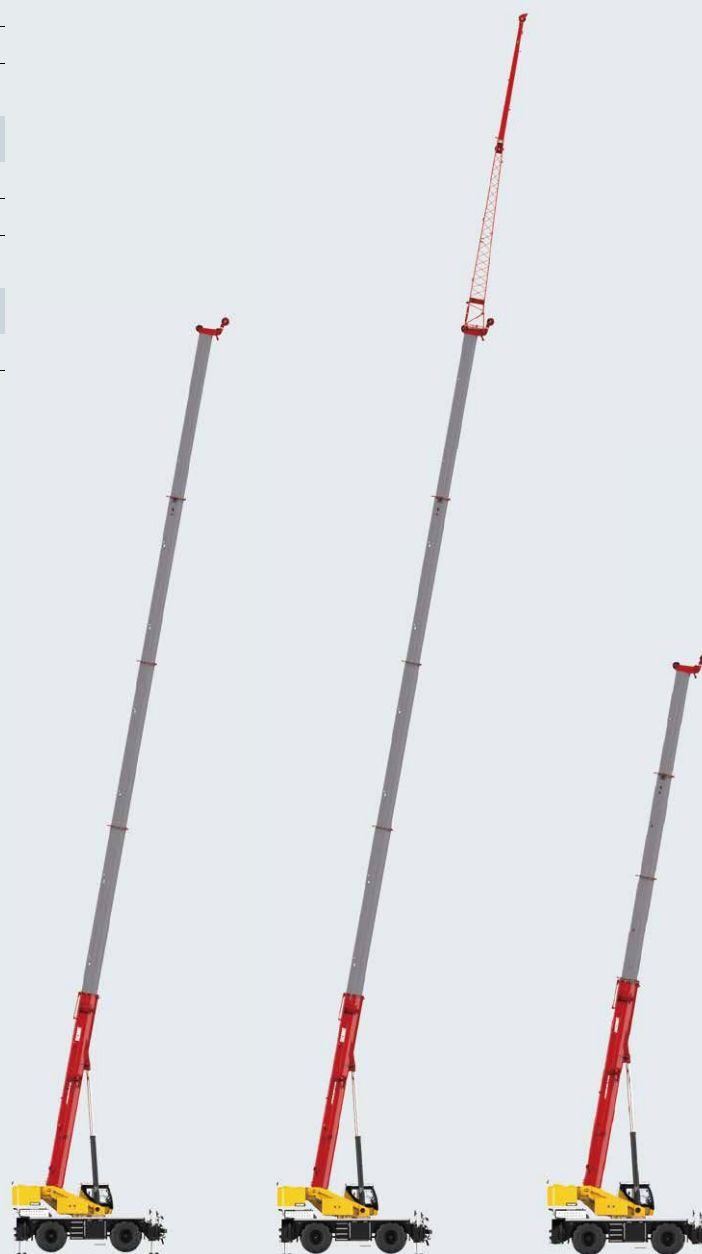
Max. boom + jib length: 51 m + 18 m

Max. lifting height: 69.5 m

T (on tires)

Max. lifting capacity (stationary): 22.2 t

Max. lifting capacity (pick & carry): 15 t



T (on outriggers)

TJ (on outriggers)

T (on tires)

STRONG AND SMART SRE1300



130 t



60 m



18.7 m



209 kW / 2200 rpm



23 t



- + Higher working speed and efficiency to boost productivity.
- + Operator's cab with smart LMI interface, 0~20° tiltable, user-friendly and carefree.
- + Self-removable counterweight.
- + Hydraulic power-assisted jib deployment, handled by one person using a remote controller within 15 minutes.

ENGINE
Cummins

AXLES
Meritor

TRANSMISSION
Dana

T (on outriggers)

Max. lifting capacity: 130 t

Max. boom length: 60 m

Max. lifting radius: 52 m

Max. lifting height: 60.5 m

TJ (on outriggers)

Max. lifting capacity: 5.5 t

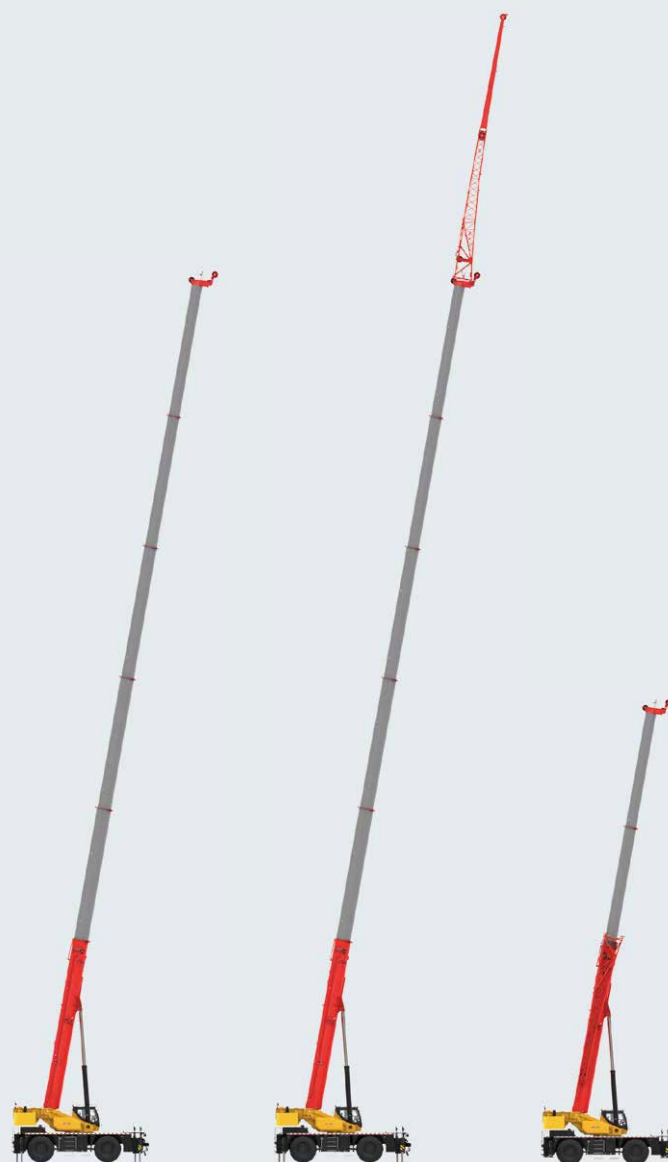
Jib length: 18.7 m

Max. lifting height: 79.2 m

T (on tires)

Max. lifting capacity (stationary): 30 t

Max. lifting capacity (pick & carry): 18 t



T (on outriggers)

TJ (on outriggers)

T (on tires)

TRUCK-MOUNTED CRANE

ADAPTABLE AND VERSATILE **SPC500E**



50 t



35 m



8 m



7.8 t



- + Strong lifting capacity suitable for urban construction.
- + Compatible with more commercial chassis.
- + Counterweight self loading and unloading, safe and efficient.
- + Being able to travel with total counterweight.
- + Efficient hydraulic system, energy saving.

PUMP
CASAPPA

MOTOR
Kawasaki

CONTROLLER
IFM

T

Max. lifting capacity: 50 t

Max. boom length: 35 m

Max. lifting radius: 32 m

Max. lifting height: 36.1 m

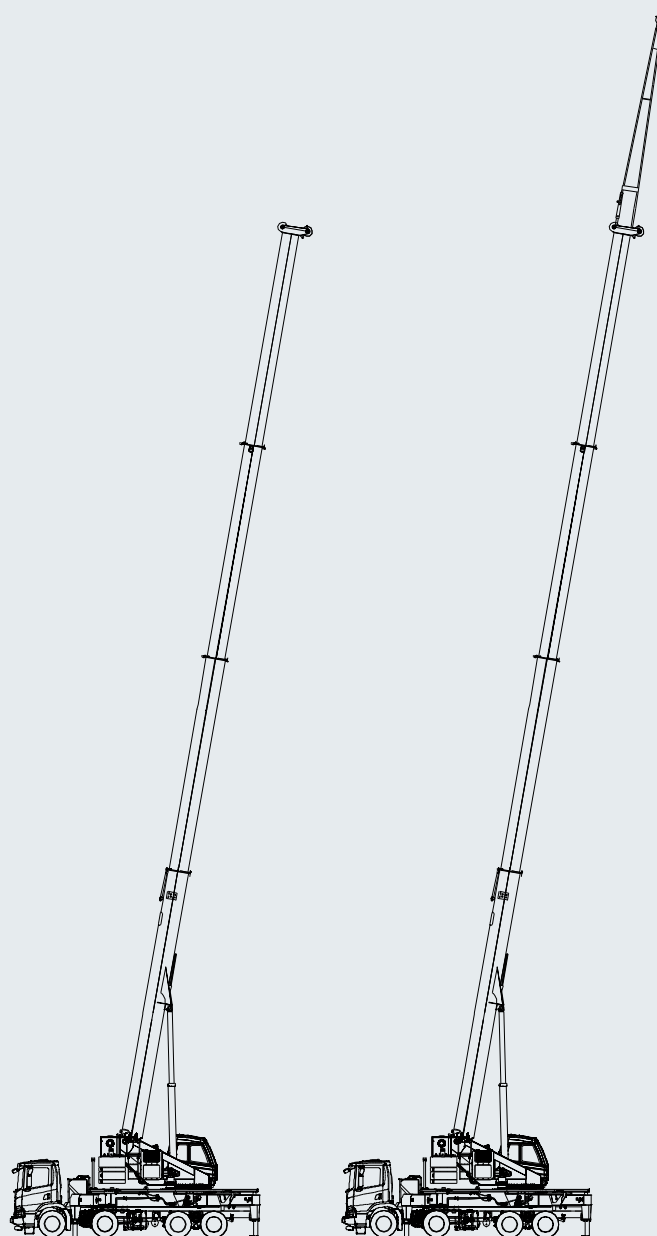
TJ

Max. lifting capacity: 2.8 t

Jib length: 8 m

Max. lifting radius: 27.6 m

Max. lifting height: 43.9 m



T

TJ



MOBILE ENERGY STORAGE SPL210



Capacity
210 kWh



Weight
2750 kg



One-to-many maximum output
100 kW



Length×width×height
2572×1500×1829 mm



Working temperature
-20°C~45°C



- + CATL high-security lithium iron phosphate battery 210 kWh, zero emissions, compliant with local emission regulations.
- + Compatible with various plugs: 16A / 32A / 63A / 125A.
- + Capable of simultaneous charging and discharging, with DC charge time within 2 hours at room temperature.
- + Supporting one-to-many simultaneous discharging with maximum output power 100 kW.
- + Transportable by trailers/forklifts/cranes, etc.
- + Can be installed on a mobile trailer and towed by conventional road vehicles, or installed inside a container for transport.
- + Real-time intelligent monitoring of device location and operational data can be achieved through the application.
- + Intelligent charging and scheduled charging function improves convenience and flexibility in device usage. Scheduling appropriate charging times effectively reduces charging costs, ensuring that devices remain in optimal condition at all times and avoiding damage to the batteries caused by prolonged charging.
- + IP54 protection, C6F12O fire suppression system. AC/DC output, overvoltage & undervoltage protection.

PERFORMANCE

CATEGORY	ITEM	VALUE
WEIGHT & DIMENSION	Weight	2750 kg
	Length×width×height	2572 mm × 1500mm × 1829 mm (Can be mounted on a trailer)
BASIC PARAMETERS	Basic functions	DC input (European standard), AC input, AC output, simultaneous charging and discharging, one-to-many outputs, intelligent replenishment, remote control
	Operation mode	Touchscreen / Mobile / PC Control
BATTERY	Type	Lithium Iron Phosphate (LFP)
	Capacity	210 kWh
	Battery cooling	Liquid cooling
	One-to-many maximum output	100 kW
OPERATION	Single-gun output power	6.6 kW (230 V), 10 kW / 20 kW / 40 kW / 80 kW (400 V)
	AC input power	6.6 kW (230 V), 20 kW / 40 kW (400 V)
	AC output form	Three-Wire Five-System (with Neutral and Ground)
	Max. DC input	120 kW
	Protection Level	IP54
USAGE	Working temperature	-20°C~45°C
	Storage temperature	-20°C~60°C
	Working environment humidity	5~90 %
	Electrical isolation	AC output: non-isolated / AC input: isolated
	Fire suppression system	Integrated automatic & manual C6F12O / aerosol fire suppression system

CODE / ICON DESCRIPTION

CRAWLER CRANE

H	Main boom
FJ	Fixed jib
LJ	Luffing jib
HJ	Mixed boom
D	Superlift mast
B	Superlift counterweight
ZHJ	Mixed power boom
FJh	Heavy-duty fixed jib

WHEEL CRANE

T	Telescopic boom
J	Fixed jib
E	Boom extension
H	Hydraulically adjustable jib
A	Auxiliary jib



Max. lifting capacity



Engine



Rear counterweight



Carbody counterweight



Superlift counterweight



Track gauge (center point)



Track gauge (margin)



Electric motor



Battery capacity



Battery voltage



Max. boom length



Max. fixed jib length



Chassis engine



Superstructure engine



Full counterweight



Length×width×height



Working temperature

SANY GROUP CRANE BU

SANY Mobile Crane and Tower Crane Industrial Park

No.168 Jinzhou Avenue, Jinzhou Development Zone, Changsha City, Hunan Province, P.R. China Zip 410600

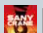



SANY Crawler Crane Industrial Park

No. 2188 Daishan Road, Wuxing District, Huzhou City, Zhejiang Province, P. R. China Zip 313028

Consulting sanycrane@sanygroup.com (Crane BU) / crd@sany.com.cn (IHQ)

After-sales Service 0086-400 609 8318 (Overseas)

 SANY GROUP: www.sanyglobal.com | SANY USED CRANE: sanyusedcranes.en.alibaba.com

SANY CRANE   YouTube [@sanycrane4878](https://www.youtube.com/@sanycrane4878) |  Sany-crane |  SANYCraneGlobal

Reminder:

Any change in the technical parameters and configuration due to product modification or upgrade may occur without prior notice.
The machine in the picture may include additional equipment. This brochure is for reference only, and goods in kind shall prevail.
Copyright at SANY. No part of this brochure may be copied or used for any purpose without written approval from SANY.

© Edited in February 2025

SANY

Quality Changes the World

