

REACHSTACKER
DIESEL PORTFOLIO

SANY

Quality Changes the World



MEETING CHALLENGES WITH EFFICIENCY

RELIABLE. ECONOMICAL. PRODUCTIVE.



**SANY REACHSTACKER
DIESEL PORTFOLIO**

ABOUT US

SANY Europe is part of the SANY Group, a leading global leading manufacturer of construction machinery, port equipment and wind turbines based in Changsha, China.

We always strive to deliver customised products to the national markets, characterised by their high-performance, innovative technology. Thus, each of these models is specially developed for the European market.

With our own steel construction and spreader production, SANY has the world's largest production of reachstackers. Integrated with a powerful Europe-wide dealer network, that competently supports local users with regard to sales, service and maintenance.



Table of contents

P. 2	Overview reachstacker portfolio
P. 4	Top features
P. 6	Top highlights
P. 10	H9 Hybrid Version
P. 11	Axle loads
P. 12	Technical specifications / Turning radius
P. 14	Dimensions
P. 15	Spreader
P. 16	Load diagrams
P. 22	Equipment

FULL POWER – FULL SCOPE

SANY reachstackers master every task in container handling. With their impressive load capacity, long reach and robust design, they are reliable guarantors in the port. Powerful drives, a compact design and sophisticated container positioning during travel make maneuvering easier, even in narrow aisles - ensuring a high handling speed.

Users benefit from the large portfolio of SANY diesel reachstackers. As specialists or all-rounders, the machines are precisely tailored to the respective tasks. In addition to diesel drives, hybrid drives for even greater fuel efficiency and a fully electric reachstacker are also available.



ECONOMICAL

Newly developed efficient drive train achieves significant fuel savings

PRECISE

Precise joystick control and ergonomically arranged controls for productive work

SAFE

Numerous safety systems to support the operator

COMPACT

Clear dimensions for quick maneuvering, even in tight spaces

EFFICIENT

High handling capacity

STABLE

Robust design for maximum service life

CLEVER

Perfectly coordinated hydraulic and electronic system

SIMPLE

Large maintenance flaps on the side of the machine for easy service checks

COMFORT

EXCELLENT OPERATION

The performance of the SANY reachstacker is also evident behind the steering wheel: the cab offers plenty of comfort. This includes air conditioning and the Grammer Actimo XL comfort seat, which guarantees pleasant and fatigue-free sitting thanks to its excellent vibration comfort. The sound insulation of the cab exceeds the requirements of the strictest industry standards and makes the working environment even more comfortable. All machine controls are grouped together on the control console on the right-hand armrest and steering wheel column, making them easily accessible.



EASE OF USE

Precision in the blink of an eye

The multi-function joystick from premium European supplier can be controlled with particular precision, allowing you to work accurately and efficiently in any situation. For example, it enables several hydraulic commands to be issued simultaneously and supports precise control for fast cycle times. The joystick is connected to a safety CAN bus.

Electronic monitoring of the load torque ensures that the limits of the load diagram are adhered to. The angle of the boom and the telescoping with the actual load on the spreader are taken into account. If the limit values are approached, the control system reduces the speed of movement, warns the driver and prevents the load limits from being exceeded.



TESTIMONIAL

TOP CUSTOMER FEEDBACK



„WHAT STOOD OUT PARTICULARLY POSITIVELY IN THE COLLABORATION WITH SANY WAS THEIR OPENNESS TO OUR FINE-TUNING IN ORDER TO ADAPT THE REACHSTACKERS PRECISELY TO OUR NEEDS.“

TESTIMONIAL

Why SSB Cargo AG relies on SANY as a strong partner

„We also opted for the SRSC45G5-P because we had already gained experience with a similar SANY machine at one of our sites. The feedback from our colleagues there was overwhelmingly positive. The large, easy-to-read display is very helpful for keeping an eye on the weight and boom position. The spacious cab was highlighted, as was the reversing camera. It provides a clear image and the distance markings are very accurate, which makes work much easier - a small detail, but one that makes a big difference in everyday use.“

Initially, we had specific customisation requests such as a grease trap and a sun visor for the indicator lights. These were retrofitted quickly and easily. SANY also implemented the front access with handrail without any problems. This makes it easy to get on and off and extends the field of vision, especially in intermodal use. Together with our long-standing local partner, the entire process ran smoothly. The overall package was just right for us.“

Armin Fischer
Terminal Manager – SBB Cargo AG





FLEET MANAGEMENT SYSTEM

360° VIEW ON YOUR MACHINES

MACHINE DATA IN REAL TIME, SAFE AND ON ALL MOBILE DEVICES

With regard to Industry 4.0, machines and processes are intelligently networked with each other. SANY has developed e.VISION (EVI for short) exclusively for the European market. The digital fleet management system allows real-time access to all important information about the machines in use. This optimizes production and logistics processes and makes them even more efficient and significantly more profitable.

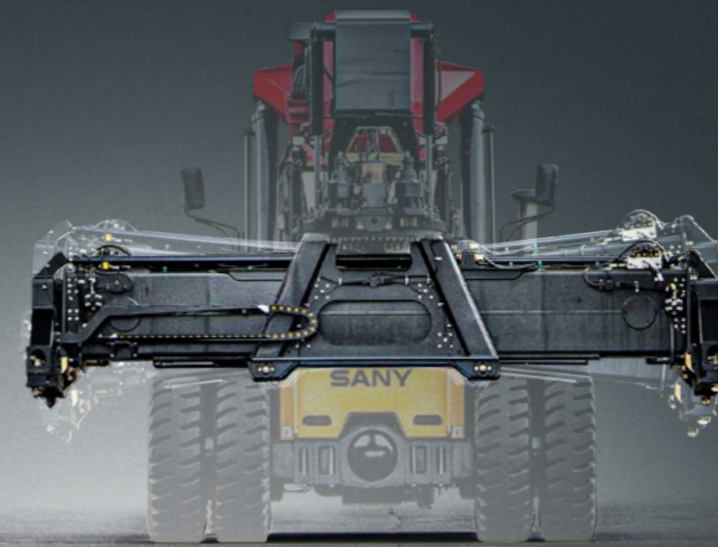


RELIABILITY AND DURABILITY

Central lubrication full of advantages

The functional reliability and service life of reachstackers also depend on reliable maintenance. SANY centralized lubrication systems increase the service life and reduce both lubricant consumption and maintenance costs for the entire fleet. Even hard-to-reach lubrication points are also reliably lubricated for high machine availability and increased productivity.

- + Extended service life of the machine
- + Lower lubricant consumption and lower maintenance costs
- + Less machine downtime and safer working conditions



SAFETY

Powered pile slope

The terrain is not always as level as you would expect for fast and safe relocation of containers. Then the optional Power Pile Slope function with its additional inclination angle of +/- 6° on the spreader ensures stability and control. This makes the processes on difficult terrain significantly safer and allows time-saving lowering even on sloping truck trailers.

- + Better handling of containers on uneven ground
- + Safer operation on difficult terrain
- + Better setting down on inclined truck trailers

SAFETY

Power Damping

How do you combine safety and high handling speed when moving containers? For example, with the Power Damping function from SANY. With this function, containers are picked up at a controlled speed ratio. This increases safety and makes the processes even more economical thanks to faster circulation cycles.

- + Increased handling volume
- + Safe operation at the location
- + Increased productivity and turnover



SAFETY

Safe and precise steering

All SANY reachstackers are equipped with a modern SANY steering axle. This not only allows precise maneuvering, it also ensures a particularly high level of machine stability. As an operator, you can look forward to lower maintenance costs and greater robustness thanks to the synchronous steering cylinder.

- + Greater precision in operation
- + Lower maintenance costs due to fewer parts
- + Greater robustness thanks to synchronous steering cylinder



3 EFFICIENCY BENEFITS!

1 The SANY reach stacker uses a hybrid hydro-pneumatic energy recovery system: energy is stored when lowering the boom and reused directly for lifting (up to 70 kW additional power). Result: lower fuel consumption, faster lifting, and higher handling efficiency.

2 The streamlined mono-frame spreader reduces weight by up to 2,000 kg and lowers torsional loads. A narrower boom head saves an additional 500 kg. Result: less rear ballast required and significantly reduced overall vehicle weight, improving manoeuvrability and efficiency.

3 The new 5-speed gearbox keeps the engine longer in its optimal, fuel-efficient range. Converter lock-up further improves efficiency, while smoother upshifts maintain performance without significant RPM drops.



Advantages of the H9 Hybrid

- + 10 – 23% more container movements per hour
- + 20% fuel saving per container handled
- + Amortisation in just 1 – 2 years



The SANY H9 Hybrid – an excellent choice

When the SANY hybrid reach stacker was launched in 2019, it was given the Innovation Award by the British Forklift Truck Association. One year later, it was honoured by the international IFOY organisation with the IFOY Award (International Intralogistics and Forklift Truck of the Year Award). All award-winning product advantages were carried over to the hybrid reach stacker with the current emissions standard V.



PRODUCTIVITY

Maximize operating times, minimize downtimes

SANY reachstackers prove their reliability in tough practical use worldwide. Within 10 years of use, they achieve more than 50,000 working hours and thus an excellent total operating time. Meanwhile, the downtimes for maintenance, service or repair are extremely low compared to the usable machine hours.



QUALITY

Inner and outer values

All structural components, such as the entire steel construction, the chassis and the outriggers, are manufactured in-house and are subject to strict quality controls. All components in the powertrain, hydraulics and electronics are from renowned European brand manufacturers. This gives users the security of being able to rely on the highest quality down to the last detail.

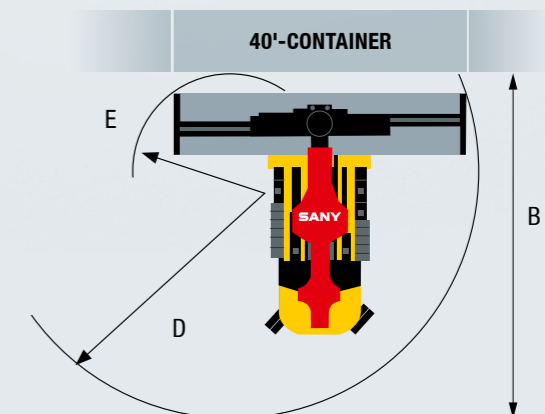
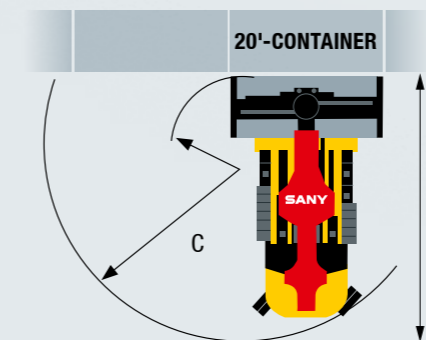
Model		SRSC45G5	SRSC45H9G5	SRSC4535G5	SRSC4535G5-S	SRSC4540G5	SRSC4540G5-S	SRSC4540G5-75
SANY Spreader SDJ450H9								
Total weight	kg	72 500	70 500	75 800	77 700	79 800	81 300	83 000
Axle load without front load		35 000	33 500	35 700	37 100	36 000	37 400	38 500
Axle load without front rear	kg	37 500	37 000	40 100	43 800	43 800	43 900	44 500
Axle load with load at L1 front	kg	101 500	99 700	99 100	99 600	99 600	101 000	111 900
Axle load with load at L1 rear		16 000	15 800	21 700	25 200	25 200	25 300	27 100
Axle load with load at L2 front	kg	94 000	92 500	99 700	106 800	106 800	108 300	107 500
Axle load with load at L2 rear		9 500	9 000	11 100	13 000	13 000	13 000	15 500
Axle load with load at L3 front	kg	78 300	77 800	84 100	89 500	89 500	90 900	99 100
Axle load with load at L3 rear		9 200	8 700	10 700	12 300	12 400	12 400	9 900
ELME Spreader 817 Innovation								
Total weight	kg	72 500	70 500	75 800	77 700	79 800	81 300	–
Axle load without front load		35 000	33 500	35 700	37 100	36 000	37 400	–
Axle load without front rear	kg	37 500	37 000	40 100	43 800	43 800	43 900	–
Axle load with load at L1 front	kg	101 500	99 700	99 100	99 600	99 600	101 000	–
Axle load with load at L1 rear		16 000	15 800	21 700	25 200	25 200	25 300	–
Axle load with load at L2 front	kg	94 000	92 500	99 700	106 800	106 800	108 300	–
Axle load with load at L2 rear		9 500	9 000	11 100	13 000	13 000	13 000	–
Axle load with load at L3 front	kg	78 300	77 800	84 100	89 500	89 500	90 900	–
Axle load with load at L3 rear		9 200	8 700	10 700	12 300	12 400	12 400	–

Model		SRSC45G5	SRSC45G5-P	SRSC45H9G5	SRSC4535G5	SRSC4535G5-S
Model extension			Intermodal spreader (Piggyback)	hybrid drive		Support jacks
Characteristics						
Manufacturer		SANY	SANY	SANY	SANY	SANY
Drive		Diesel	Diesel	Diesel	Diesel	Diesel
Load capacity / load	kg	45 000	45 000	45 000	45 000	45 000
Wheelbase	mm	6 000	6 000	6 000	6 500	6 500
Chassis						
Tires		Air	Air	Air	Air	Air
Tire size, front		18.00-25	18.00-25	18.00-25	18.00-33	18.00-33
Tire size, rear		18.00-25	18.00-25	18.00-25	18.00-33	18.00-33
Wheels, number front / rear		4 / 2	4 / 2	4 / 2	4 / 2	4 / 2
Power output						
Travel speed	without / with load	km/h	25 / 21	25 / 21	25 / 21	25 / 21
Lifting speed	without / with load	mm/s	460 / 260	460 / 260	460 / 260	420 / 220
Lowering speed	without / with load	mm/s	600 / 400	600 / 400	600 / 400	500 / 400
Gradeability	without / with load	%	46 / 28	42 / 26	46 / 28	43 / 26
Service brake		Wet multi-disc brake	Wet multi-disc brake	Wet multi-disc brake	Wet multi-disc brake	Wet multi-disc brake
Electric motor						
Motor manufacturer / typ		VOLVO TAD1181VE	VOLVO TAD1181VE	VOLVO TAD1181VE	VOLVO TAD1181VE	VOLVO TAD1181VE
Motor power according to ISO 14396	kW	265	265	265	265	265
Motor torque	Nm / rpm	1 785 / 1 400	1 785 / 1 400	1 785 / 1 400	1 785 / 1 400	1 785 / 1 400
Rated speed	rpm	2 100	2 100	2 100	2 100	2 100
Fuel consumption according to VDI cycle	l/h	12-22	12-22	10-20	12-22	12-22
Miscellaneous						
Transmission		TE30	TE30	TE30 with lock-up torque converter	TE30	TE30
Noise level inside the cab	dB	72	72	72	72	72
Noise level outside the cab	dB	107	107	107	107	107
Tank capacity	l	560	560	520	520	520
AdBlue tank	l	45	45	45	45	45

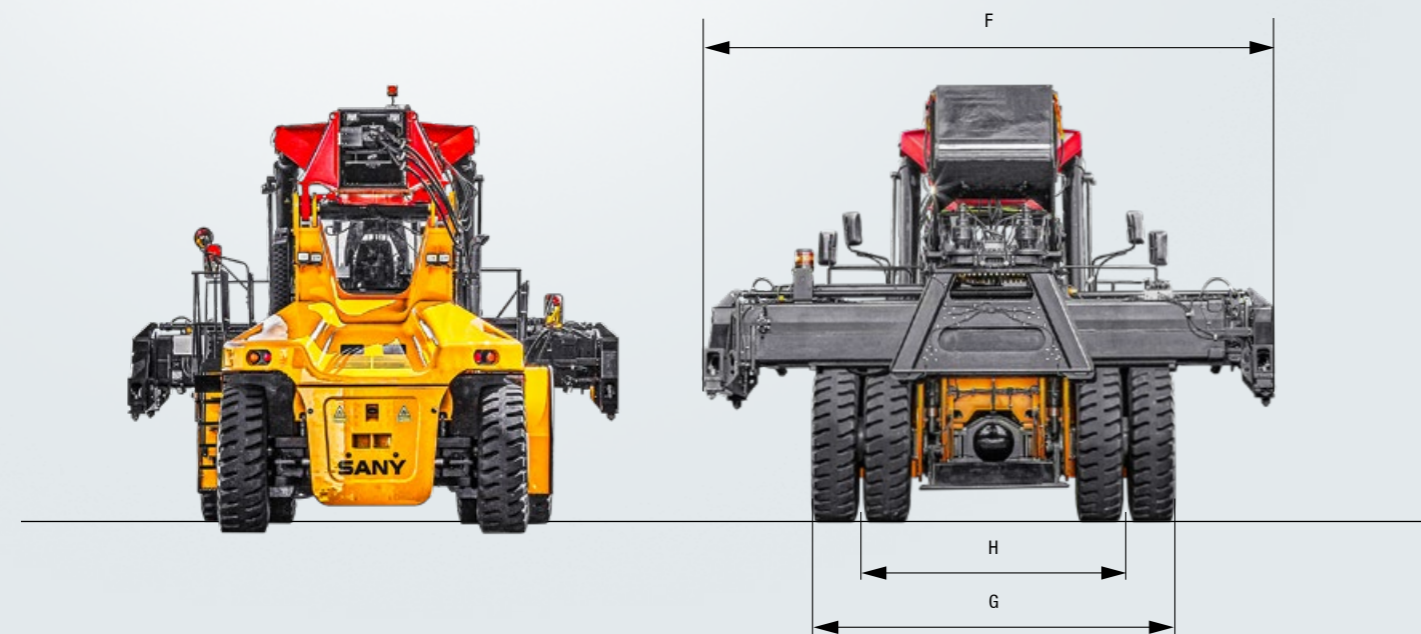
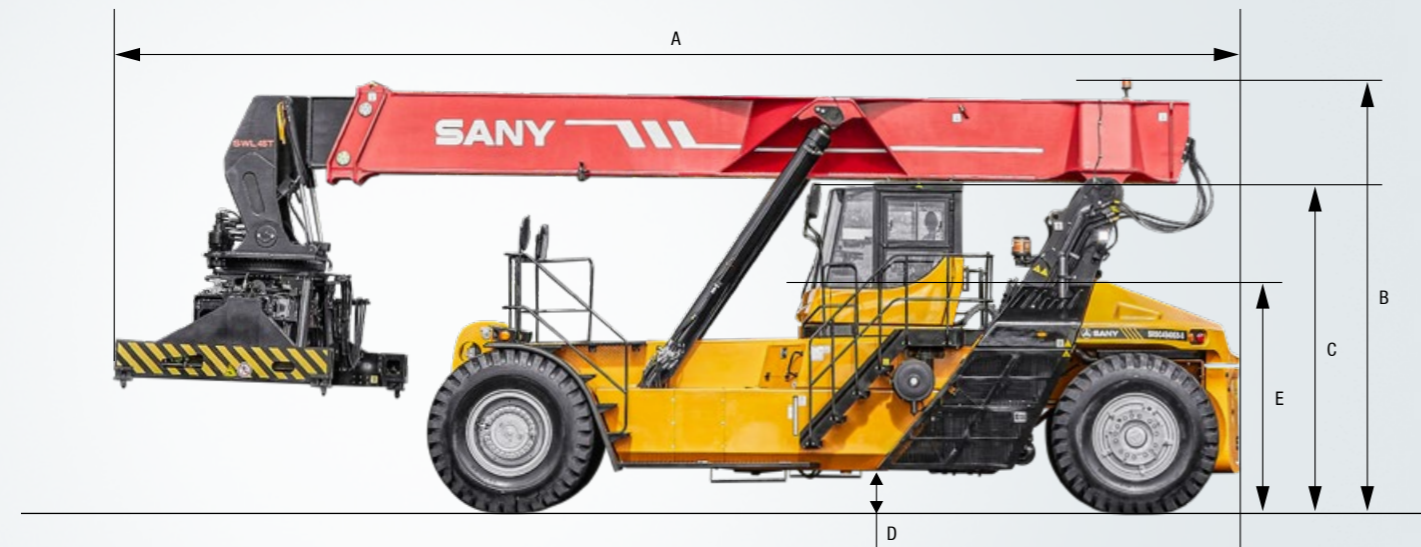
Model		SRSC4535G5-P	SRSC4535G5-SP	SRSC4540G5	SRSC4540G5-S	SRSC4540G5-P	SRSC4540G5-SP	SRSC4540G5-75
Model extension		Intermodal spreader (Piggyback)	Support jacks and intermodal spreader (Piggyback)		Support jacks	Intermodal-Spreader (Piggyback)	Support jacks and intermodal spreader (Piggyback)	7 500 mm wheelbase
Characteristics								
Manufacturer		SANY	SANY	SANY	SANY	SANY	SANY	SANY
Drive		Diesel	Diesel	Diesel	Diesel	Diesel	Diesel	Diesel
Load capacity / load		45 000	45 000	45 000	45 000	45 000	45 000	45 000
Wheelbase		6 500	6 500	7 000	7 000	7 000	7 000	7 500
Chassis								
Tires		Air	Air	Air	Air	Air	Air	Air
Tire size, front		18.00-33	18.00-33	18.00-33	18.00-33	18.00-33	18.00-33	18.00-33
Tire size, rear		18.00-33	18.00-33	18.00-33	18.00-33	18.00-33	18.00-33	18.00-33
Wheels, number front / rear		4 / 2	4 / 2	4 / 2	4 / 2	4 / 2	4 / 2	4 / 2
Power output								
Travel speed		25 / 21	25 / 21	25 / 21	25 / 21	25 / 21	25 / 21	25 / 21
Lifting speed		420 / 220	420 / 220	420 / 220	420 / 220	420 / 220	420 / 220	420 / 220
Lowering speed		500 / 400	500 / 400	500 / 400	500 / 400	500 / 400	500 / 400	500 / 400
Gradeability		40 / 24	39 / 24	41 / 25	40 / 25	38 / 23	38 / 23	38 / 23
Service brake		Wet multi-disc brake	Wet multi-disc brake	Wet multi-disc brake	Wet multi-disc brake	Wet multi-disc brake	Wet multi-disc brake	Wet multi-disc brake
Electric motor								
Motor manufacturer / typ		VOLVO TAD1181VE	VOLVO TAD1181VE	VOLVO TAD1181VE	VOLVO TAD1181VE	VOLVO TAD1181VE	VOLVO TAD1181VE	VOLVO TAD1181VE
Motor power according to ISO 14396		265	265	265	265	265	265	265
Motor torque		1 785 / 1 400	1 785 / 1 400	1 785 / 1 400	1 785 / 1 400	1 785 / 1 400	1 785 / 1 400	1 785 / 1 400
Rated speed		2 100	2 100	2 100	2 100	2 100	2 100	2 100
Fuel consumption according to VDI cycle		12-22	12-22	12-22	12-22	12-22	12-22	12-22
Miscellaneous								
Transmission		TE30	TE30	TE30	TE30	TE30	TE30	TE30
Noise level inside the cab		72	72	72	72	72	72	72
Noise level outside the cab		107	107	107	107	107	107	107
Tank capacity		520	520	520	520	520	520	520
AdBlue tank		45	45	45	45	45	45	45

TURNING RADIUS

Model		SRSC45G5 H9	SRSC4535G5	SRSC4540G5	SRSC4540G5-75
A Aisle width with 20' container	mm	11 300	11 600	12 000	12 800
B Aisle width with 40' container	mm	13 600	13 600	13 600	13 600
C Turning radius with 20' container	mm	8 100	8 600	9 100	9 700
D Outside turning radius with 40' container	mm	9 670	9 670	9 820	9 820
E Turning radius inside with 40' container	mm	3 830	3 830	3 700	3 700



Model		SRSC45G5 H9	SRSC4535G5	SRSC4540G5	SRSC4540G5-75
A Total length	mm	11 290	11 850	12 290	12 790
B Max. height	mm	4 900	5 350	5 350	5 350
C Transport height without boom	mm	3 750	3 850	3 850	3 850
D Ground clearance	mm	350	350	350	350
E Seat height	mm	2 504	2 606	2 606	2 606
F Overall width	mm	6 042 – 12 175	6 042 – 12 175	6 042 – 12 175	6 042 – 12 175
G Overall width front	mm	4 188	4 188	4 188	4 188
Overall width rear	mm	3 380	3 380	3 380	3 380
H Front track width	mm	3 033	3 033	3 033	3 033
Rear track width	mm	2 790	2 790	2 790	2 790

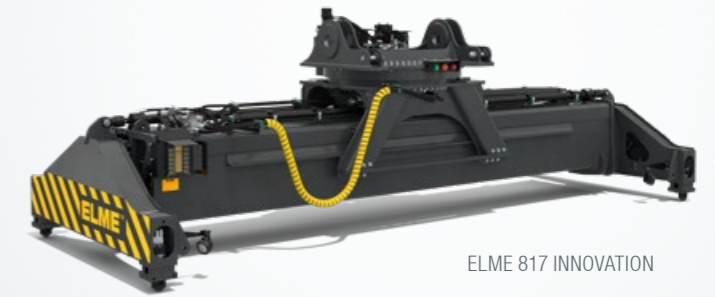


Spreader model		SANY SDJ450H9	SANY SDJ450G5	ELME 817 INN.	ELME 857 INN.
Lifting height max.	mm	15 100	15 100	15 250	14 700
Sideshift	mm	+/- 800	+/- 800	+/- 800	+/- 800
Rotation angle	°	+105 / -195	+105 / -195	+105 / -195	+105 / -195
Mechanical side level compensation	°	-2 / +2	-2 / +2	-2 / +2	-2 / +2
Boom tilt angle SRSC45G5	°	0 – 60	0 – 60	0 – 60	0 – 60
Boom tilt angle SRSC45H9G5	°	0 – 60	0 – 60	0 – 60	0 – 60
Boom tilt angle SRSC4535	°	0 – 58	0 – 58	0 – 58	0 – 58
Boom tilt angle SRSC4540	°	0 – 56,6	0 – 56,6	0 – 56,6	0 – 56,6

EFFICIENCY

If you have the choice, you have more options

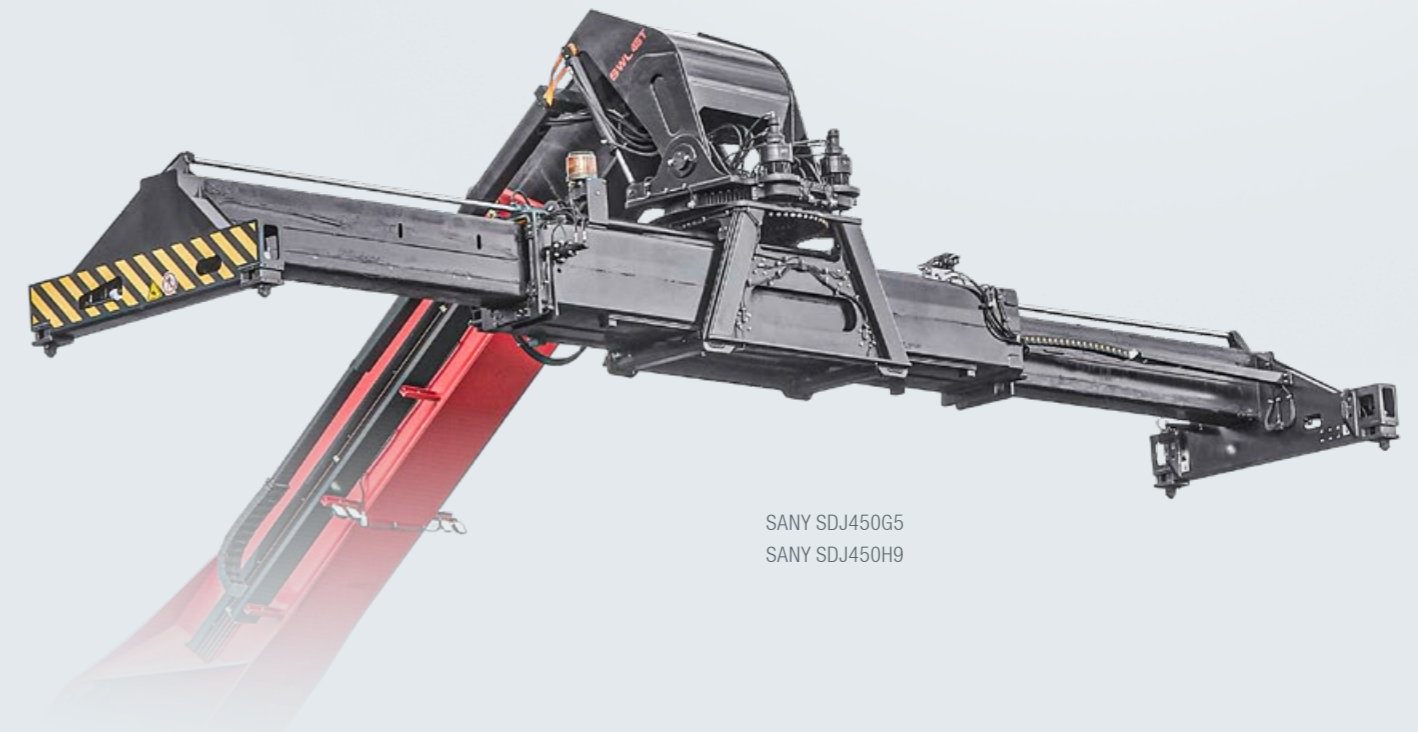
With SANY, you have the choice in the original equipment between the cost-efficient SANY spreader and the proven ELME Spreader. This allows you to tailor your SANY reachstacker even more precisely to your requirements - and to your budget.



ELME 817 INNOVATION

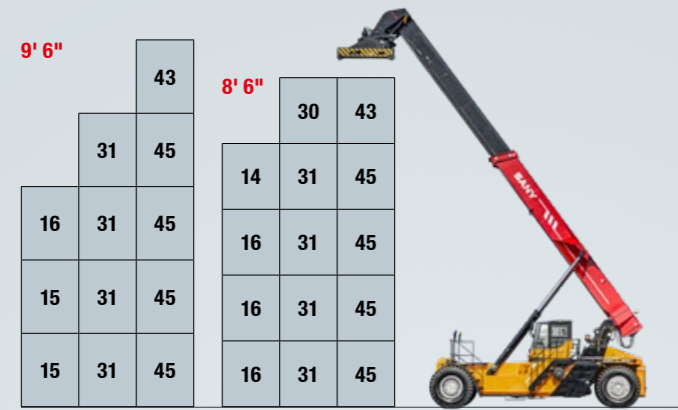


ELME 857 INNOVATION

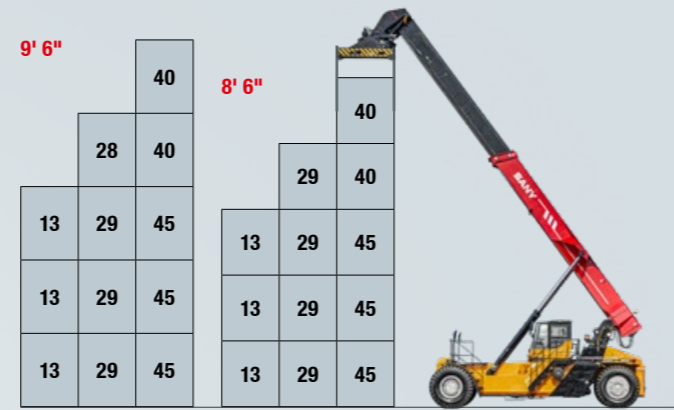


SANY SDJ450G5
SANY SDJ450H9

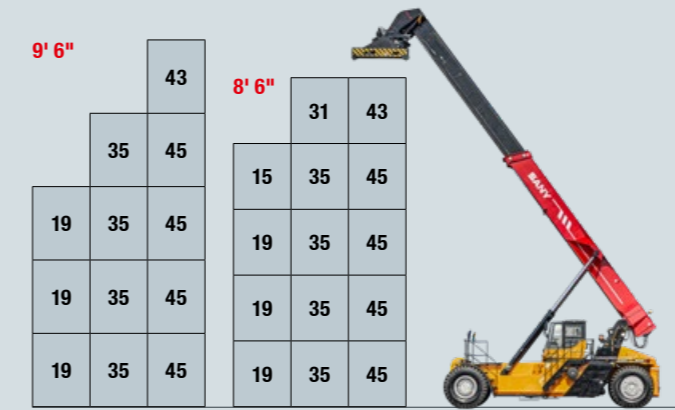
SRSC45G5



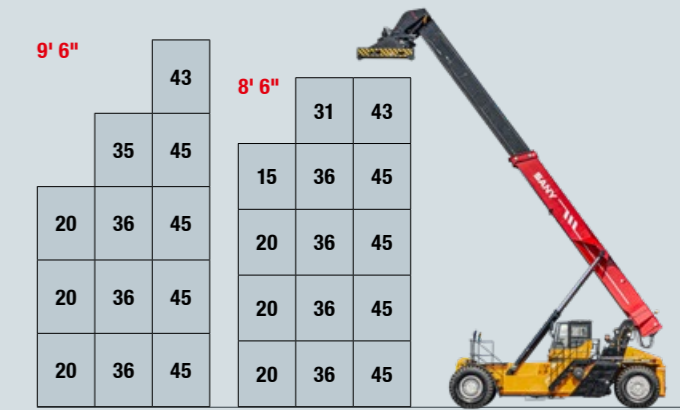
SRSC45G5-P



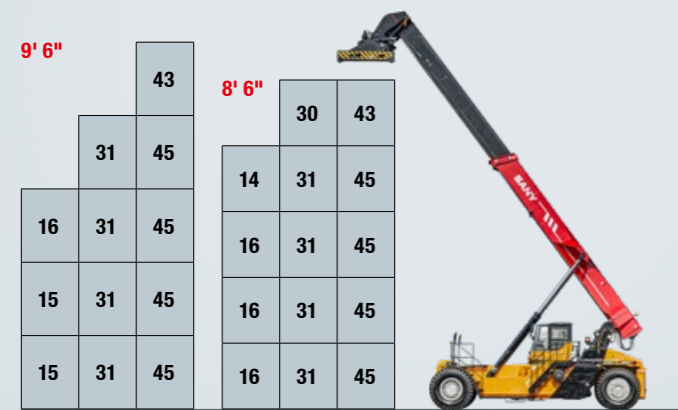
SRSC4535G5-S



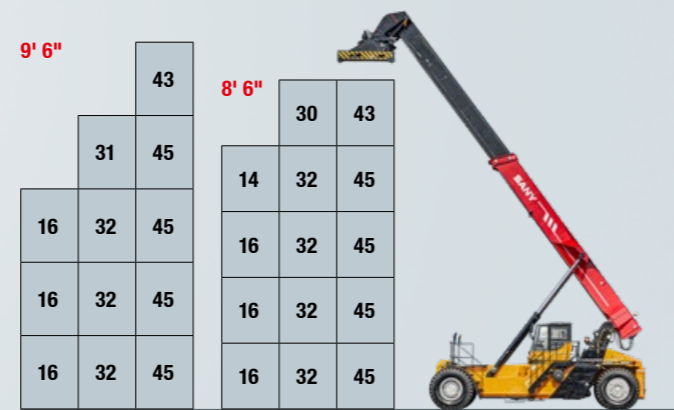
SRSC4535G5-S Counterweight extended



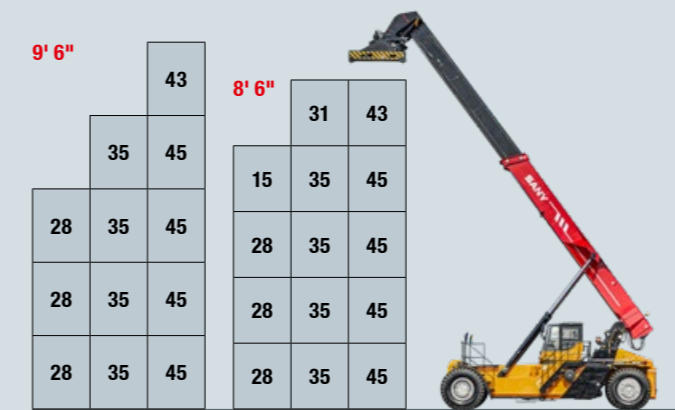
SRSC45H9G5



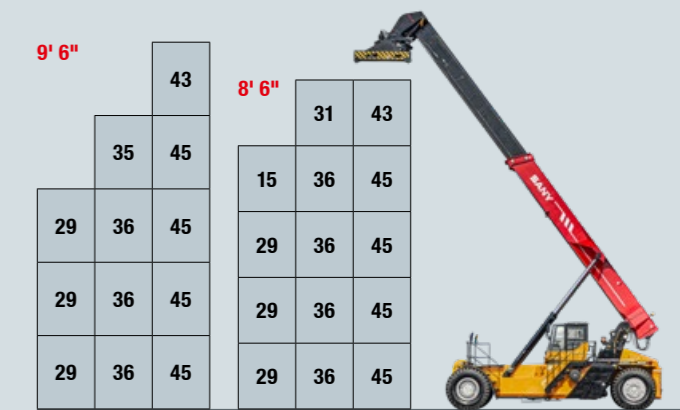
SRSC45H9G5 Counterweight extended



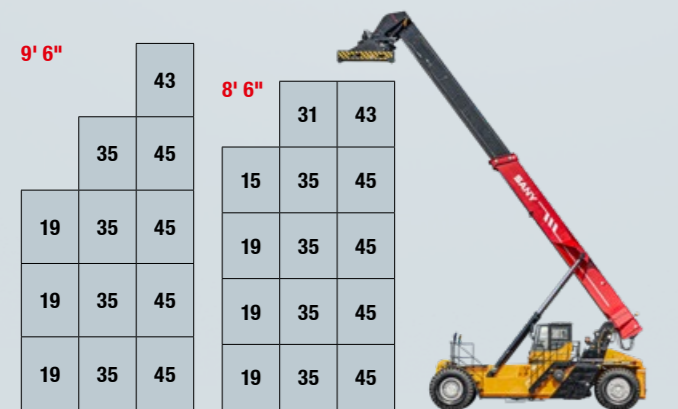
SRSC4535G5-S Lower support jack



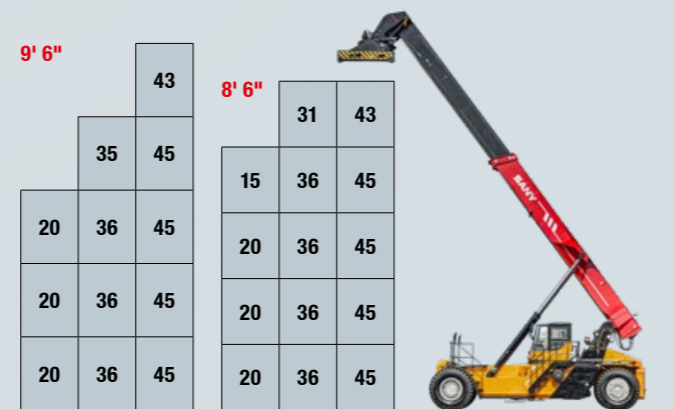
SRSC4535G5-S Support jack and counterweight extended



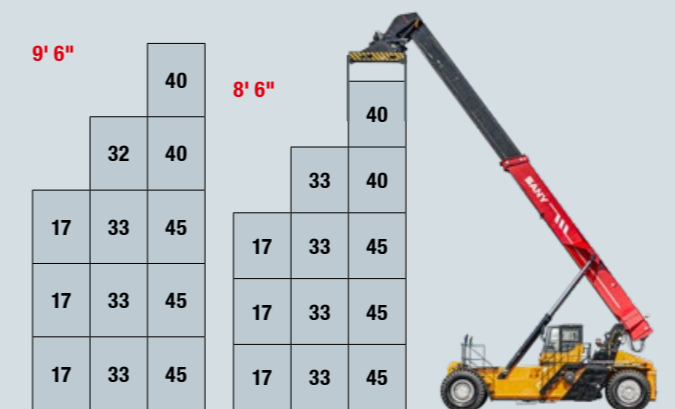
SRSC4535G5



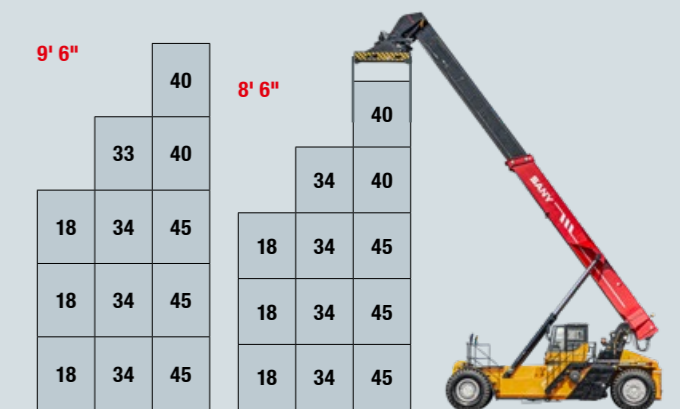
SRSC4535G5 Counterweight extended



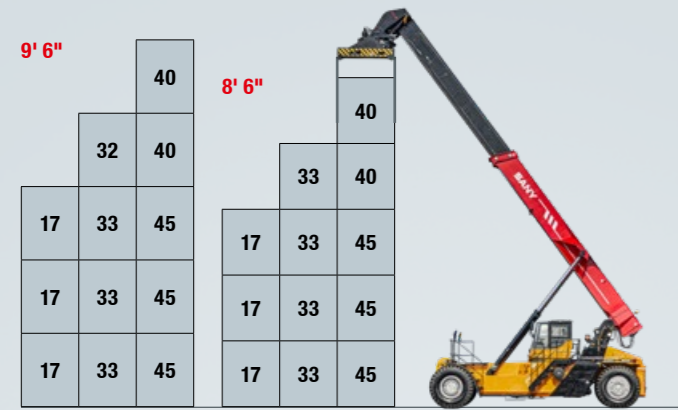
SRSC4535G5-P



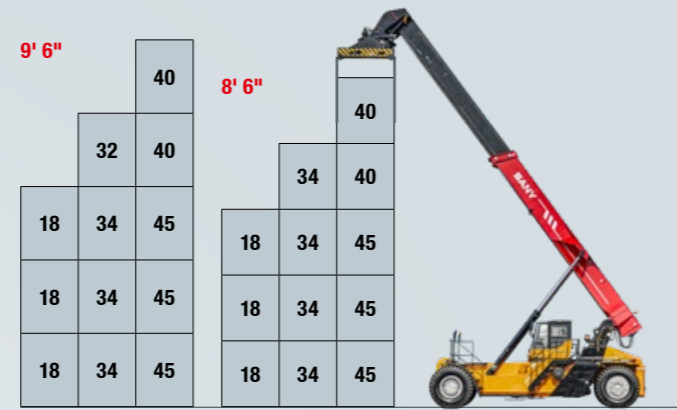
SRSC4535G5-P Counterweight extended



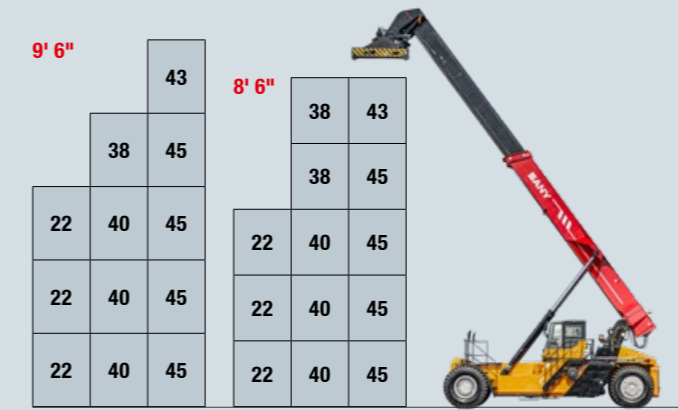
SRSC4535G5-SP



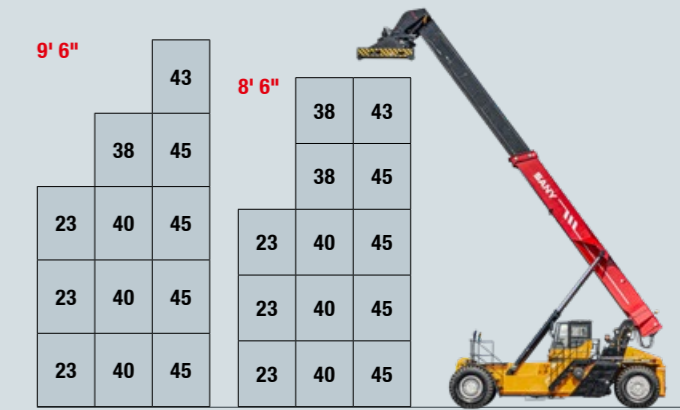
SRSC4535G5-SP Counterweight extended



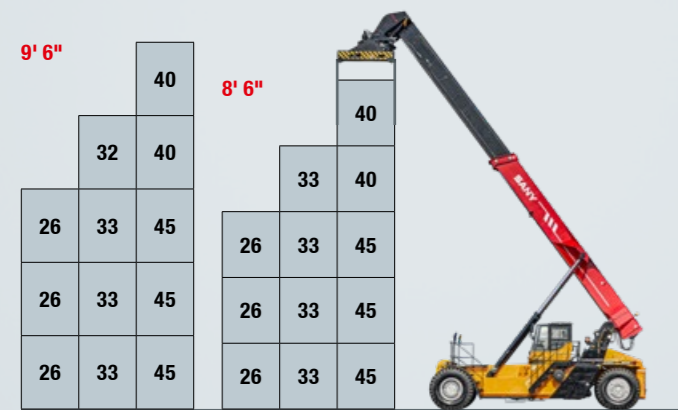
SRSC4540G5-S



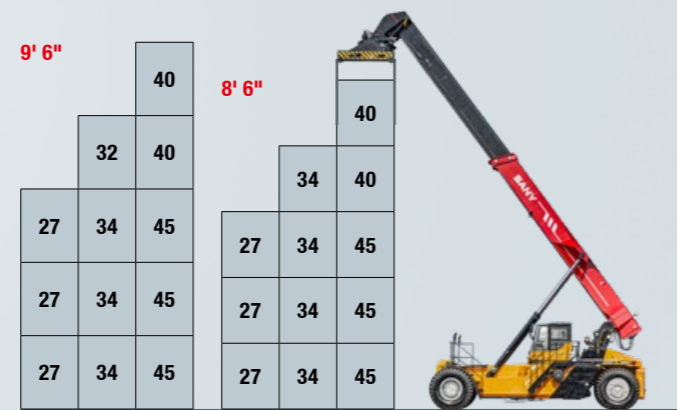
SRSC4540G5-S Counterweight extended



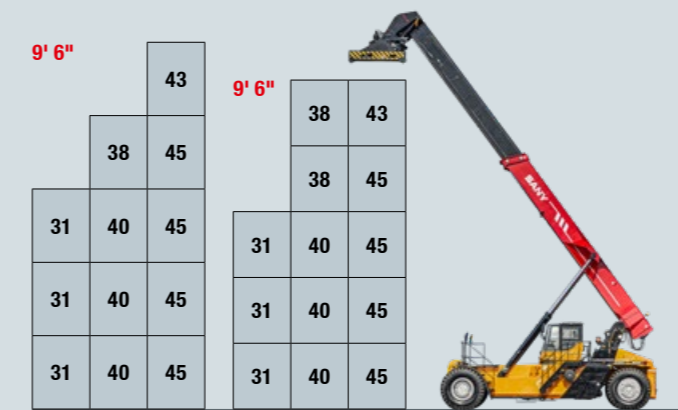
SRSC4535G5-SP Lower support jack



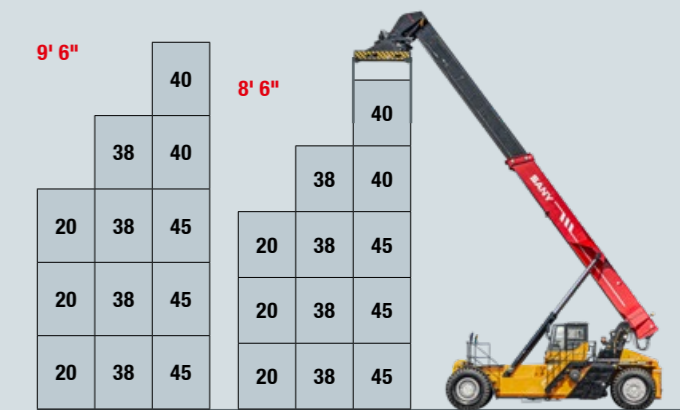
SRSC4535G5-SP Support jack and counterweight extended



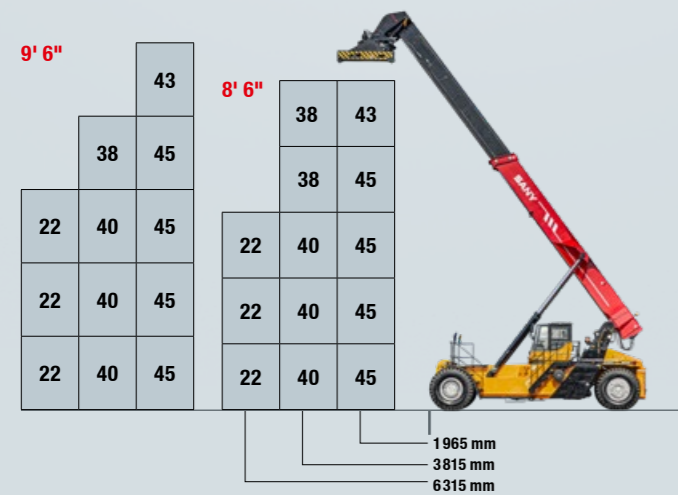
SRSC4540G5-S Lower support jack



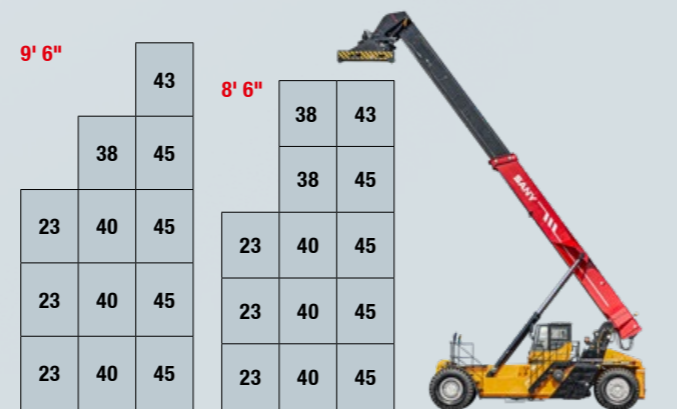
SRSC4540G5-P



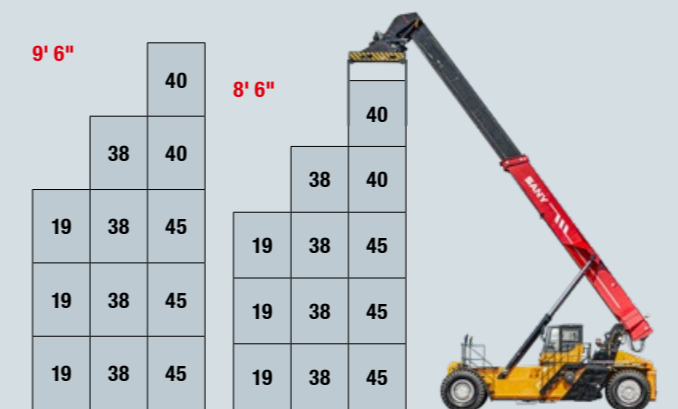
SRSC4540G5



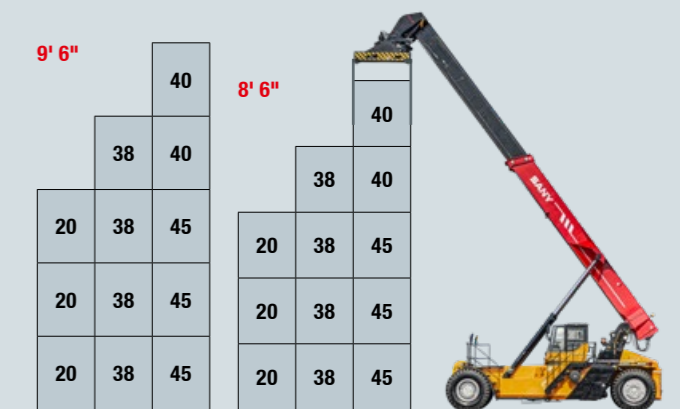
SRSC4540G5 Counterweight extended



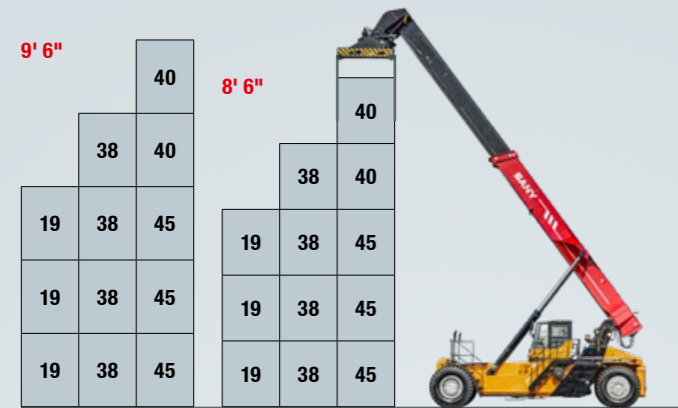
SRSC4540G5-P Counterweight extended



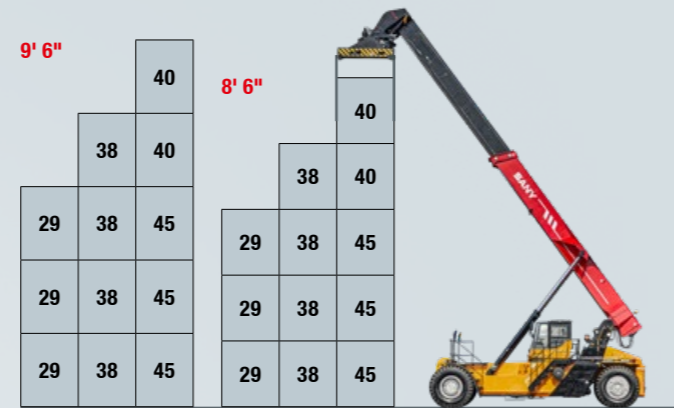
SRSC4540G5-SP



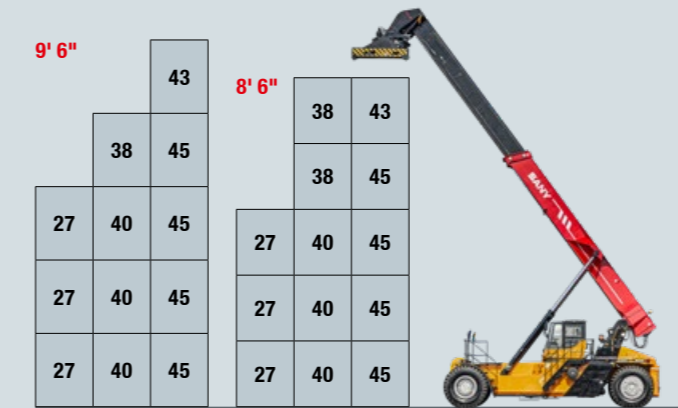
SRSC4540G5-SP Counterweight extended



SRSC4540G5-SP Lower support jack

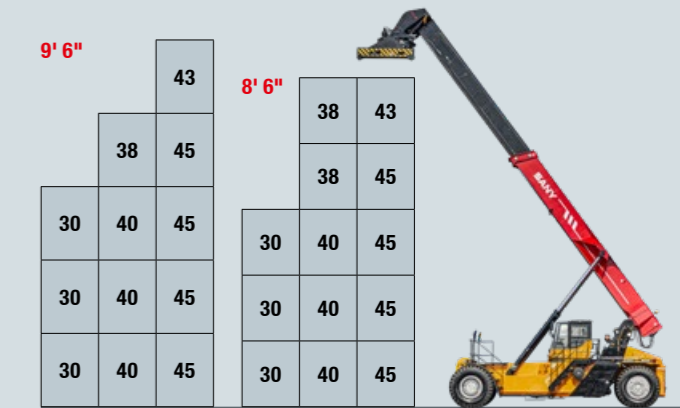


SRSC4540G5-75 Counterweight extended



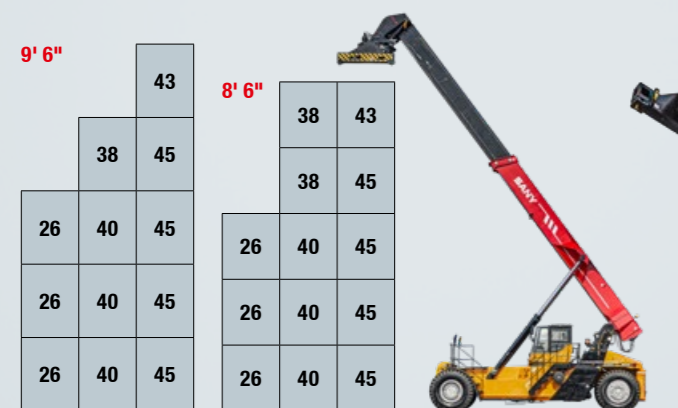
With spreader ELME 817 INN in 3rd row 2t less capacity

SRSC4540G5-75 Parking brake active



With spreader ELME 817 INN in 3rd row 2t less capacity

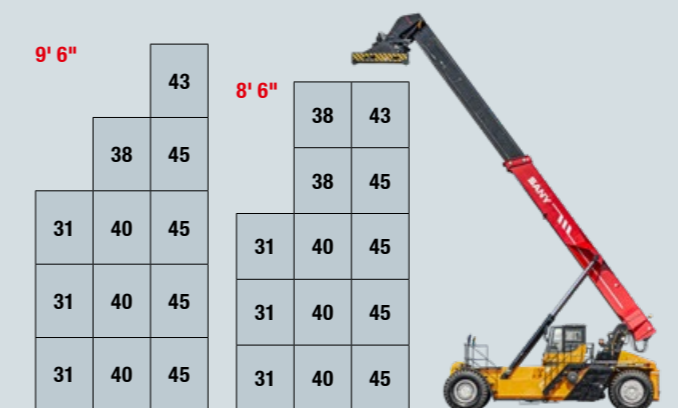
SRSC4540G5-75



With spreader ELME 817 INN in 3rd row 2t less capacity

1965 mm
3815 mm
6500 mm

SRSC4540G5-75 Counterweight extended / parking brake active



With spreader ELME 817 INN in 3rd row 2t less capacity



Model	SRSC45G5	SRSC45G5-P	SRSC45H9G5	SRSC4535G5	SRSC4535G5-S	SRSC4535G5-P	SRSC4535G5-SP	SRSC4540G5	SRSC4540G5-S	SRSC4540G5-P	SRSC4540G5-SP	SRSC4540G5-75
CABIN												
Grammer Actimo XL driver's seat, air suspension	●	●	●	●	●	●	●	●	●	●	●	●
Adjustable swivel steering column	●	●	●	●	●	●	●	●	●	●	●	●
Main display 7-inch with color display	●	●	●	●	●	●	●	●	●	●	●	●
Additional display for spreader 3.5-inch with color display	●	●	●	●	●	●	●	●	●	●	●	●
Rear view camera display 5-inch with color display	●	●	●	●	●	●	●	●	●	●	●	●
Fire extinguisher	●	●	●	●	●	●	●	●	●	●	●	●
Air conditioning	●	●	●	●	●	●	●	●	●	●	●	●
Sliding cab to a forward position with lock	●	●	●	●	●	●	●	●	●	●	●	●
Continuous power supply	●	●	●	●	●	●	●	●	●	●	●	●
Bracket for monitor	●	●	●	●	●	●	●	●	●	●	●	●
Tinted windows	●	●	●	●	●	●	●	●	●	●	●	●
Rear view mirrors with heating and electrical adjustment	●	●	●	●	●	●	●	●	●	●	●	●
Trainer seat	●	●	●	●	●	●	●	●	●	●	●	●
SAFETY												
Rear distance sensors, visual and acoustic output	●	●	●	●	●	●	●	●	●	●	●	●
Safety package in the spreader for twistlock monitoring and control, telescoping release with open twistlocks	●	●	●	●	●	●	●	●	●	●	●	●
Joystick control with CAN-Safety	●	●	●	●	●	●	●	●	●	●	●	●
Automatic parking brake	●	●	●	●	●	●	●	●	●	●	●	●
Automatically activated speed limits	●	●	●	●	●	●	●	●	●	●	●	●
360° camera system with multifunctional display	●	●	●	●	●	●	●	●	●	●	●	●
Reversing camera	●	●	●	●	●	●	●	●	●	●	●	●
Tire pressure monitoring	●	●	●	●	●	●	●	●	●	●	●	●
OTHER												
Support legs/support jack for 9 t additional lifting capacity	●	●	●	●	●	●	●	●	●	●	●	●
Movable rear weight for 1 t additional lifting capacity	●	●	●	●	●	●	●	●	●	●	●	●
Various pre-heater	●	●	●	●	●	●	●	●	●	●	●	●
Automatic central lubrication system	●	●	●	●	●	●	●	●	●	●	●	●
SPREADER												
SANY SDJ450H9 top lift for 20- and 40-foot ISO containers, with twistlock display	●	●	●	●	●	●	●	●	●	●	●	●
ELME 817 Innovation	●	—	●	●	●	—	—	●	●	—	—	—
ELME 857 Innovation	—	●	—	—	—	●	—	—	—	●	—	—
Soft landing	●	●	●	●	●	●	●	●	●	●	●	●
Power dampening, controlled via Joystick/CAN-bus	●	●	●	●	●	●	●	●	●	●	●	●
Automatic telescoping system	●	●	●	●	●	●	●	●	●	●	●	●
Pendulum damping cylinder	●	●	●	●	●	●	●	●	●	●	●	●
+/- 2° mechanical side slope compensation	●	●	●	●	●	●	●	●	●	●	●	●
-195°/+105° rotation angle, +/-30° rotation limitation with cab in front position	●	●	●	●	●	●	●	●	●	●	●	●
over-height legs	●	—	●	●	●	—	—	●	●	—	—	—
30-foot stops, power pile slope, 4-camera system, twistlock cameras	●	●	●	●	●	●	●	●	●	●	●	●
LIGHTING												
8 LED front headlights: low beam, high beam	●	●	●	●	●	●	●	●	●	●	●	●
4 LED worklights on the boom	●	●	●	●	●	●	●	●	●	●	●	●
2 LED worklights on the spreader	●	●	●	●	●	●	●	●	●	●	●	●
4 LED worklights for ambient lighting to the side and rear	●	●	●	●	●	●	●	●	●	●	●	●
LED rotating beacon, marker lights, brake light, rear lights, indicators	●	●	●	●	●	●	●	●	●	●	●	●
Further LED headlights, maintenance lamp, cab access light, reading light	●	●	●	●	●	●	●	●	●	●	●	●
ELECTRONICS												
Fully automatic powershift transmission with torque converter	●	●	●	●	●	●	●	●	●	●	●	●
Automatic engine stopp at idling speed, automatic engine speed adjustment	●	●	●	●	●	●	●	●	●	●	●	●
Multiple CAN bus systems, onboard diagnostics	●	●	●	●	●	●	●	●	●	●	●	●
Battery disconnect switch, safety devices for correct machine operation, seat contact switch, filter clogging indicator	●	●	●	●	●	●	●	●	●	●	●	●

Standard equipment ● Special option ● not available —

Not all products are available on all markets. As part of our continuous improvement process, we reserve the right to change specifications and designs without prior notice. The illustrations may contain additional options. This is only a brief excerpt - if you require further options or information, please reach out to your dealer.

SANY

Quality Changes the World

SANY EUROPE GmbH

Sany Allee 1
D-50181 Bedburg, Germany
fon +49 2272 90531 100
fax +49 2272 90531 109
info@sanyeurope.com
www.sanyeurope.com

